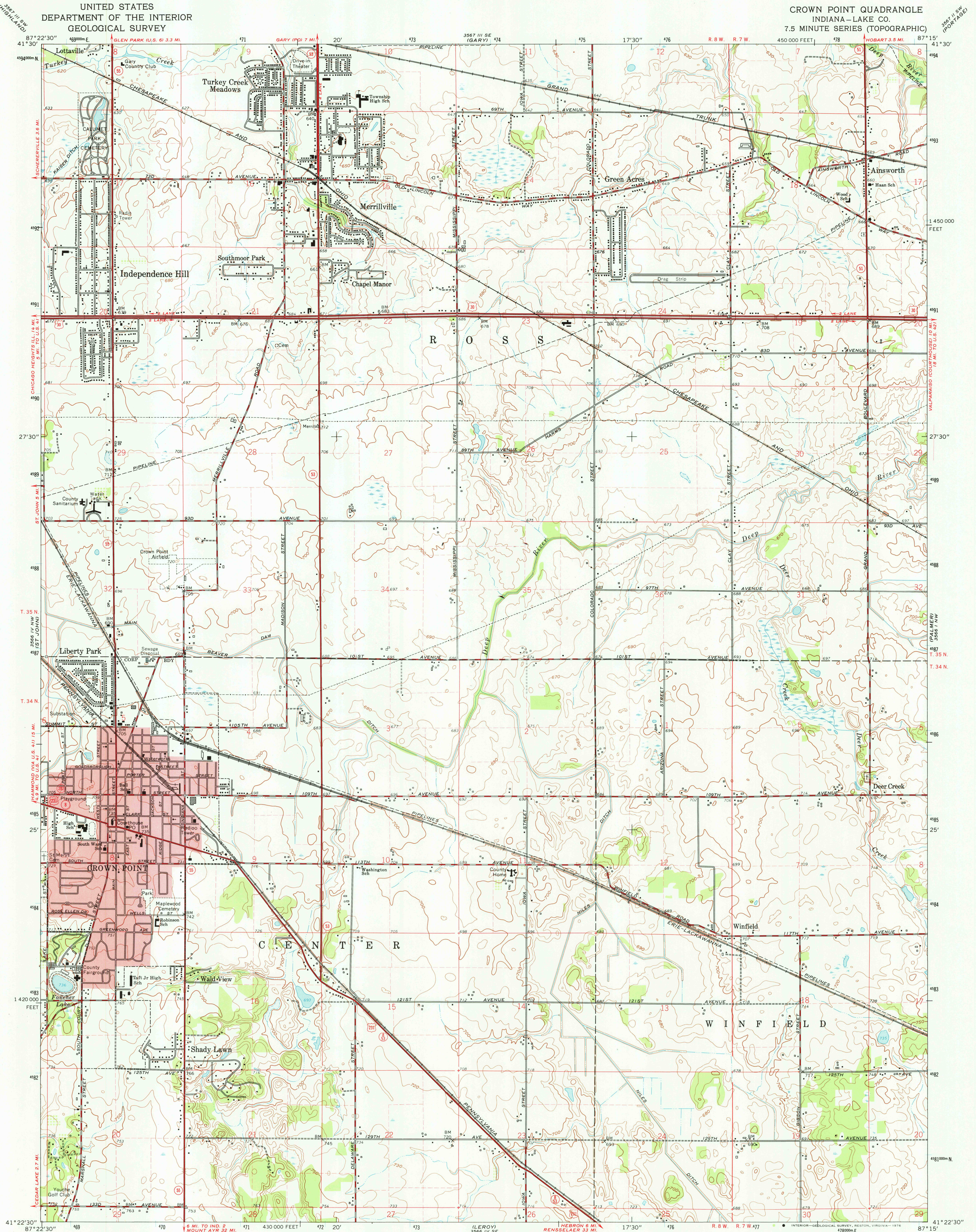
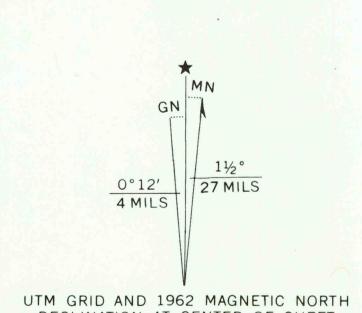


UNITED STATES  
DEPARTMENT OF THE INTERIOR  
GEOLOGICAL SURVEY

CROWN POINT QUADRANGLE  
INDIANA-LAKE CO.  
7.5 MINUTE SERIES (TOPOGRAPHIC)



Maped, edited, and published by the Geological Survey  
Revised in cooperation with State of Indiana  
Department of Conservation  
Control by USGS and USC&GS  
Planimetry by photogrammetric methods from aerial photographs  
taken 1952. Topography by planimetric surveys 1953. Revised 1962  
Polyconic projection. 1927 North American datum  
100,000-foot grid based on Indiana coordinate system, west zone  
1000-metre Universal Transverse Mercator grid ticks,  
zone 16, shown in blue  
Fine red dashed lines indicate selected fence and field lines where  
generally visible on aerial photographs. This information is unchecked  
Red tint indicates area in which only landmark buildings are shown



THIS MAP COMPLIES WITH NATIONAL MAP ACCURACY STANDARDS  
FOR SALE BY U.S. GEOLOGICAL SURVEY, RESTON, VIRGINIA 22092  
AND INDIANA DEPARTMENT OF NATURAL RESOURCES, INDIANAPOLIS, INDIANA 46204  
A FOLDER DESCRIBING TOPOGRAPHIC MAPS AND SYMBOLS IS AVAILABLE ON REQUEST

ROAD CLASSIFICATION  
Heavy-duty ——— Light-duty ———  
Medium-duty ——— Unimproved dirt ———  
U.S. Route ——— State Route ———  
USGS  
Historical File  
Topographic Division  
CROWN POINT, IND.  
N4122.5-W8715/7.5  
1962  
AMS 3566 IV NE-SERIES V851

JUN 16 1975