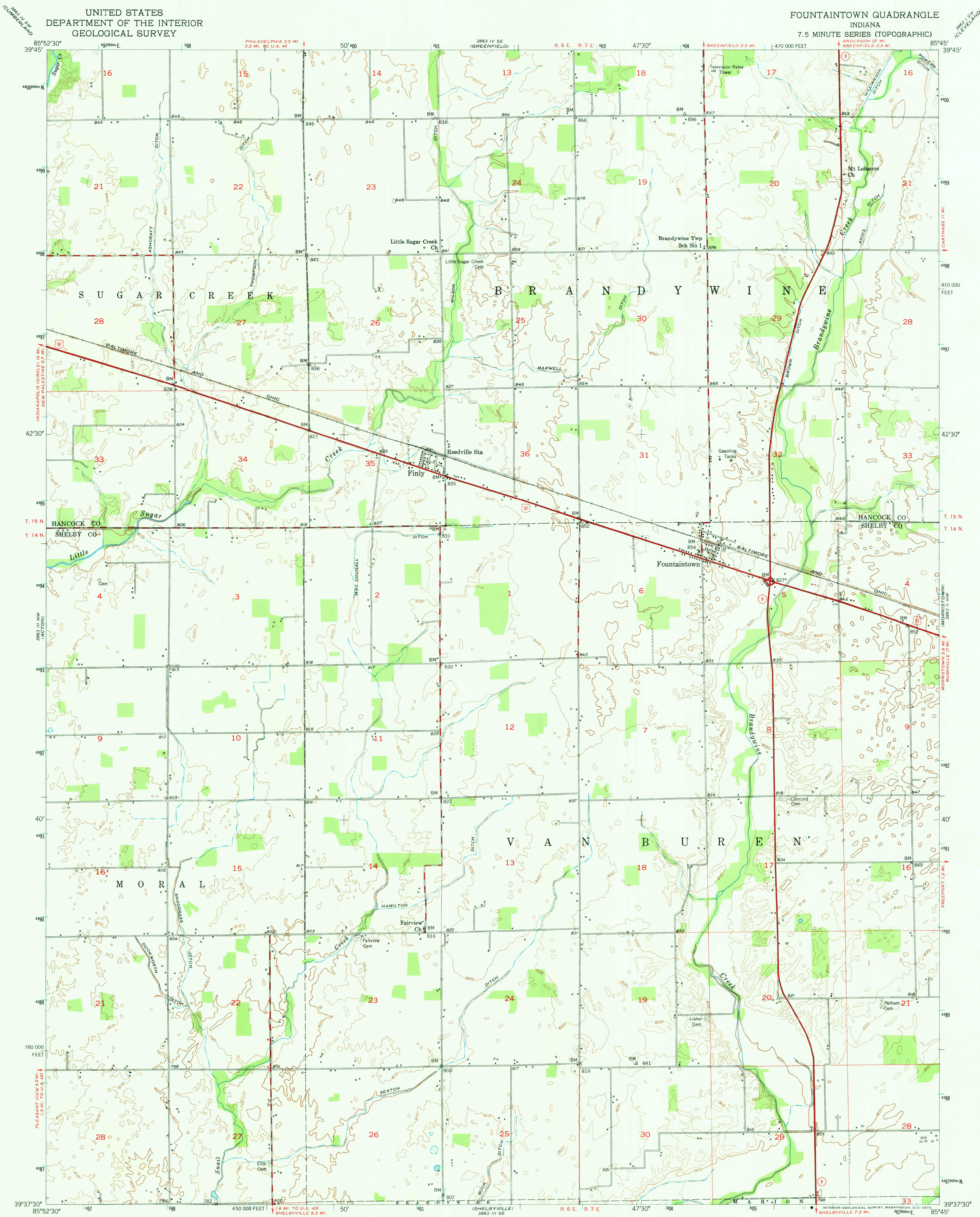


UNITED STATES  
DEPARTMENT OF THE INTERIOR  
GEOLOGICAL SURVEY

FOUNTAINTOWN QUADRANGLE  
INDIANA  
7.5 MINUTE SERIES (TOPOGRAPHIC)



Maped, edited, and published by the Geological Survey

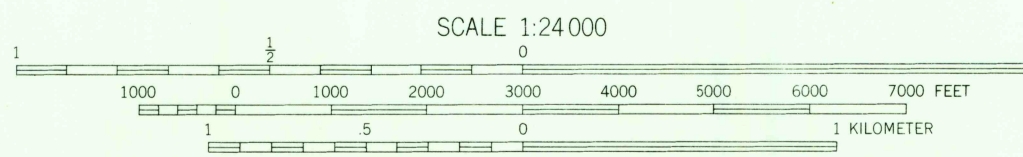
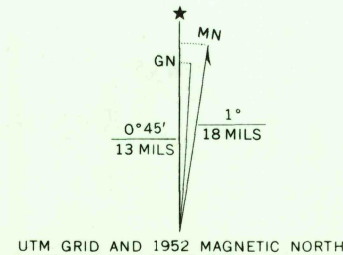
Control by USGS and USC&GS

Culture and drainage in part compiled from aerial photographs taken 1949. Topography by plane-table surveys 1952

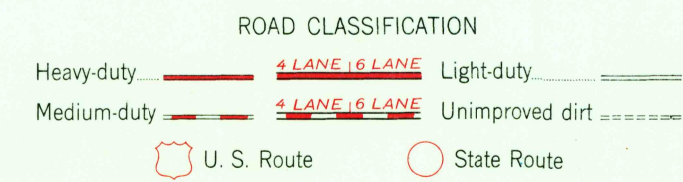
Polyconic projection, 1927 North American datum

10,000-foot grid based on Indiana coordinate system, east zone

1000-meter Universal Transverse Mercator grid ticks, zone 16, shown in blue



CONTOUR INTERVAL 10 FEET  
DATUM IS MEAN SEA LEVEL



FOUNTAINTOWN, IND.  
N3937.5-W8545/7.5

1952

AMS 3863 III NE-SERIES W851

THIS MAP COMPLIES WITH NATIONAL MAP ACCURACY STANDARDS  
FOR SALE BY U. S. GEOLOGICAL SURVEY, WASHINGTON, D. C. 20242  
AND INDIANA DEPARTMENT OF NATURAL RESOURCES, INDIANAPOLIS, INDIANA 46204  
A FOLDER DESCRIBING TOPOGRAPHIC MAPS AND SYMBOLS IS AVAILABLE ON REQUEST

MAY 1 1973

1575