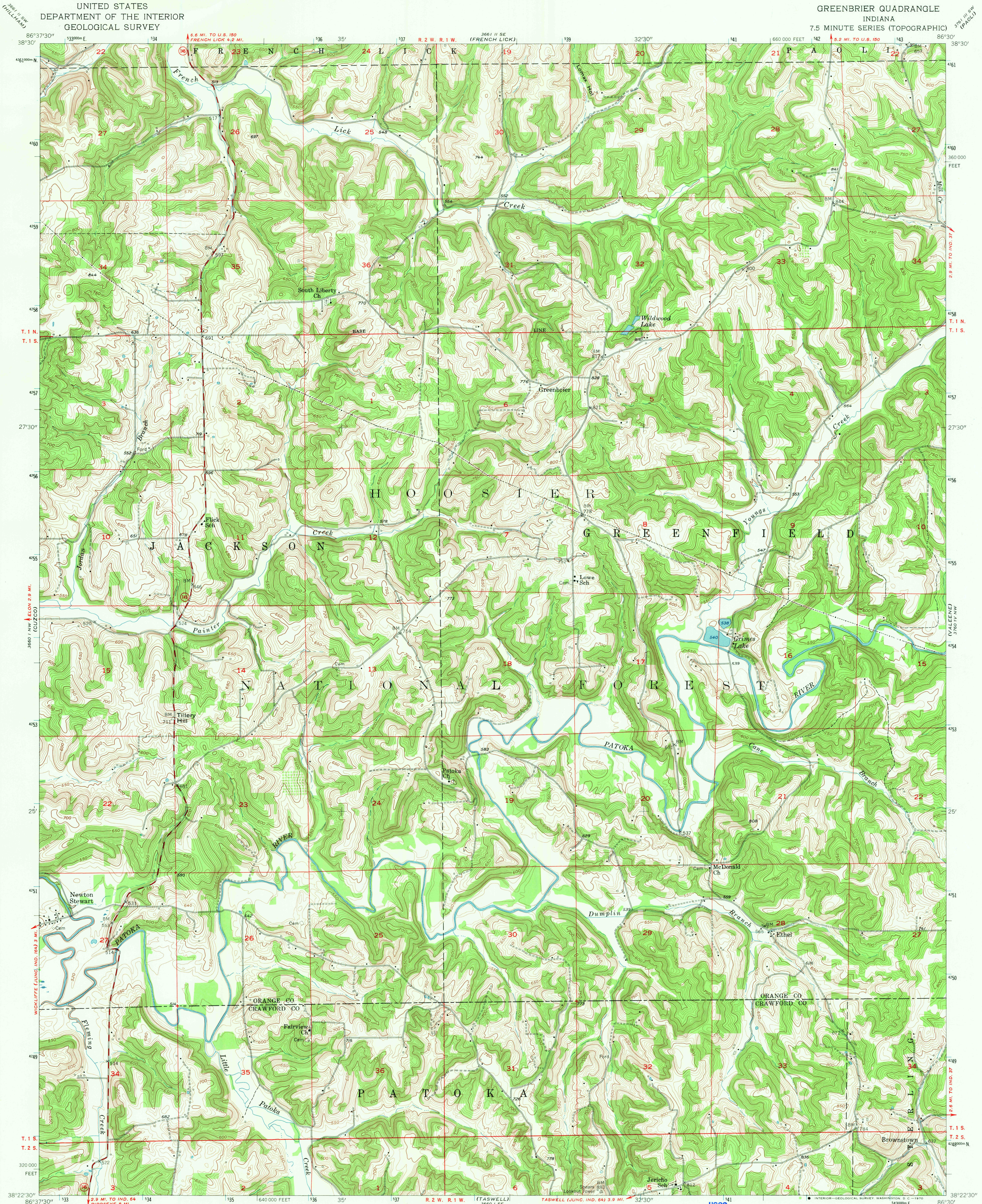


UNITED STATES
DEPARTMENT OF THE INTERIOR
GEOLOGICAL SURVEY

GREENBRIER QUADRANGLE
INDIANA
7.5 MINUTE SERIES (TOPOGRAPHIC)



Mapped, edited, and published by the Geological Survey
Control by USGS and USC&GS
Topography from aerial photographs by photogrammetric methods
and by planetable surveys 1956. Aerial photographs taken 1947
Polyconic projection. 1927 North American datum
10,000-foot grid based on Indiana coordinate system,
west zone
1000-meter Universal Transverse Mercator grid ticks,
zone 16, shown in blue
Entire area lies within Hoosier National Forest

UTM GRID AND 1956 MAGNETIC NORTH
DECLINATION AT CENTER OF SHEET

SCALE 1:24,000
1 0 1000 2000 3000 4000 5000 6000 7000 FEET
1 0 5 10 KILOMETER
CONTOUR INTERVAL 10 FEET
DATUM IS MEAN SEA LEVEL

USGS
Historical File
Topographic Division

ROAD CLASSIFICATION
Medium-duty ——— Light-duty ———
Unimproved dirt ———
State Route



U.S.G.S.
FILE COPY
TOPOGRAPHIC DIVISION

GREENBRIER, IND.
N 3822.5 - W 8630.7/7.5
1956
AMS 3560 1 NE-SERIES V851

AUG 25 1970