

U. S. G. S.
FILE COPY
Inspection and Editing.

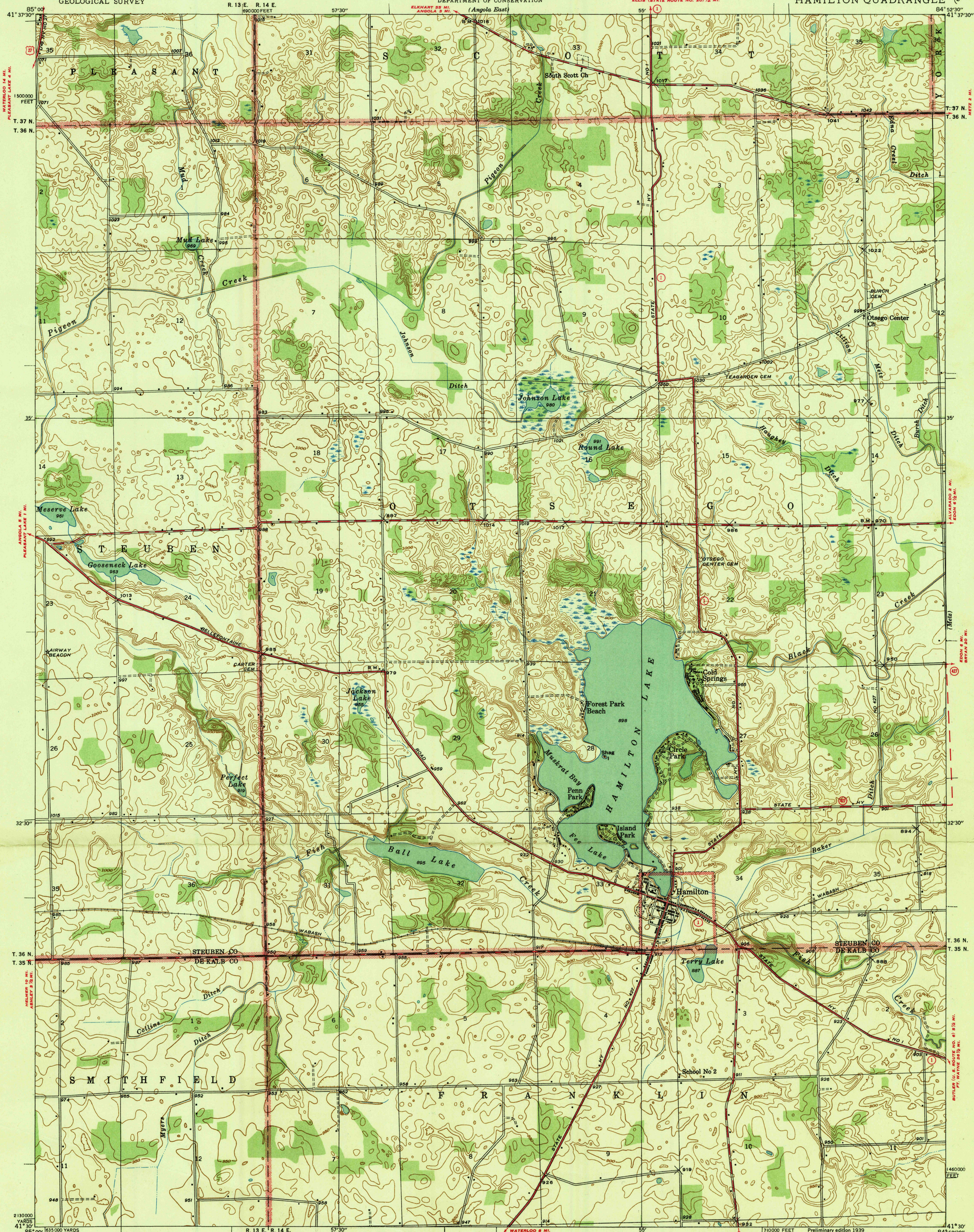
COLDWATER 23 MI.
ANGOLA 9 1/2 MI.

UNITED STATES
DEPARTMENT OF THE INTERIOR
GEOLOGICAL SURVEY

STATE OF INDIANA
DEPARTMENT OF CONSERVATION

INDIANA
HAMILTON QUADRANGLE

(Clear Lake)



Albert Pike, Division Engineer
Topography by A. G. England and Shirley Waggener
Surveyed in 1938

1°
TRUE NORTH
MAGNETIC NORTH
APPROXIMATE MEAN
DECLINATION, 1938

Scale: 24000
1 inch = 2 miles
1 centimeter = 2 kilometers
Scale: 24000
1 inch = 2 miles
1 centimeter = 2 kilometers

Contour interval 10 feet
Datum is mean sea level

ROUTES USUALLY TRAVELED
HARD IMPROVED SURFACES
OTHER SURFACE IMPROVEMENTS
U. S. ROUTE
STATE ROUTE

USGS
Historical File
Topographic Division

Polyconic projection. 1927 North American datum
5000 yard grid based on U. S. zone system, B
10000 foot grid based on Indiana (East)
rectangular coordinate system

HAMILTON, IND.

FEB 9 - 1940