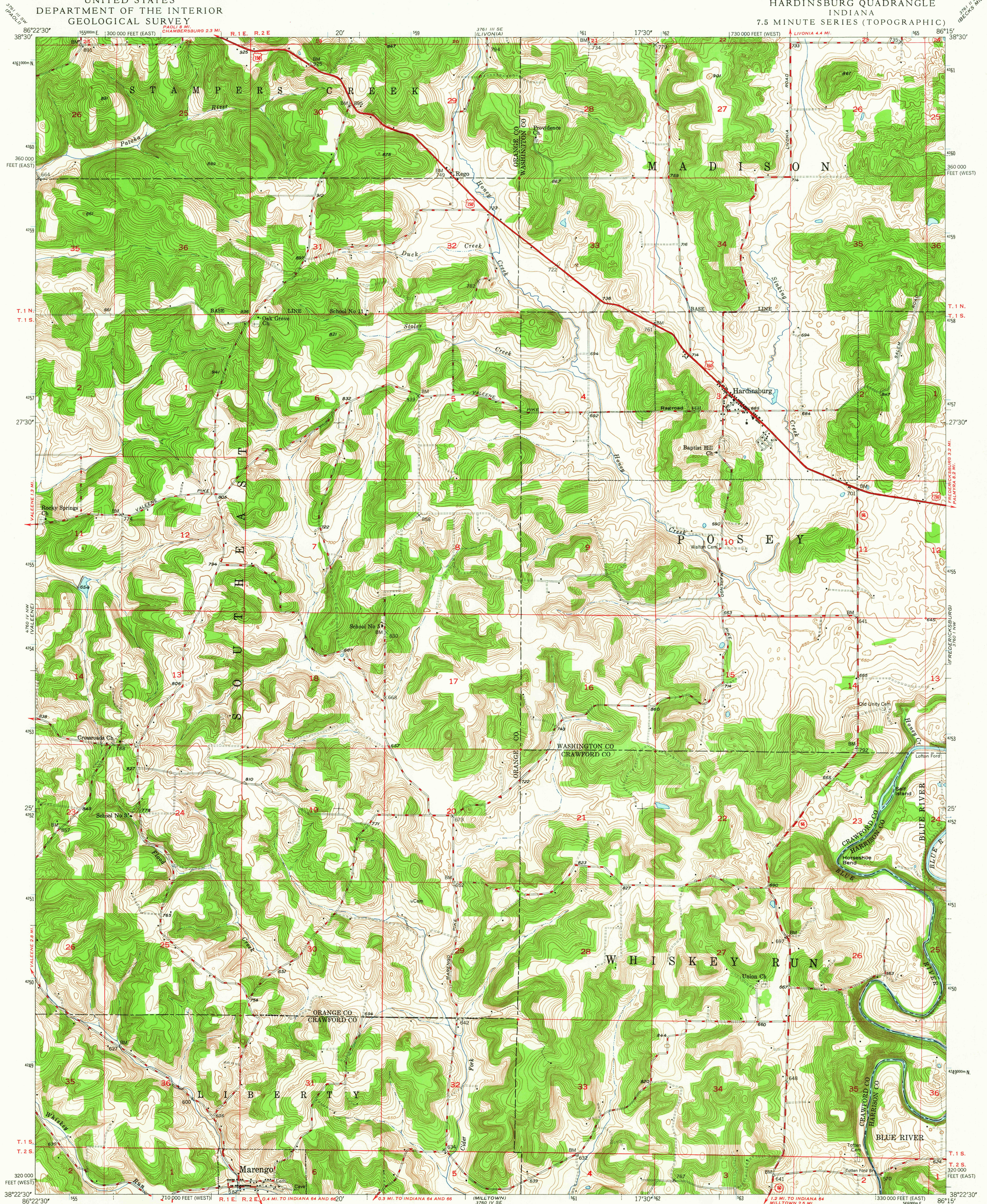


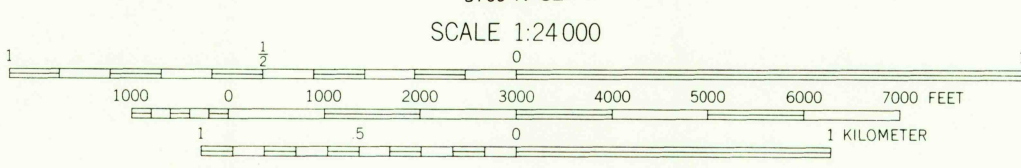
UNITED STATES
DEPARTMENT OF THE INTERIOR
GEOLOGICAL SURVEY

HARDINSBURG QUADRANGLE
INDIANA
7.5 MINUTE SERIES (TOPOGRAPHIC)



Mapped, edited, and published by the Geological Survey
Control by USGS and USCGS
Culture and drainage in part compiled from
aerial photographs taken 1938 and 1940
Topography by plane-table methods 1947
Polyconic projection. 1927 North American datum
10,000-foot grids based on Indiana coordinate system,
east and west zones
1000-meter Universal Transverse Mercator grid ticks,
zone 16, shown in blue

UTM GRID AND 1947 MAGNETIC NORTH
DECLINATION AT CENTER OF SHEET



USGS
Historical File
Topographic Division

ROAD CLASSIFICATION
HARD-SURFACE ALL WEATHER ROADS DRY WEATHER ROADS
Heavy-duty... **LANE LANE** Improved dirt...
Medium-duty... **LANE LANE** Unimproved dirt...
Loose-surface, graded, or narrow hard-surface...
U. S. Route State Route

THIS MAP COMPLIES WITH NATIONAL MAP ACCURACY STANDARDS
FOR SALE BY U. S. GEOLOGICAL SURVEY, WASHINGTON, D. C. 20542
AND INDIANA DEPARTMENT OF CONSERVATION, INDIANAPOLIS, INDIANA
A FOLDER DESCRIBING TOPOGRAPHIC MAPS AND SYMBOLS IS AVAILABLE ON REQUEST

U.S.G.S.
FILE COPY
TOPOGRAPHIC DIVISION

HARDINSBURG, IND.
N3822.5-W8615.7.5
1947
AMS 3760 IV NE-SERIES V851

NOV 23 1965
2210