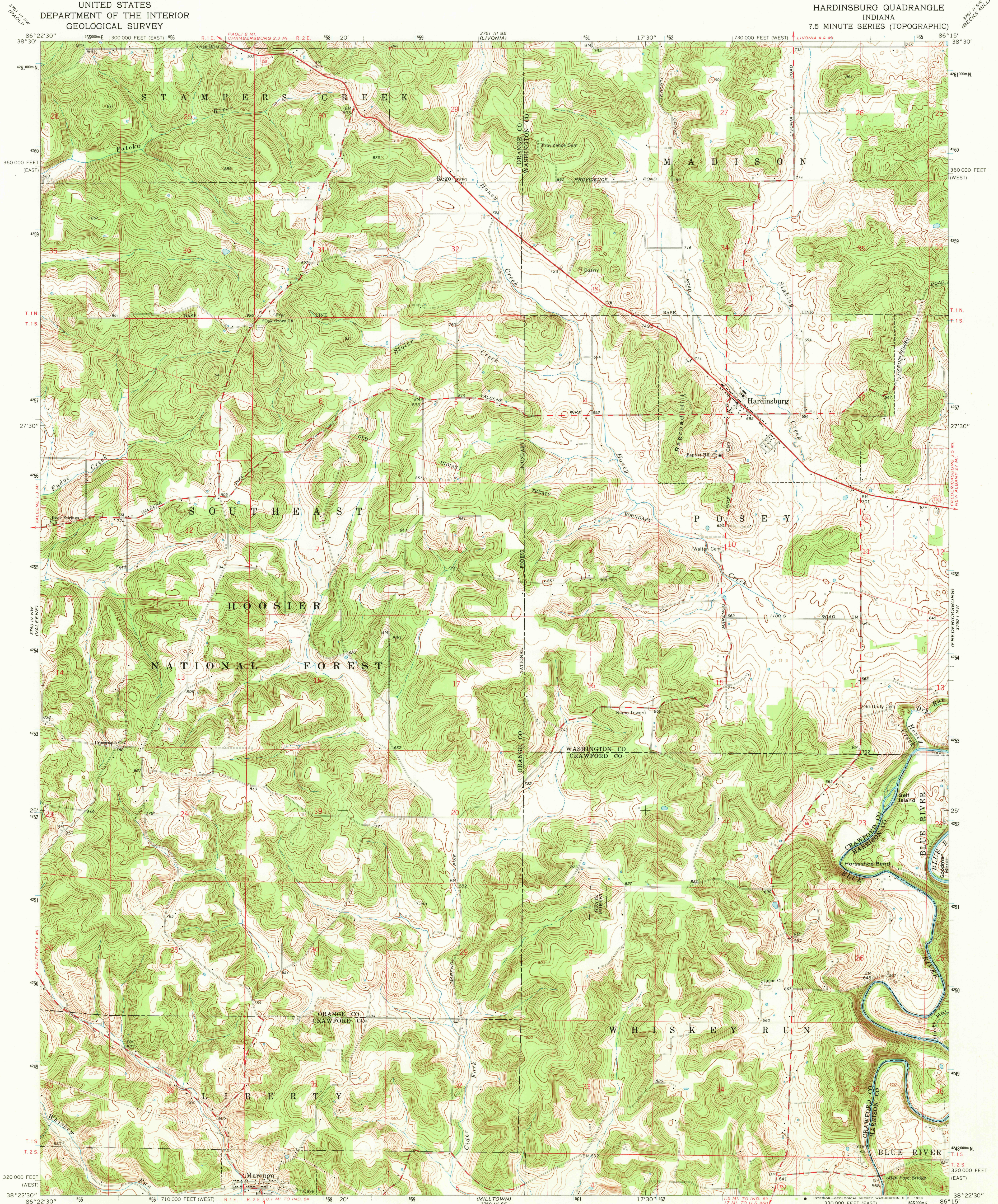
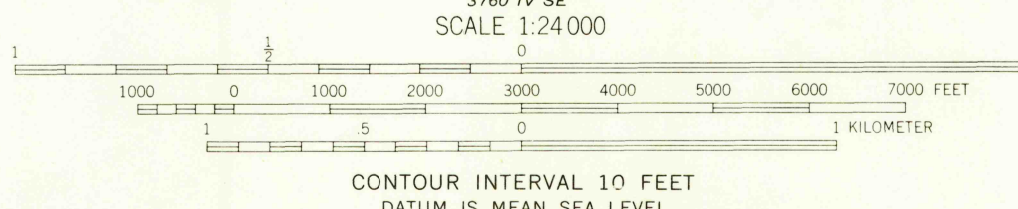


UNITED STATES
DEPARTMENT OF THE INTERIOR
GEOLOGICAL SURVEY

HARDINSBURG QUADRANGLE
INDIANA
7.5 MINUTE SERIES (TOPOGRAPHIC)



Mapped, edited, and published by the Geological Survey
Revised in cooperation with Indiana Department
of Natural Resources
Control by USGS, USC&GS, and Indiana Flood Control and Water
Resources Commission
Planimetry by photogrammetric methods from aerial photographs
taken 1938 and 1940. Topography by planetable surveys 1947
Revised 1966
Polyconic projection. 1927 North American datum
10,000-foot grid based on Indiana coordinate system,
west and east zones
1000-meter Universal Transverse Mercator grid ticks, zone 16,
shown in blue
Fine red dashed lines indicate selected fence and field lines where
generally visible on aerial photographs. This information is unchecked



USGS
Historical File
Topographic Division



U.S.G.S.
FILE COPY
TOPOGRAPHIC DIVISION

ROAD CLASSIFICATION
Heavy-duty ——— Light-duty ———
Medium-duty ——— Unimproved dirt ———
U.S. Route ——— State Route ———

HARDINSBURG, IND.
N 3822.5-W 8615.7.5
1966
AMS 3760 IV NE-SERIES V851

THIS MAP COMPLIES WITH NATIONAL MAP ACCURACY STANDARDS
FOR SALE BY U.S. GEOLOGICAL SURVEY, WASHINGTON, D. C. 20242
AND INDIANA DEPARTMENT OF NATURAL RESOURCES, INDIANAPOLIS, INDIANA 46204
A FOLDER DESCRIBING TOPOGRAPHIC MAPS AND SYMBOLS IS AVAILABLE ON REQUEST

2600
JAN 23 1969