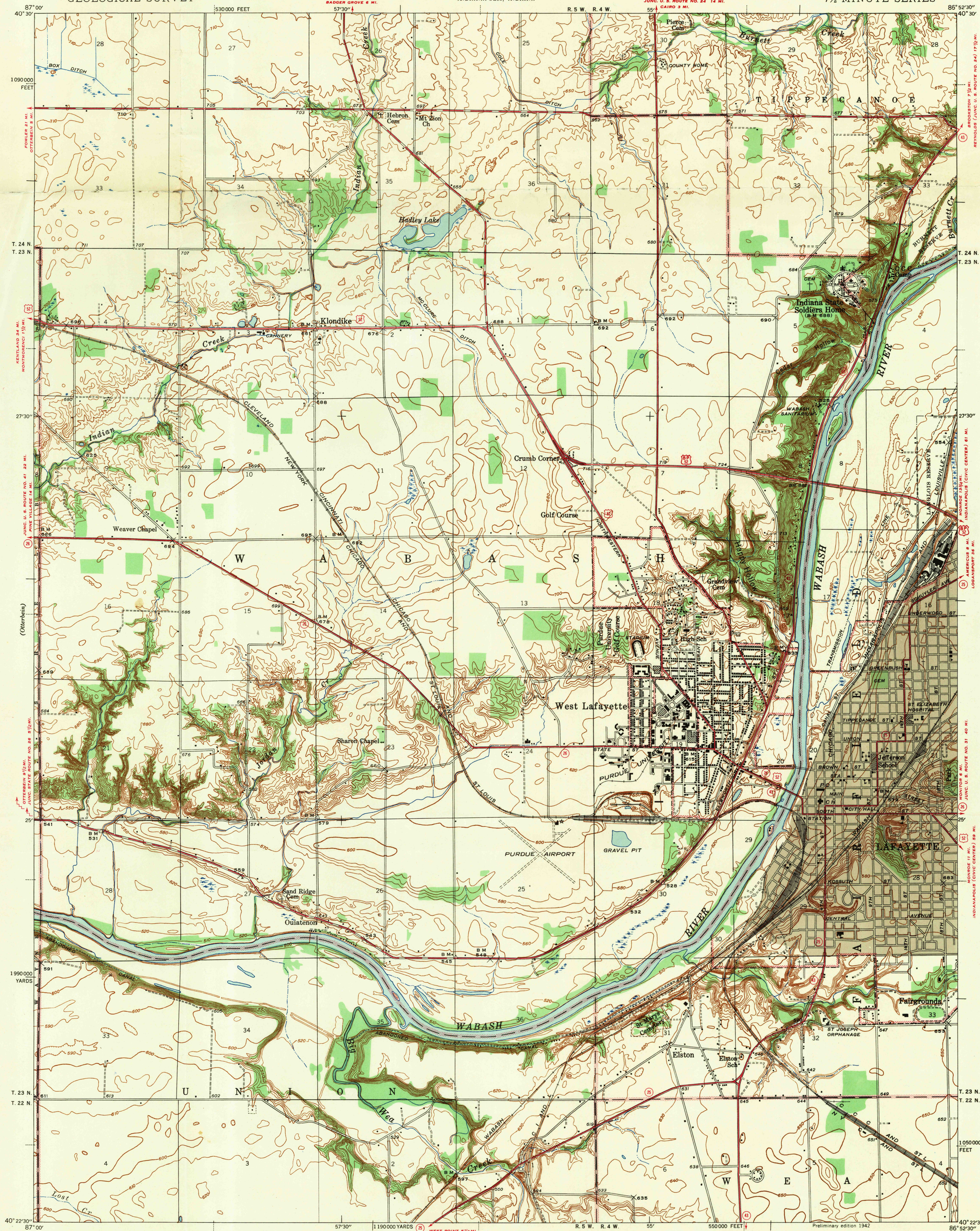


UNITED STATES
DEPARTMENT OF THE INTERIOR
GEOLOGICAL SURVEY

STATE OF INDIANA
DEPARTMENT OF CONSERVATION
DIVISION OF GEOLOGY
INDIANAPOLIS, INDIANA

U. S. G. S.
FILE COPY
Indication and Rating.

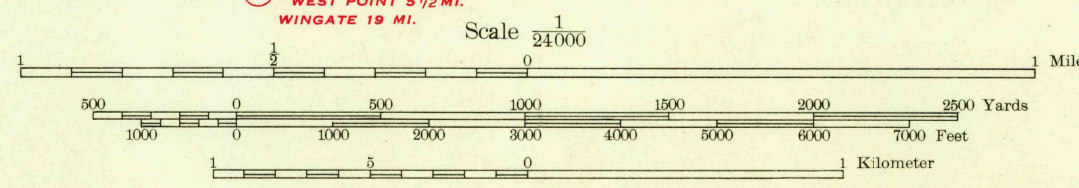
INDIANA
(TIPPECANOE COUNTY)
LAFAYETTE QUADRANGLE
7½-MINUTE SERIES



Topography by F. W. Cook, G. F. Westinghouse,
Shirley Waggener, R. J. Scott, and R. L. Harrison
Area along Wabash River in part by Corps of
Engineers, U. S. Army, 1929
Surveyed in 1940

Gray tint indicates areas in which only
landmark buildings are shown

TRUE NORTH
MAGNETIC NORTH
APPROXIMATE MEAN
DECLINATION, 1940



ROUTES USUALLY TRAVELED
HARD IMPROVED SURFACES
OTHER SURFACE IMPROVEMENTS
U. S. ROUTE 1942
STATE ROUTE
USCS
Historical File
Topographic Division
U. S. G. S.
FILE COPY
Indication and Rating.

Polyconic projection. 1927 North American datum
5000 yard grid based on U. S. zone system, C
10000 foot grid based on Indiana (West)
rectangular coordinate system

LAFAYETTE, IND.
N4022.5-W8652.5/7.5

APR 25 1942