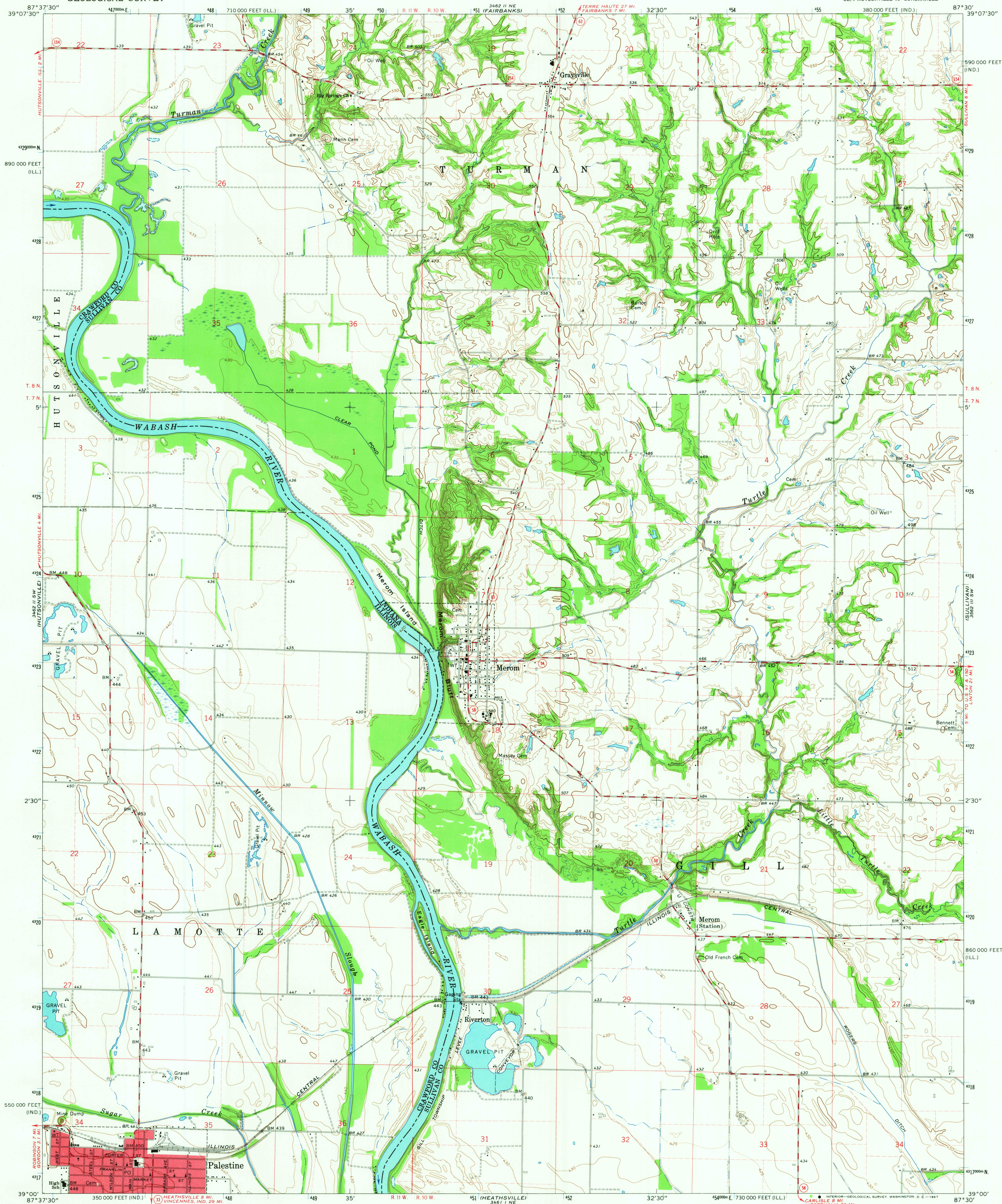


UNITED STATES
DEPARTMENT OF THE INTERIOR
GEOLOGICAL SURVEY

MEROM QUADRANGLE
INDIANA-ILLINOIS
7.5 MINUTE SERIES (TOPOGRAPHIC)
SE/4 HUTSONVILLE 15' QUADRANGLE



Mapped, edited, and published by the Geological Survey
Indiana area mapped in cooperation with Indiana
Department of Natural Resources

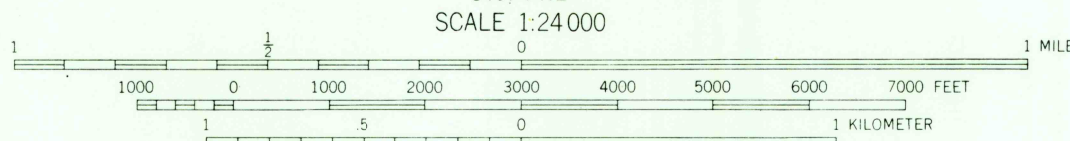
Control by USGS and USC&GS

Planimetry by photogrammetric methods from aerial photographs taken 1964
Topography of Indiana area by planimetric surveys 1941. Revised 1966
Topography of Illinois area by photogrammetric methods from aerial
photographs taken 1956. Field checked 1957. Revised 1966

Polyconic projection. 1927 North American datum
10,000-foot grids based on Indiana coordinate system, west zone,
and Illinois coordinate system, east zone
1000-meter Universal Transverse Mercator grid ticks,
zone 16, shown in blue

Red tint indicates area in which only landmark buildings are shown
Fine red dashed lines indicate selected fence and field lines where
generally visible on aerial photographs. This information is unchecked

UTM GRID AND 1966 MAGNETIC NORTH
DECLINATION AT CENTER OF SHEET



CONTOUR INTERVAL 10 FEET
DOTTED LINES REPRESENT 5-FOOT CONTOURS
DATUM IS MEAN SEA LEVEL

THIS MAP COMPLIES WITH NATIONAL MAP ACCURACY STANDARDS
FOR SALE BY U. S. GEOLOGICAL SURVEY, WASHINGTON, D. C. 20242,
INDIANA DEPARTMENT OF NATURAL RESOURCES, INDIANAPOLIS, INDIANA 46204
AND STATE GEOLOGICAL SURVEY, URBANA, ILLINOIS 61801
A FOLDER DESCRIBING TOPOGRAPHIC MAPS AND SYMBOLS IS AVAILABLE ON REQUEST

USGS
Historical File
Topographic Division



ROAD CLASSIFICATION
Medium duty ——— Light duty ———
Unimproved dirt ———
State Route ———

MEROM, IND.-ILL.
SE/4 HUTSONVILLE 15' QUADRANGLE
N3900—W8730/7.5

1966

AMS 3462 II SE-SERIES V851

U.S.G.S.
FILE COPY
TOPOGRAPHIC DIVISION

3545
AUG 7 1967