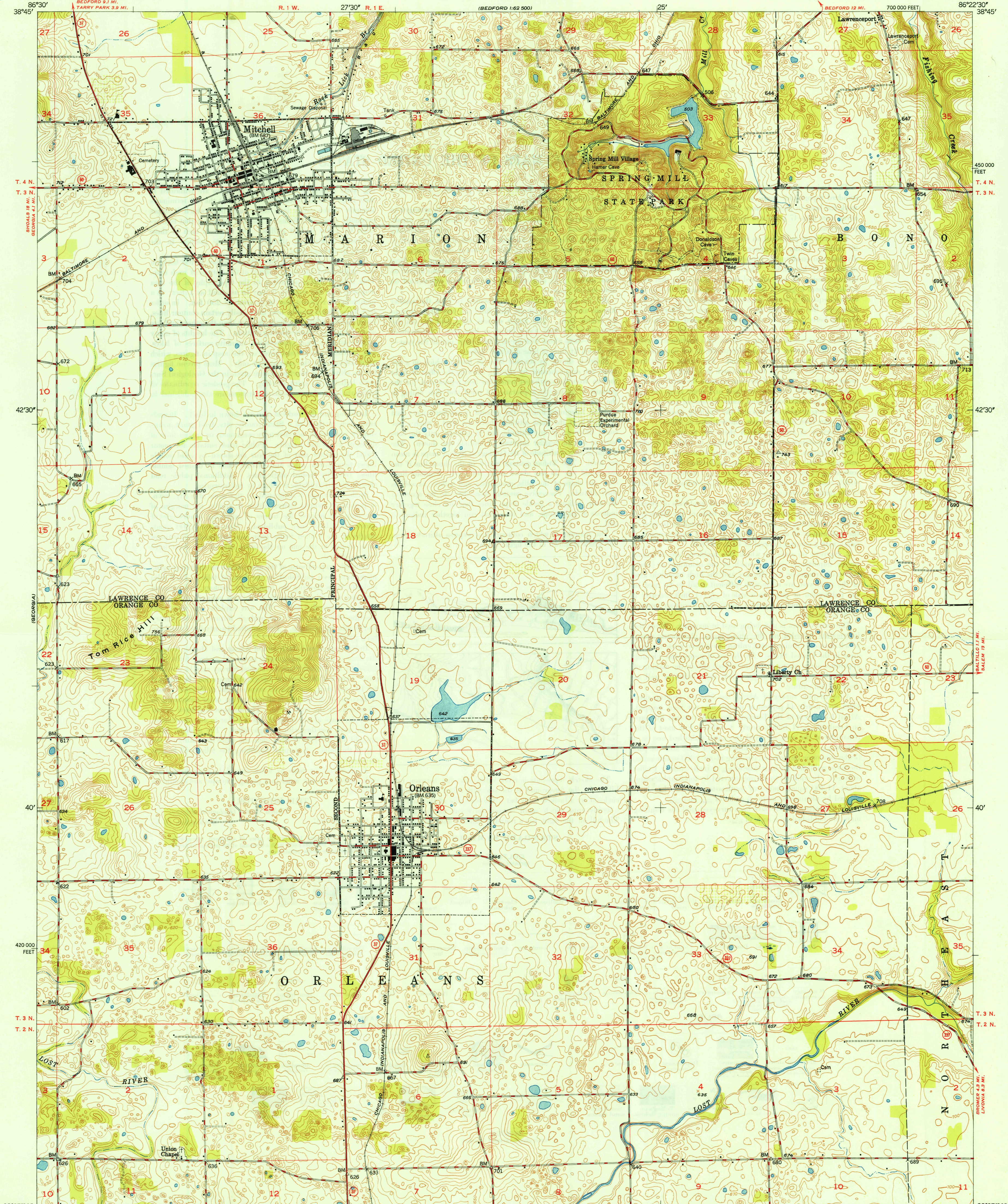


UNITED STATES
DEPARTMENT OF THE INTERIOR
GEOLOGICAL SURVEY

U. S. G. S.
FILE COPY
Inspection and editing.

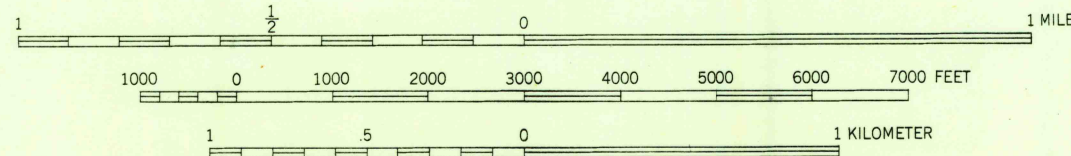
STATE OF INDIANA
INDIANA DEPARTMENT OF CONSERVATION
INDIANAPOLIS, INDIANA

MITCHELL QUADRANGLE
INDIANA
7.5 MINUTE SERIES (TOPOGRAPHIC)



Mapped, edited, and published by the Geological Survey
Control by USGS and USC&GS
Culture and drainage in part compiled from
aerial photographs taken 1946
Topography by plane-table methods 1948
Polyconic projection, 1927 North American datum
10,000-foot grid based on Indiana coordinate system,
east zone

SCALE 1:24000



CONTOUR INTERVAL 10 FEET
DATUM IS MEAN SEA LEVEL

USGS
Historical File
Topographic Division

ROAD CLASSIFICATION
HEAVY-DUTY ALL WEATHER ROADS DRY WEATHER ROADS
Heavy-duty 4 LANE LANE Improved dirt
Medium-duty 4 LANE LANE Unimproved dirt
Loose-surface, graded, or narrow hard-surface
U. S. Route State Route

U. S. G. S.
FILE COPY
Inspection and editing.

MITCHELL, IND.
N3837.5-W8622.5/7.5

EDITION OF 1950

THIS MAP COMPLIES WITH NATIONAL MAP ACCURACY STANDARDS
FOR SALE BY U. S. GEOLOGICAL SURVEY, WASHINGTON 25, D. C.

MAR 20 1950