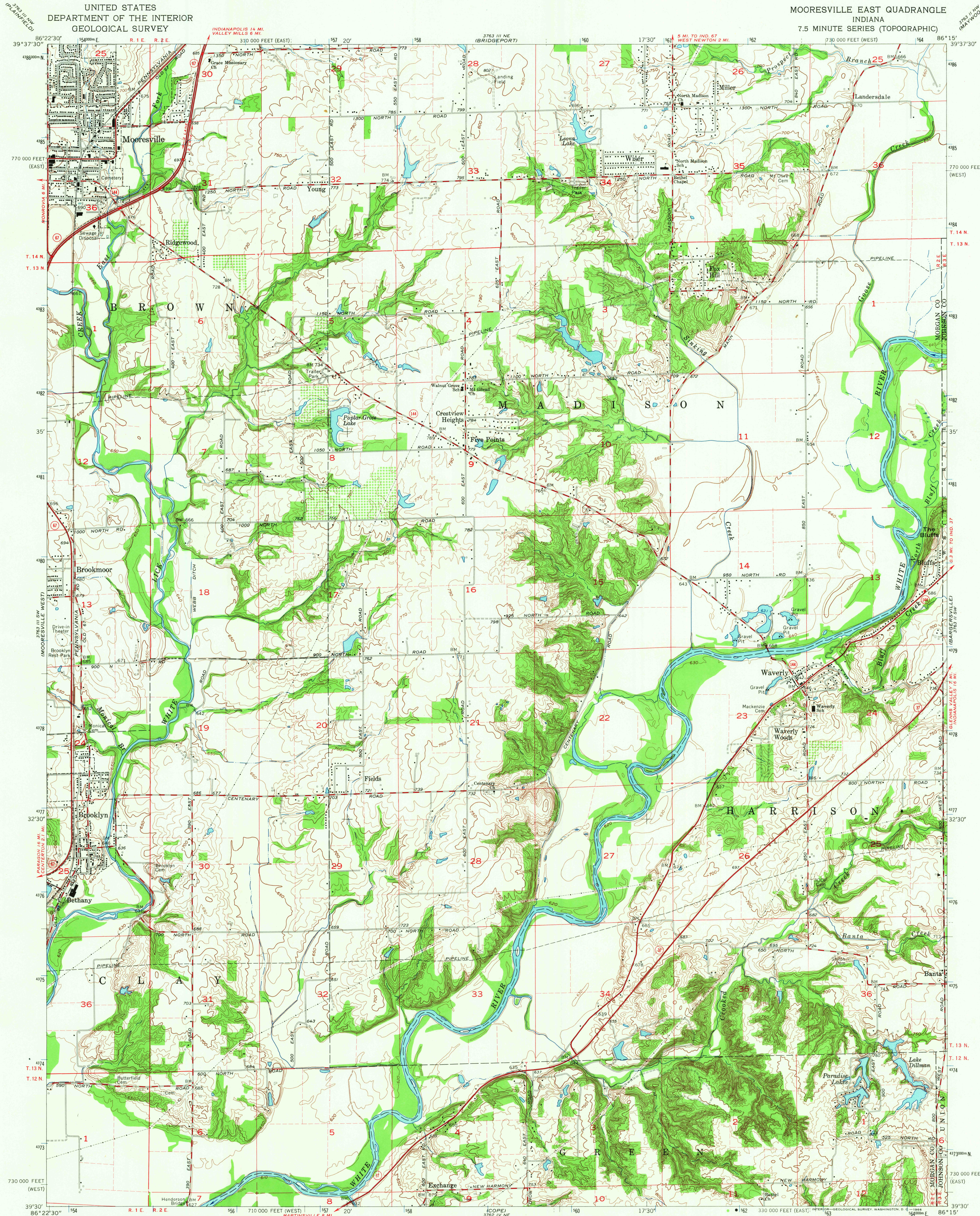
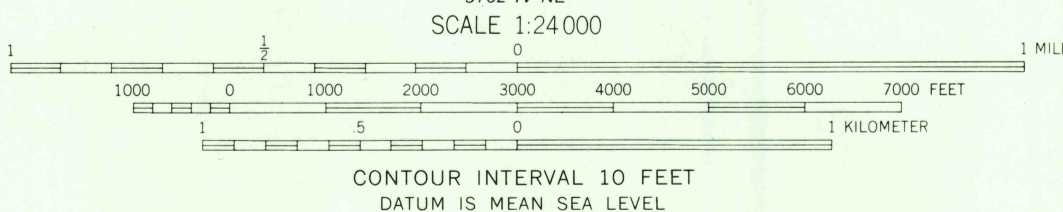


UNITED STATES
DEPARTMENT OF THE INTERIOR
GEOLOGICAL SURVEY

MOORESVILLE EAST QUADRANGLE
INDIANA
7.5 MINUTE SERIES (TOPOGRAPHIC)



Mapped, edited, and published by the Geological Survey
Revised in cooperation with Indiana Department
of Natural Resources
Control by USGS, USC&GS, USCE, and Indiana Flood Control and
Water Resources Commission
Topography by photogrammetric methods from aerial photographs
taken 1954. Field checked 1955. Revised 1965
Polyconic projection. 1927 North American datum
10,000-foot grids based on Indiana coordinate system, west and
east zones
1000-meter Universal Transverse Mercator grid ticks, zone 16,
shown in blue
Fine red dashed lines indicate selected fence and field lines where
generally visible on aerial photographs. This information is unchecked



USGS
Historical File
Topographic Division

ROAD CLASSIFICATION
Heavy-duty ——— Light-duty ———
Medium-duty ——— Unimproved dirt ———
State Route



U.S.G.S.
TOPOGRAPHIC DIVISION

MOORESVILLE EAST, IND.
N3930—W8615/7.5

1965

AMS 3763 III SE—SERIES V851

THIS MAP COMPLIES WITH NATIONAL MAP ACCURACY STANDARDS
FOR SALE BY U.S. GEOLOGICAL SURVEY, WASHINGTON, D. C. 20242
AND INDIANA DEPARTMENT OF NATURAL RESOURCES, INDIANAPOLIS, INDIANA
A FOLDER DESCRIBING TOPOGRAPHIC MAPS AND SYMBOLS IS AVAILABLE ON REQUEST

2635
OCT 14 1966