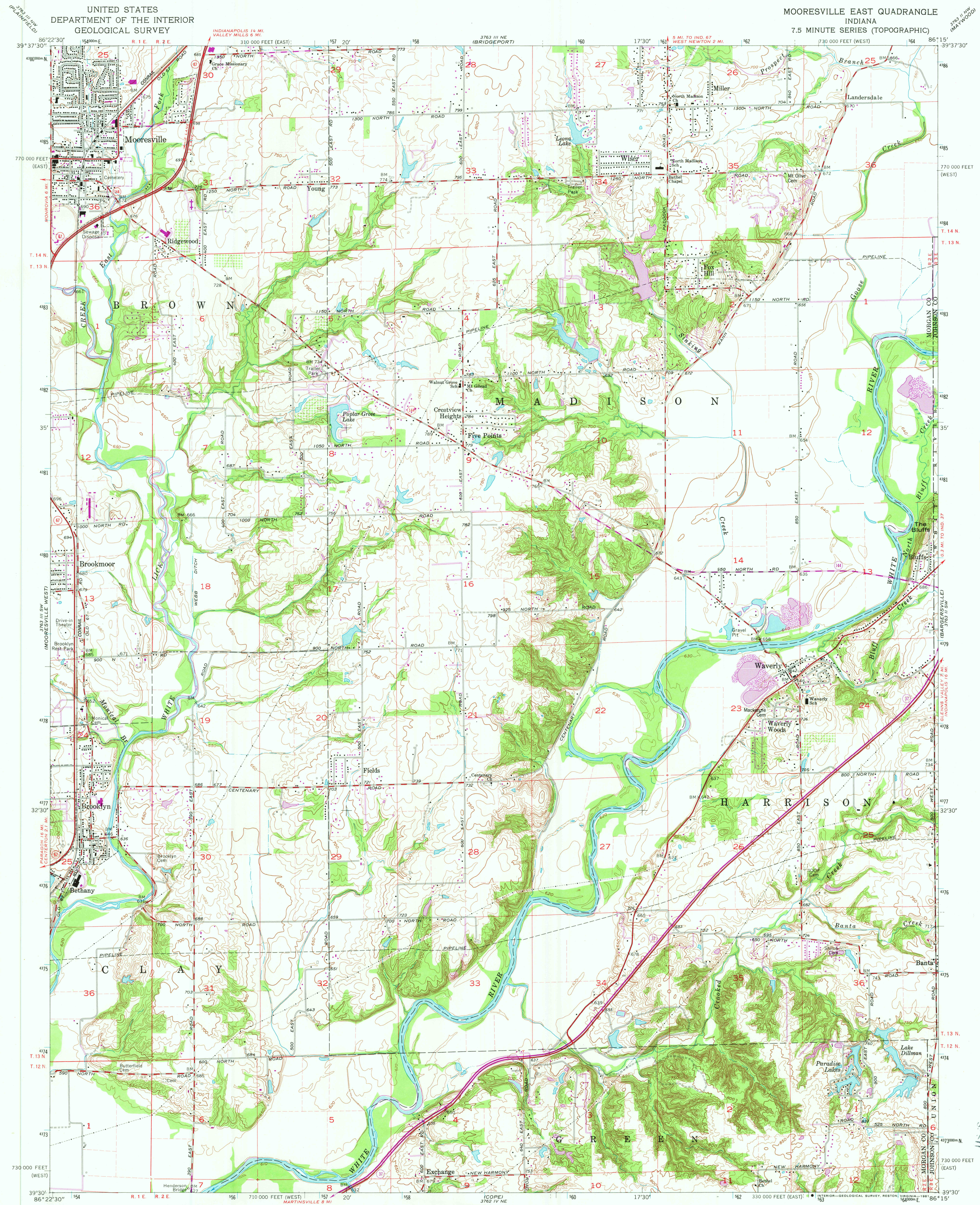


UNITED STATES  
DEPARTMENT OF THE INTERIOR  
GEOLOGICAL SURVEY

MOORESVILLE EAST QUADRANGLE  
INDIANA  
7.5 MINUTE SERIES (TOPOGRAPHIC)

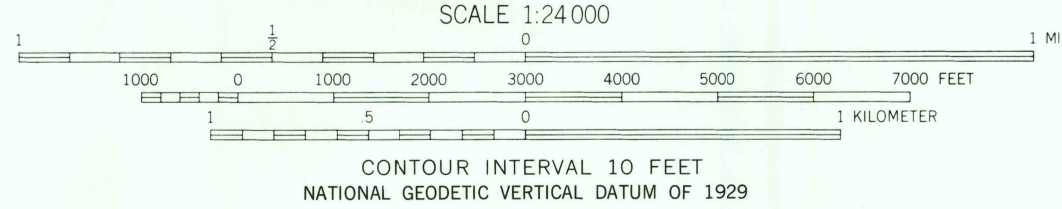
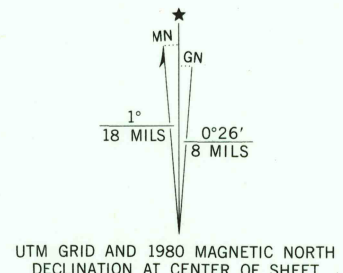


Mapped, edited, and published by the Geological Survey  
Revised in cooperation with Indiana Department  
of Natural Resources

Control by USGS, NOS/NOAA, USCE, and Indiana Flood Control and  
Water Resources Commission

Topography by photogrammetric methods from aerial photographs  
taken 1954. Field checked 1955. Revised 1965

Polyconic projection  
10,000-foot grids based on Indiana coordinate system, west and east zones  
1000-meter Universal Transverse Mercator grid ticks,  
zone 16, shown in blue. 1927 North American Datum  
To place on the predicted North American Datum 1983  
move the projection lines 2 meters south and  
1 meter west as shown by dashed corner ticks  
Fine red dashed lines indicate selected fence and field lines where  
generally visible on aerial photographs. This information is unchecked



THIS MAP COMPLIES WITH NATIONAL MAP ACCURACY STANDARDS  
FOR SALE BY U. S. GEOLOGICAL SURVEY, RESTON, VIRGINIA 22092  
AND INDIANA DEPARTMENT OF NATURAL RESOURCES, INDIANAPOLIS, INDIANA 46204  
A FOLDER DESCRIBING TOPOGRAPHIC MAPS AND SYMBOLS IS AVAILABLE ON REQUEST

Revisions shown in purple compiled in cooperation with State  
of Indiana agencies from aerial photographs taken 1977 and other  
source data. This information not field checked. Map edited 1980

ROAD CLASSIFICATION  
Heavy-duty ——— Light-duty ———  
Medium-duty ——— Unimproved dirt ———  
○ State Route

MOORESVILLE EAST, IND.  
N3930-W8615/7.5

1965  
PHOTOREVISED 1980  
DMA 3763 III SE-SERIES V851

USGS  
Historical File  
National Mapping Div.

MAY 20 1981  
4050