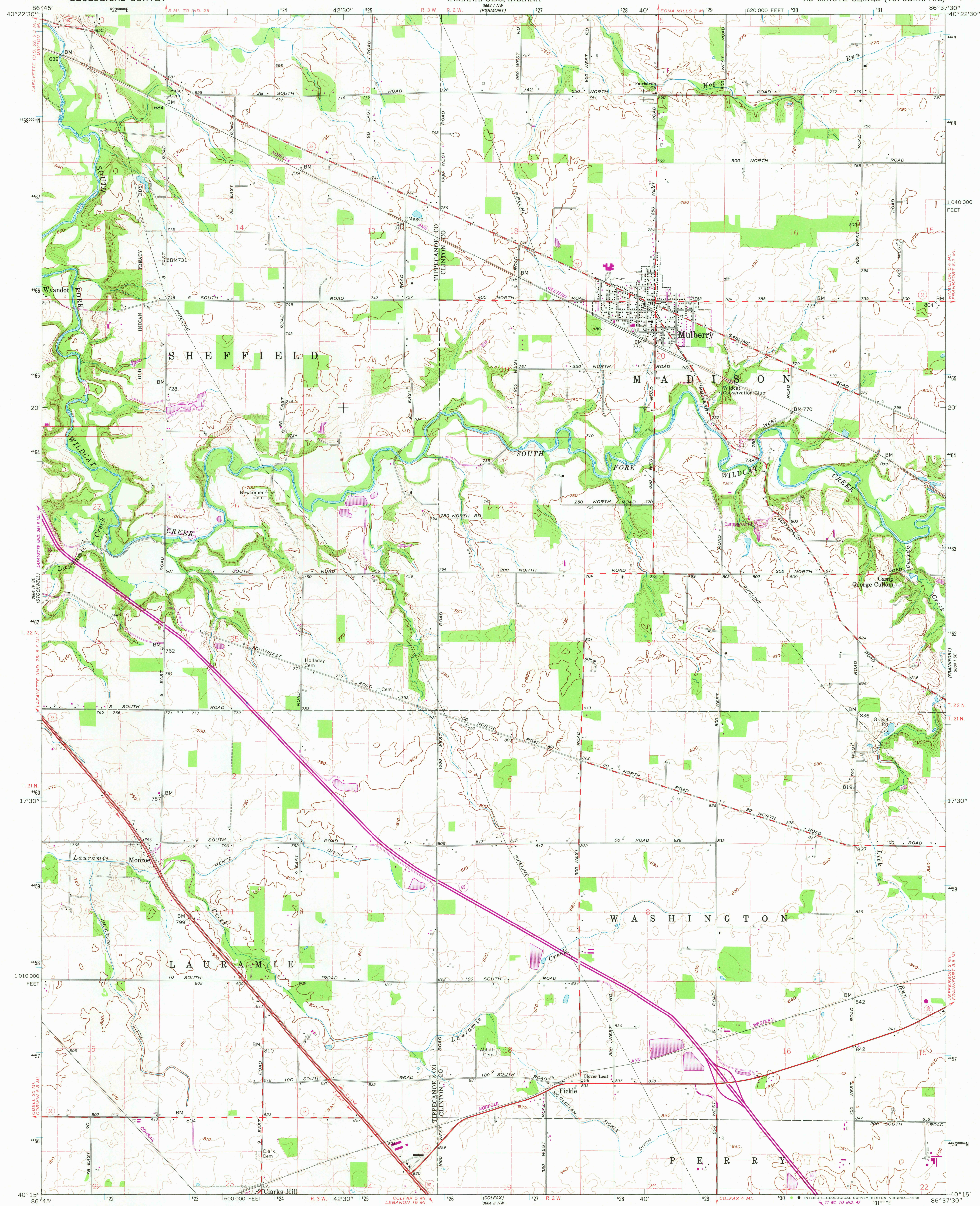


UNITED STATES
DEPARTMENT OF THE INTERIOR
GEOLOGICAL SURVEY

STATE OF INDIANA
INDIANA DEPARTMENT OF CONSERVATION
INDIANAPOLIS, INDIANA

MULBERRY QUADRANGLE
INDIANA
7.5 MINUTE SERIES (TOPOGRAPHIC)



Mapped, edited, and published by the Geological Survey

Control by USGS and NOS/NOAA

Topography by photogrammetric methods from aerial

photographs taken 1958. Field checked 1961

Polyconic projection, 10,000-foot grid based on

Indiana coordinate system, west zone

1000-meter Universal Transverse Mercator grid ticks,

zone 16, shown in blue. 1927 North American Datum

To place on the predicted North American Datum 1983

move the projection lines 1 meter south and

1 meter east as shown by dashed corner ticks

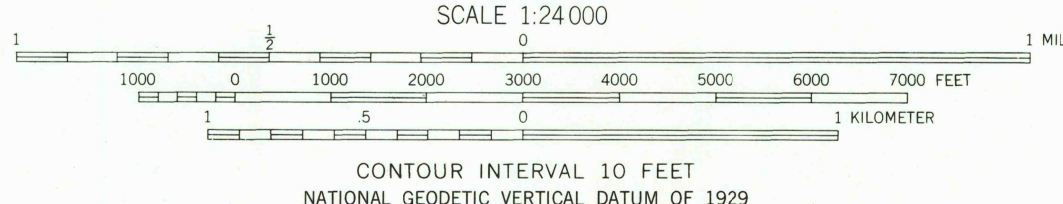
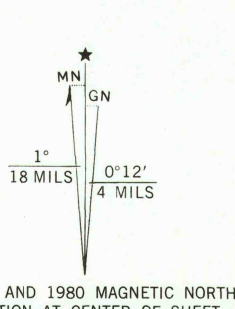
Fine red dashed lines indicate selected fence and field lines where

generally visible on aerial photographs. This information is unchecked

Revisions shown in purple compiled in cooperation with State of

Indiana agencies from aerial photographs taken 1977 and other

source data. This information not field checked. Map edited 1980



ROAD CLASSIFICATION	
Primary highway, hard surface	Light-duty road, hard or improved surface
Secondary highway, hard surface	Unimproved road
Interstate Route	U.S. Route
	State Route

THIS MAP COMPLIES WITH NATIONAL MAP ACCURACY STANDARDS
FOR SALE BY U.S. GEOLOGICAL SURVEY, RESTON, VIRGINIA 22092
AND INDIANA DEPARTMENT OF NATURAL RESOURCES, INDIANAPOLIS, INDIANA 46204
A FOLDER DESCRIBING TOPOGRAPHIC MAPS AND SYMBOLS IS AVAILABLE ON REQUEST

MULBERRY, IND.
N4015-W8637.5/7.5

1961
PHOTOREVISED 1980
DMA 3664 1 SW-SERIES V851

USGS
Historical File
Topographic Division

DEC 4 1980
2350