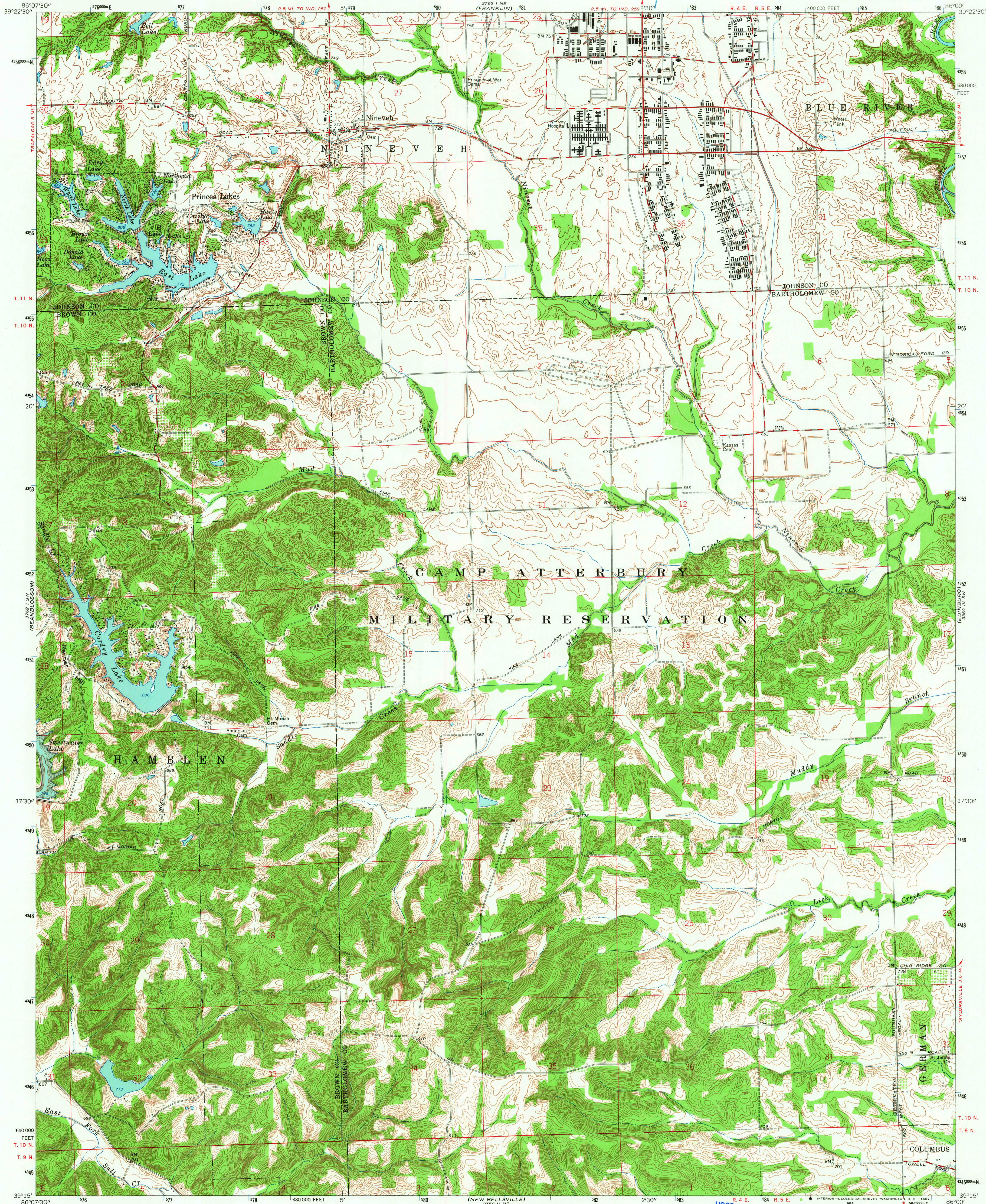


UNITED STATES  
DEPARTMENT OF THE INTERIOR  
GEOLOGICAL SURVEY

NINEVEH QUADRANGLE  
INDIANA  
7.5 MINUTE SERIES (TOPOGRAPHIC)  
SE/4 FRANKLIN 15' QUADRANGLE



Mapped, edited, and published by the Geological Survey  
Revised in cooperation with State of Indiana  
Department of Conservation  
Control by USGS and USC&GS  
Planimetry by photogrammetric methods from aerial  
photographs taken 1944. Topography by planimetric surveys 1947.  
Revised 1962  
Polyconic projection. 1927 North American datum  
10,000-foot grid based on Indiana coordinate system, east zone  
1000-meter Universal Transverse Mercator grid ticks,  
zone 16, shown in blue

UTM GRID AND 1962 MAGNETIC NORTH  
DECLINATION AT CENTER OF SHEET

SCALE 1:24,000  
CONTOUR INTERVAL 10 FEET  
DATUM IS MEAN SEA LEVEL

THIS MAP COMPLIES WITH NATIONAL MAP ACCURACY STANDARDS  
FOR SALE BY U. S. GEOLOGICAL SURVEY, WASHINGTON, D. C. 20242  
AND INDIANA DEPARTMENT OF NATURAL RESOURCES, INDIANAPOLIS, INDIANA 46204  
A FOLDER DESCRIBING TOPOGRAPHIC MAPS AND SYMBOLS IS AVAILABLE ON REQUEST

USGS  
Historical File  
Topographic Division



ROAD CLASSIFICATION  
Heavy-duty ——— Light-duty ———  
Medium-duty ——— Unimproved dirt ———

U.S.G.S.  
FILE COPY  
TOPOGRAPHIC DIVISION

NINEVEH, IND.  
SE/4 FRANKLIN 15' QUADRANGLE  
N3915—W8600/7.5  
1962  
AMS 3762 I SE—SERIES V851

7225  
APR 4 1967