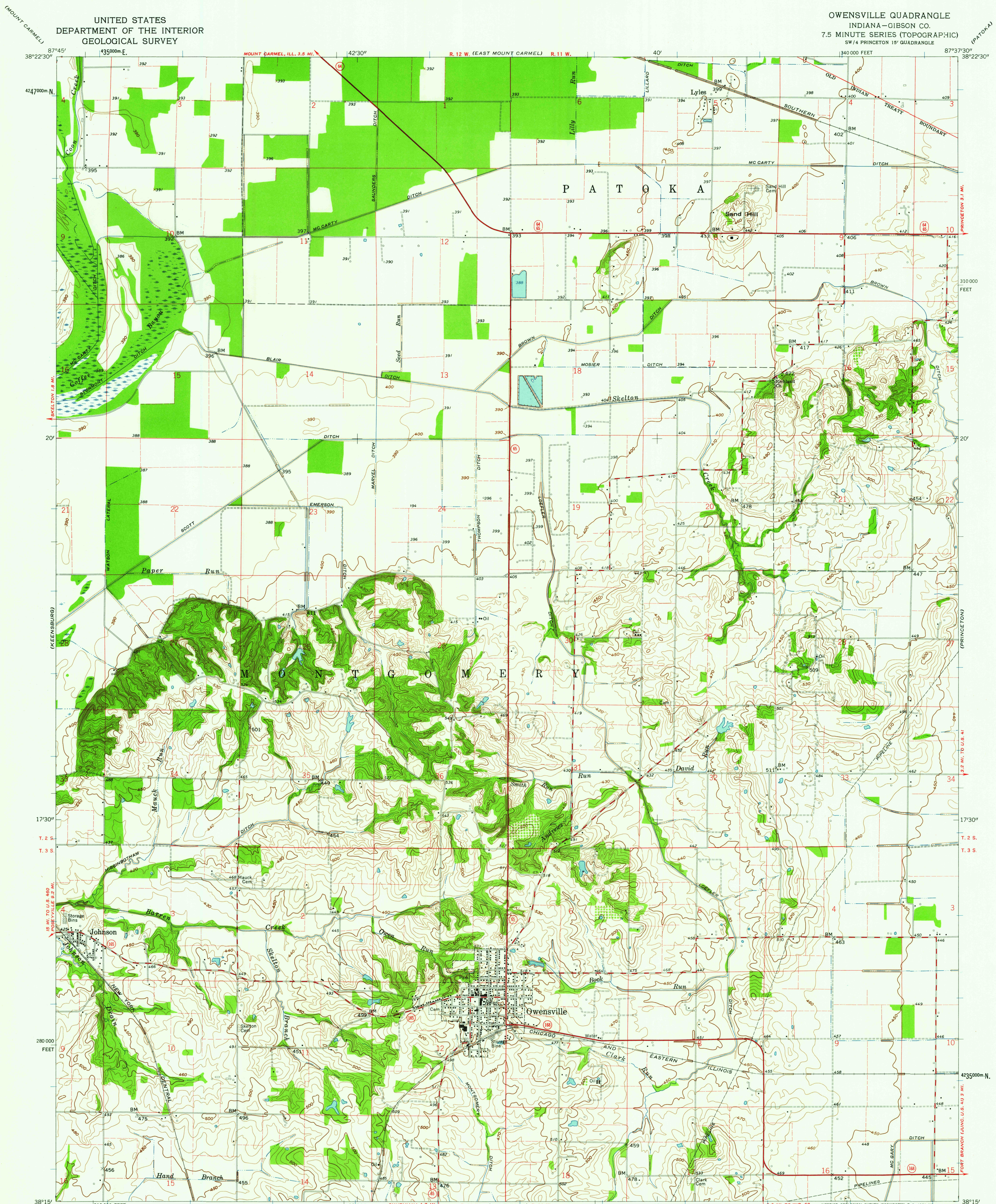


UNITED STATES
DEPARTMENT OF THE INTERIOR
GEOLOGICAL SURVEY

OWENSVILLE QUADRANGLE
INDIANA—GIBSON CO.
7.5 MINUTE SERIES (TOPOGRAPHIC)
SW 1/4 PRINCETON 15' QUADRANGLE



Mapped, edited, and published by the Geological Survey

Control by USGS and USC&GS

Topography from aerial photographs by photogrammetric methods and by planetable surveys 1959. Aerial photographs taken 1958

Polyconic projection. 1927 North American datum

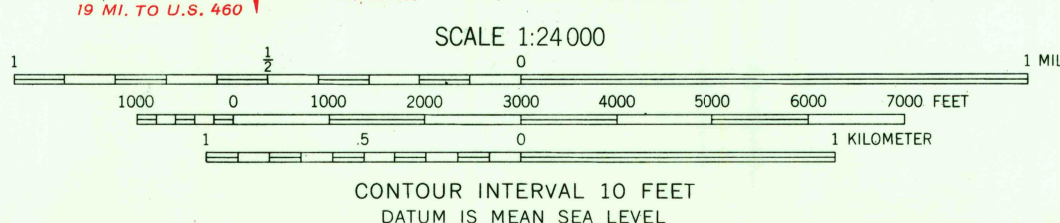
10,000-foot grid based on Indiana coordinate system, west zone

1000-meter Universal Transverse Mercator grid ticks, zone 16, shown in blue

Fine red dashed lines indicate selected fence and field lines where generally visible on aerial photographs. This information is unchecked

All wells shown are oil wells

TRUE NORTH
MAGNETIC NORTH
APPROXIMATE MEAN
DECLINATION, 1959



THIS MAP COMPLIES WITH NATIONAL MAP ACCURACY STANDARDS
FOR SALE BY U.S. GEOLOGICAL SURVEY, WASHINGTON 25, D. C.
AND INDIANA DEPARTMENT OF CONSERVATION, INDIANAPOLIS, INDIANA
A FOLDER DESCRIBING TOPOGRAPHIC MAPS AND SYMBOLS IS AVAILABLE ON REQUEST

USGS
Historical File
Topographic Division



ROAD CLASSIFICATION
Heavy-duty ——— Light-duty ———
Medium-duty ——— Unimproved dirt ———
State Route ———

U.S.G.S.
FILE COPY
TOPOGRAPHIC DIVISION
OWENSVILLE, IND.
SW 1/4 PRINCETON 15' QUADRANGLE
N 3815—W 8737.5/7.5
1959

DEC 14 1961
2365