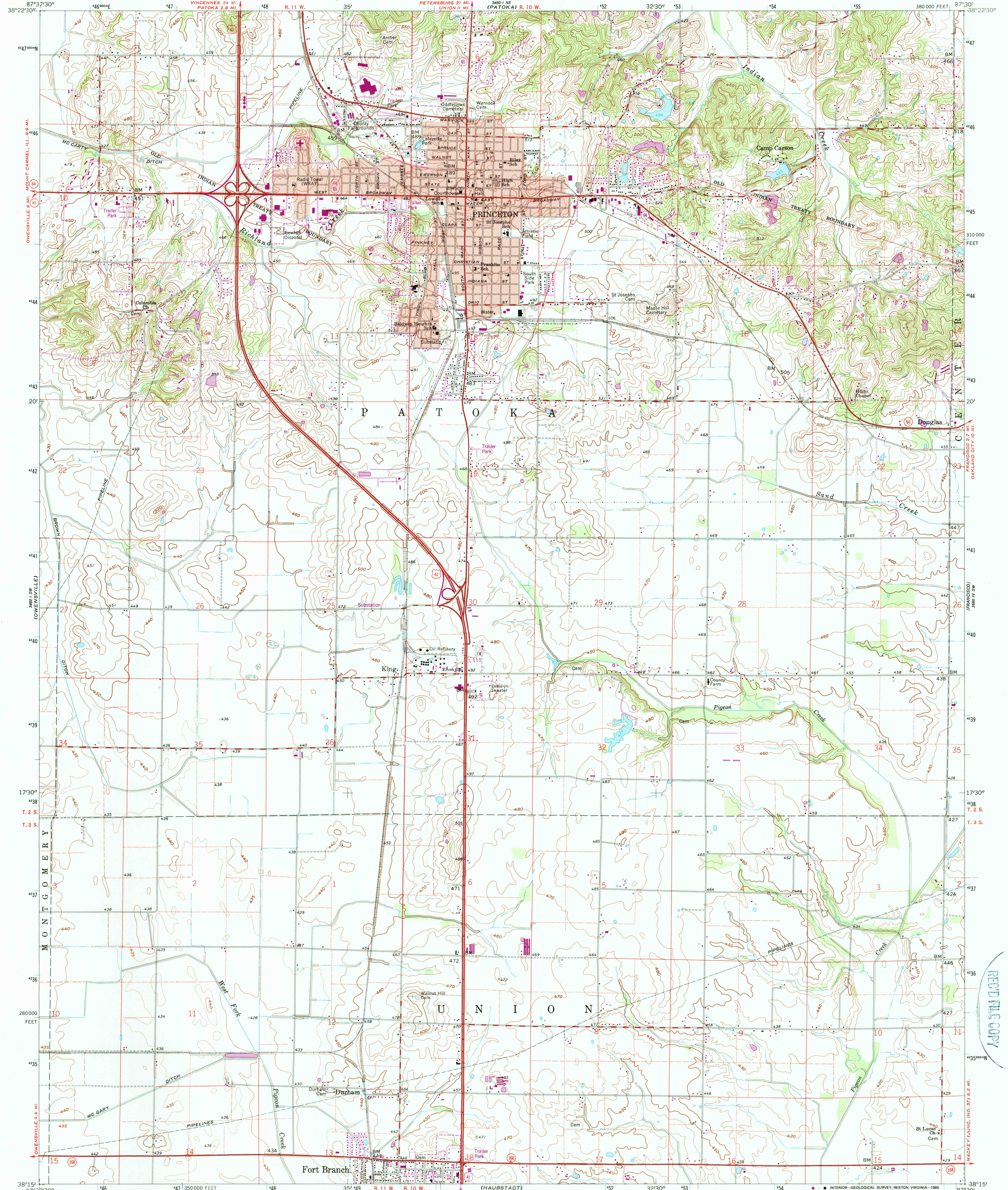


UNITED STATES  
DEPARTMENT OF THE INTERIOR  
GEOLOGICAL SURVEY

PRINCETON QUADRANGLE  
INDIANA—GIBSON CO.  
7.5 MINUTE SERIES (TOPOGRAPHIC)  
SE 1/4 PRINCETON 15' QUADRANGLE



Mapped, edited, and published by the Geological Survey

Control by USGS and USC&GS

Topography from aerial photographs by photogrammetric methods  
and by planimetry surveys 1959. Aerial photographs taken 1958

Polyconic projection  
10,000-foot grid based on Indiana coordinate system, west zone  
1000-meter Universal Transverse Mercator grid ticks,  
zone 16, shown in blue 1927 North American Datum  
To place on the predicted North American Datum 1983  
move the projection lines 3 meters south and  
2 meters east as shown by dashed corner ticks

Fine red dashed lines indicate selected fence and field lines where  
generally visible on aerial photographs. This information is unchecked  
Red tint indicates areas in which only landmark buildings are shown  
All wells shown are oil wells

UTM GRID AND 1983 MAGNETIC NORTH  
DECLINATION AT CENTER OF SHEET

SCALE 1:24,000  
1 0 1000 2000 3000 4000 5000 6000 7000 FEET  
1 0 5 10 KILOMETER

CONTOUR INTERVAL 10 FEET  
DOTTED LINES REPRESENT 5-FOOT CONTOURS  
NATIONAL GEODETIC VERTICAL DATUM OF 1929

THIS MAP COMPLIES WITH NATIONAL MAP ACCURACY STANDARDS  
FOR SALE BY U.S. GEOLOGICAL SURVEY, DENVER, COLORADO 80225, OR RESTON, VIRGINIA 22092  
AND INDIANA DEPARTMENT OF NATURAL RESOURCES, INDIANAPOLIS, INDIANA 46204  
A FOLDER DESCRIBING TOPOGRAPHIC MAPS AND SYMBOLS IS AVAILABLE ON REQUEST

Revisions shown in purple and woodland compiled in cooperation  
with State of Indiana agencies from aerial photographs taken 1987  
and other sources. This information not field checked  
Map edited 1989

ROAD CLASSIFICATION

Heavy-duty ——— Light-duty ———  
Medium-duty ——— Unimproved dirt ———  
U.S. Route ——— State Route ———

PRINCETON, IND.  
SE 1/4 PRINCETON 15' QUADRANGLE  
38087-C5-TF-024

1959  
PHOTOREVISED 1989  
DMA 3460 I SE—SERIES V851

REC'D FILE COPY  
JUN 22 1990

U.S. GEOLOGICAL SURVEY  
RESTON, VIRGINIA 22092