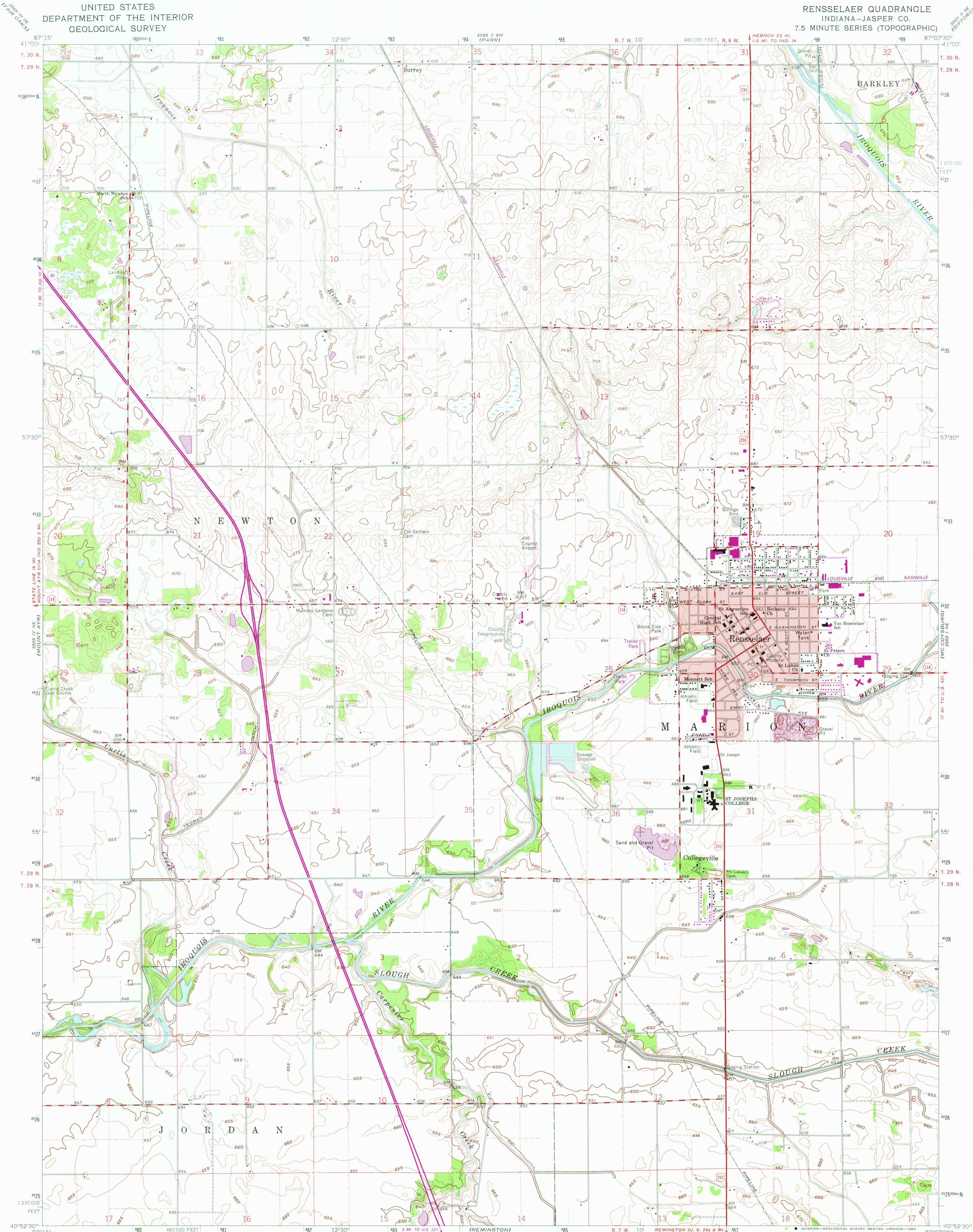


UNITED STATES
DEPARTMENT OF THE INTERIOR
GEOLOGICAL SURVEY

RENSSELAER QUADRANGLE
INDIANA-JASPER CO.
7.5 MINUTE SERIES (TOPOGRAPHIC)



Mapped, edited, and published by the Geological Survey

Control by USGS and NOS/NOAA

Topography by photogrammetric methods from aerial

photographs taken 1959. Field checked 1962

Polyconic projection. 10,000-foot grid based on

Indiana coordinate system, west zone

1000-meter Universal Transverse Mercator grid ticks,

zone 16, shown in blue. 1927 North American Datum

To place on the predicted North American Datum 1983

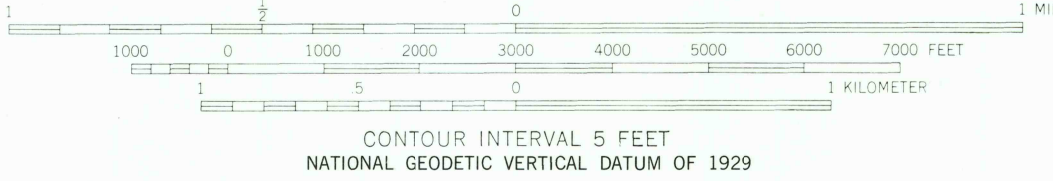
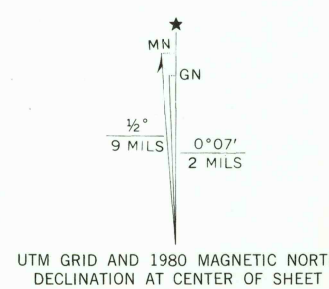
move the projection lines 3 meters east as shown

by dashed corner ticks

Fine red dashed lines indicate selected fence and field lines where

generally visible on aerial photographs. This information is unchecked

Red tint indicates areas in which only landmark buildings are shown



THIS MAP COMPLIES WITH NATIONAL MAP ACCURACY STANDARDS
FOR SALE BY U. S. GEOLOGICAL SURVEY, RESTON, VIRGINIA 22092
AND INDIANA DEPARTMENT OF NATURAL RESOURCES, INDIANAPOLIS, INDIANA 46204
A FOLDER DESCRIBING TOPOGRAPHIC MAPS AND SYMBOLS IS AVAILABLE ON REQUEST

Revisions shown in purple compiled in cooperation with State of
Indiana agencies from aerial photographs taken 1976 and other
source data. This information not field checked. Map edited 1980

ROAD CLASSIFICATION	
Primary highway, hard surface	Light-duty road, hard or improved surface
Secondary highway, hard surface	Unimproved road
Interstate Route	U. S. Route
	State Route

USGS
Historical File
Topographic Division

RENSSELAER, IND.
N4052.5—W8707.5/7.5

1962
PHOTOREVISED 1980
DMA 3565 1 NW-SERIES V851



2050
JAN 29 1981