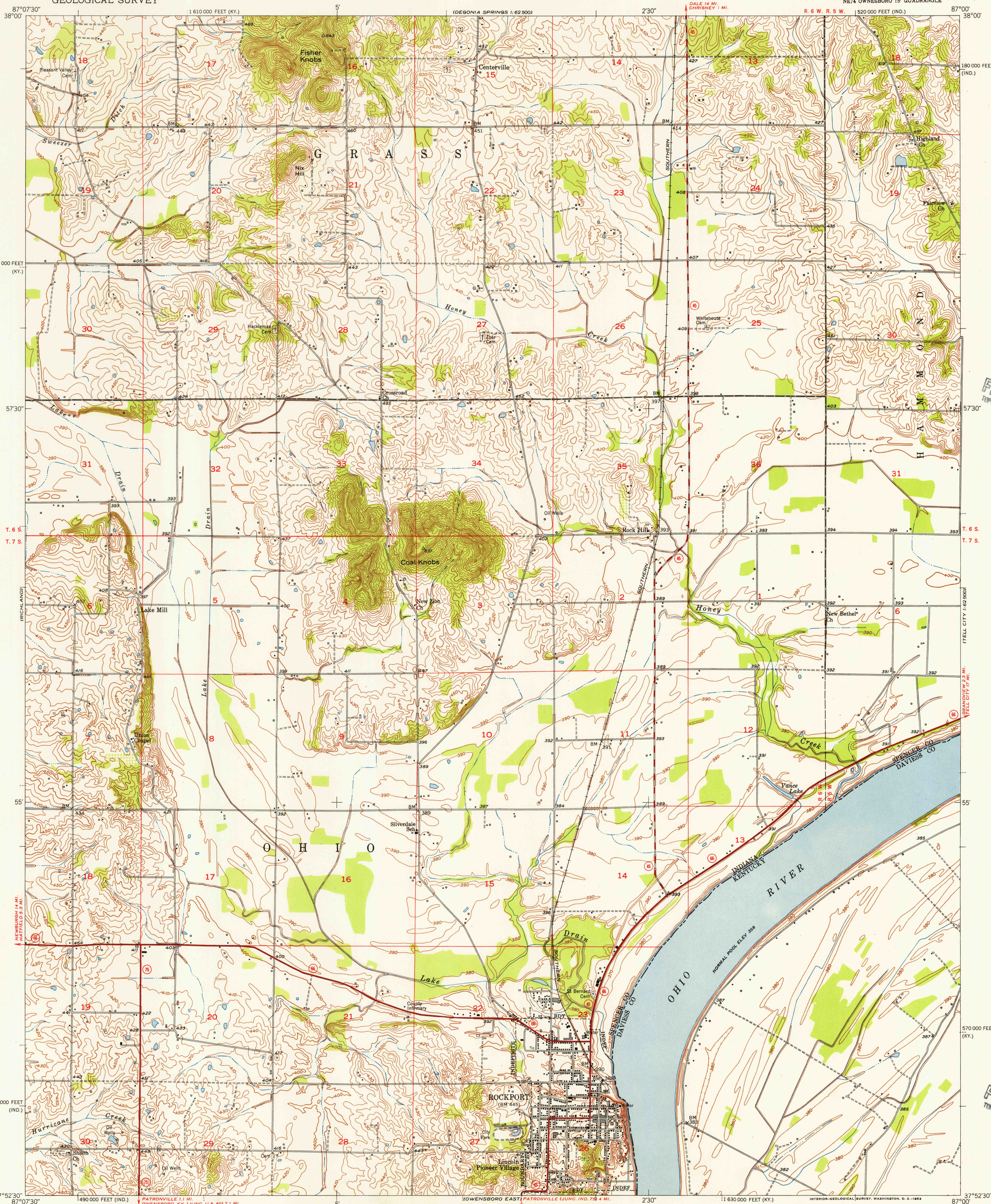


UNITED STATES  
DEPARTMENT OF THE INTERIOR  
GEOLOGICAL SURVEY

ROCKPORT QUADRANGLE  
INDIANA-KENTUCKY  
7.5 MINUTE SERIES (TOPOGRAPHIC)  
NE 1/4 OWENSBORO 15' QUADRANGLE

(SAINT MEINRAD)  
1:62,500

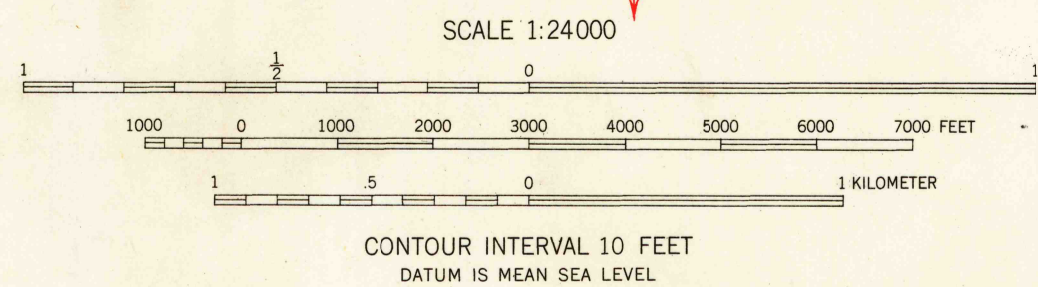


U.S.G.S.  
FILE COPY  
TOPOGRAPHIC DIVISION

U.S.G.S.  
FILE COPY  
TOPOGRAPHIC DIVISION

Mapped, edited, and published by the Geological Survey  
Kentucky area mapped in cooperation with the state  
of Kentucky, Agricultural and Industrial Development  
Board  
Control by USGS, USC&GS, and USCE  
Culture and drainage in part compiled from aerial photographs  
taken 1950. Topography by plane-table surveys 1952  
Polyconic projection. 1927 North American datum  
10,000-foot grids based on Indiana coordinate system,  
west zone, and Kentucky coordinate system, south zone

TRUE NORTH  
MAGNETIC NORTH  
APPROXIMATE MEAN  
DECLINATION, 1952



USGS  
Historical File  
Topographic Division



ROAD CLASSIFICATION  
Heavy-duty 4 LANE 16 LANE Light-duty  
Medium-duty 4 LANE 16 LANE Unimproved dirt  
U.S. Route State Route

ROCKPORT, IND.-KY.  
NE 1/4 OWENSBORO 15' QUADRANGLE  
N3752.5-W8700.7.5

1952

THIS MAP COMPLIES WITH NATIONAL MAP ACCURACY STANDARDS  
FOR SALE BY U. S. GEOLOGICAL SURVEY, WASHINGTON 25, D. C.,  
INDIANA DEPARTMENT OF CONSERVATION, INDIANAPOLIS, INDIANA, AND  
KENTUCKY AGRICULTURAL AND INDUSTRIAL DEVELOPMENT BOARD, FRANKFORT, KENTUCKY  
A FOLDER DESCRIBING TOPOGRAPHIC MAPS AND SYMBOLS IS AVAILABLE ON REQUEST

JUN 24 1953