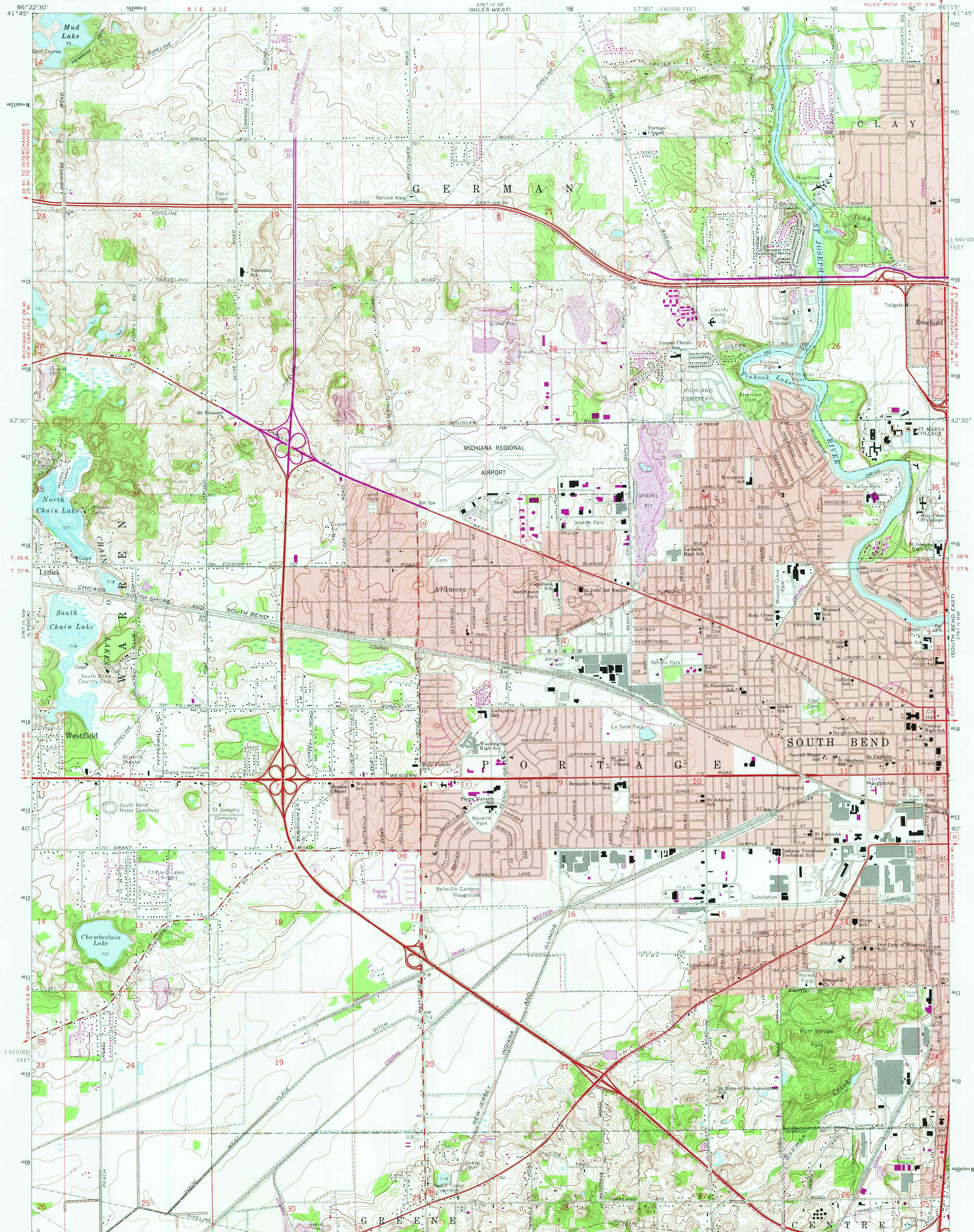
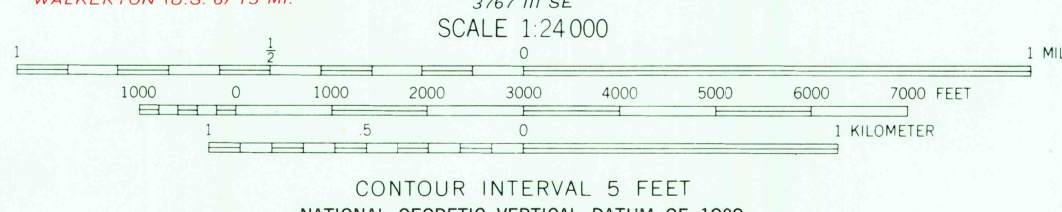


UNITED STATES  
DEPARTMENT OF THE INTERIOR  
GEOLOGICAL SURVEY

SOUTH BEND WEST QUADRANGLE  
INDIANA—ST. JOSEPH CO.  
7.5 MINUTE SERIES (TOPOGRAPHIC)



Mapped, edited, and published by the Geological Survey  
Revised in cooperation with Indiana Department of Natural Resources  
Control by USGS, NOS/NOAA, and Indiana Flood Control  
and Water Resources Commission  
Planimetry by photogrammetric methods from aerial photographs  
taken 1952. Topography by planimetric surveys 1957-1958  
Revised from aerial photographs taken 1967. Field checked 1969  
Depth curves and soundings compiled from USGS-Indiana  
Department of Natural Resources lake charts  
Polyconic projection. 10,000-foot grid based on Indiana coordinate  
system, east zone. 1000-meter Universal Transverse Mercator  
grid ticks, zone 16, shown in blue. 1927 North American Datum  
To place on the predicted North American Datum 1983 move the  
projection lines 2 meters east as shown by dashed corner ticks  
Fine red dashed lines indicate selected fence and field lines where  
generally visible on aerial photographs. This information is unchecked  
Red tint indicates areas in which only landmark buildings are shown



ROAD CLASSIFICATION

Primary highway, all weather, hard surface	Light-duty road, all weather, improved surface
Secondary highway, all weather, hard surface	Unimproved road, fair or dry weather
Interstate Route	U.S. Route
State Route	

USGS  
Historical File  
Topographic Division

SOUTH BEND WEST, IND.  
N4137.5-W8615.7.5  
1969  
PHOTOREVISED 1980  
DMA 3767 III NE-SERIES VB51

THIS MAP COMPLIES WITH NATIONAL MAP ACCURACY STANDARDS  
FOR SALE BY U.S. GEOLOGICAL SURVEY, RESTON, VIRGINIA 22092  
AND INDIANA DEPARTMENT OF NATURAL RESOURCES, INDIANAPOLIS, INDIANA 46204  
A FOLDER DESCRIBING TOPOGRAPHIC MAPS AND SYMBOLS IS AVAILABLE ON REQUEST

Revisions shown in purple and woodland compiled in cooperation with State of Indiana agencies from aerial photographs taken 1977 and other source data. This information not field checked. Map edited 1980

2050  
JAN 29 1981