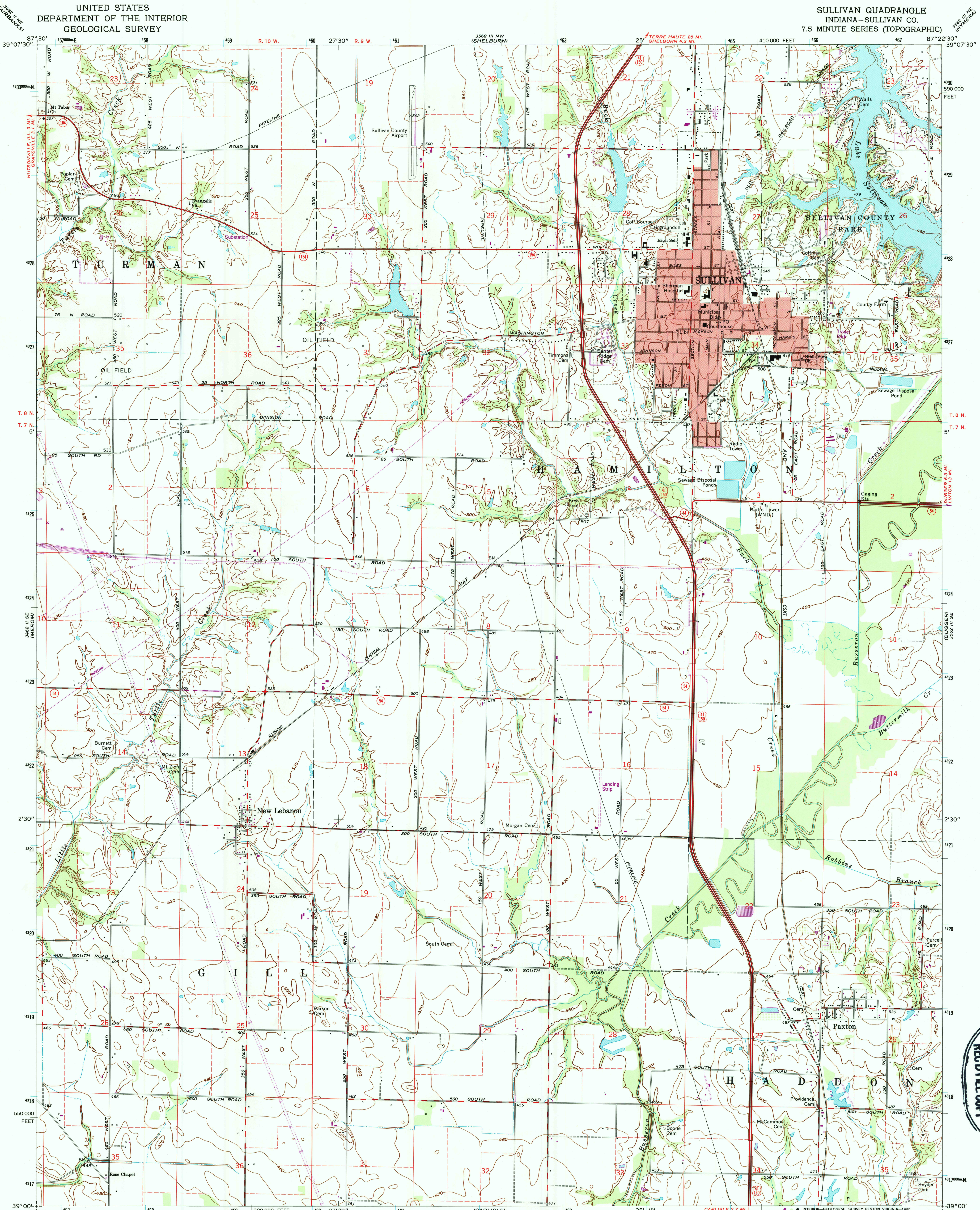


UNITED STATES  
DEPARTMENT OF THE INTERIOR  
GEOLOGICAL SURVEY

SULLIVAN QUADRANGLE  
INDIANA—SULLIVAN CO.  
7.5 MINUTE SERIES (TOPOGRAPHIC)



Mapped, edited, and published by the Geological Survey  
Revised in cooperation with Indiana Department of  
Natural Resources

Control by USGS and NOS/NOAA

Topography by planetable surveys 1941. Revised from aerial  
photographs taken 1972. Field checked 1974

Polyconic projection. 10,000-foot grid ticks based on  
Indiana coordinate system, west zone

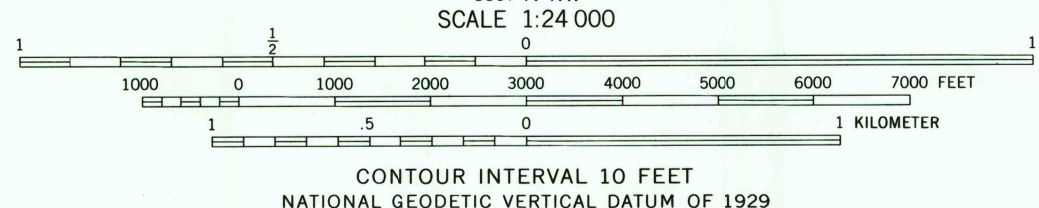
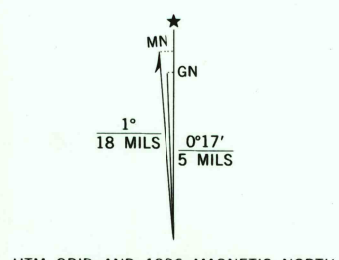
1000-meter Universal Transverse Mercator grid ticks,  
zone 16, shown in blue

1927 North American Datum

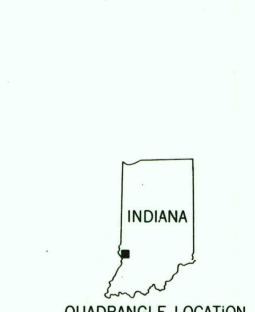
To place on the predicted North American Datum 1983  
move the projection lines 2 meters south and  
2 meters east as shown by dashed corner ticks

Fine red dashed lines indicate selected fence and field lines where  
generally visible on aerial photographs. This information is unchecked

Red tint indicates area in which only landmark buildings are shown



THIS MAP COMPLIES WITH NATIONAL MAP ACCURACY STANDARDS  
FOR SALE BY U.S. GEOLOGICAL SURVEY  
DENVER, COLORADO 80225, OR RESTON, VIRGINIA 22092  
AND INDIANA DEPARTMENT OF NATURAL RESOURCES, INDIANAPOLIS, INDIANA 46204  
A FOLDER DESCRIBING TOPOGRAPHIC MAPS AND SYMBOLS IS AVAILABLE ON REQUEST



ROAD CLASSIFICATION  
Primary highway, hard surface  
Secondary highway, hard surface  
Unimproved road  
Interstate Route  
U. S. Route  
State Route

SULLIVAN, IND.  
39087-A4-TF-024

1974  
PHOTOREVISED 1986  
DMA 3562 III SW—SERIES V85 I

USGS NMN HISTORICAL MAP  
SEP 28 1987  
REC'D FILE COPY