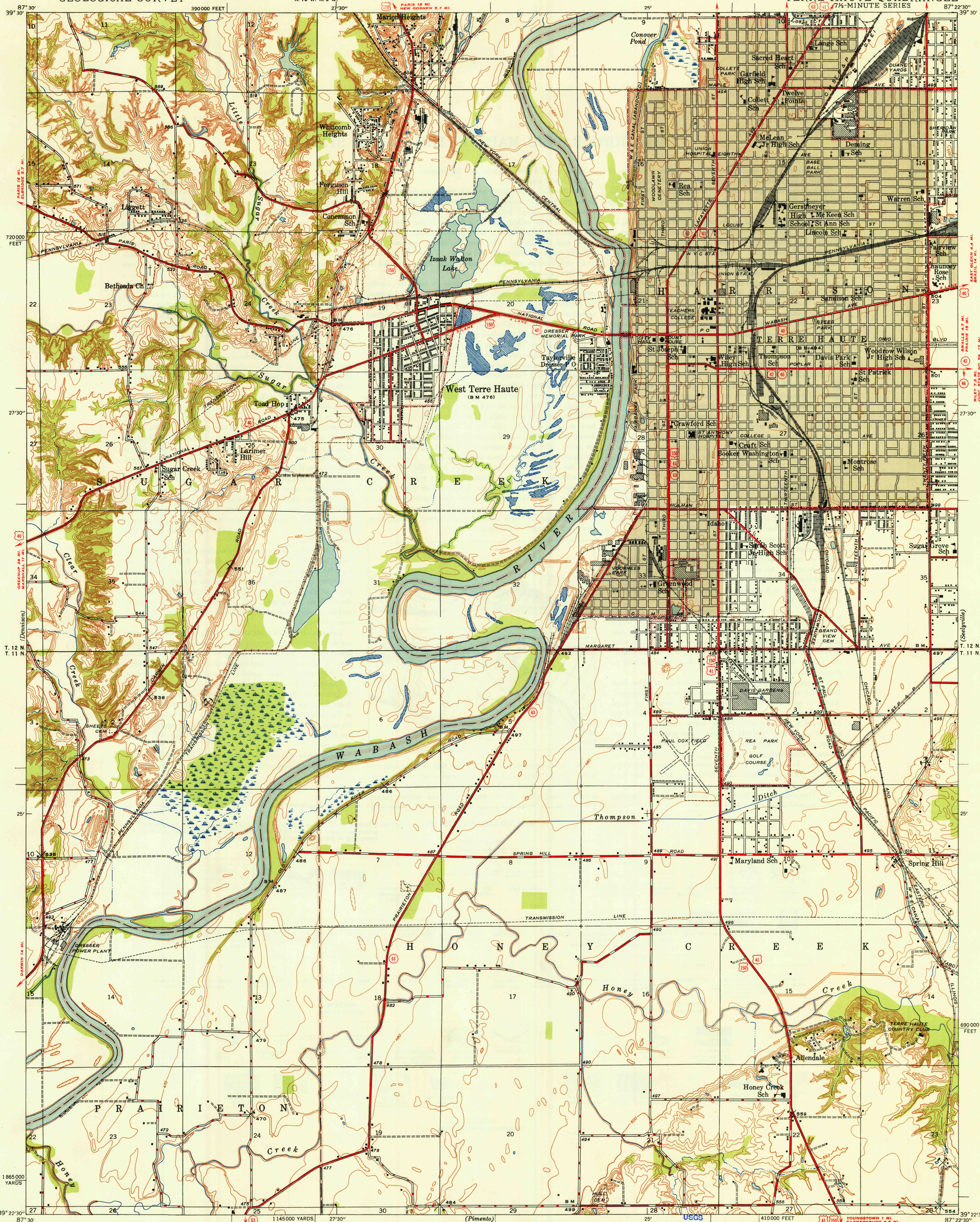


UNITED STATES
DEPARTMENT OF THE INTERIOR
GEOLOGICAL SURVEY

U. S. G. S.
FILE COPY
Inspection and Editing.

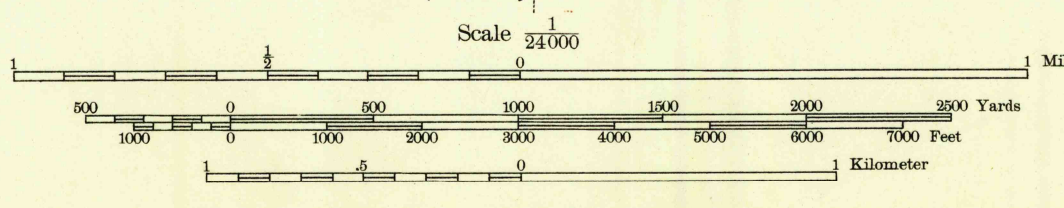
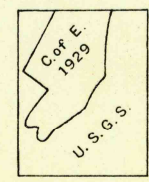
INDIANA
(VIGO COUNTY)
TERRE HAUTE QUADRANGLE
7 1/2-MINUTE SERIES



Topography by Crawford Dickey and
Corps of Engineers, U. S. Army
Surveyed in 1929 and 1938-39
Gray tint indicates areas in which only
landmark buildings are shown

ROAD CLASSIFICATION
1944
Dependable hard-surface road
Heavy-duty road
Secondary hard-surface road
All-weather road
More than two lanes indicated along road with tick at point of change

APPROXIMATE MEAN
DECLINATION, 1939



Contour interval 10 feet
Datum is mean sea level

USGS
Historical File
Topographic Division

U. S. G. S.
FILE COPY
Inspection and Editing.

TERRE HAUTE, IND.
Edition of 1948
N 3922.5-W 8722.5/7.5

FEB 25 1948

3170