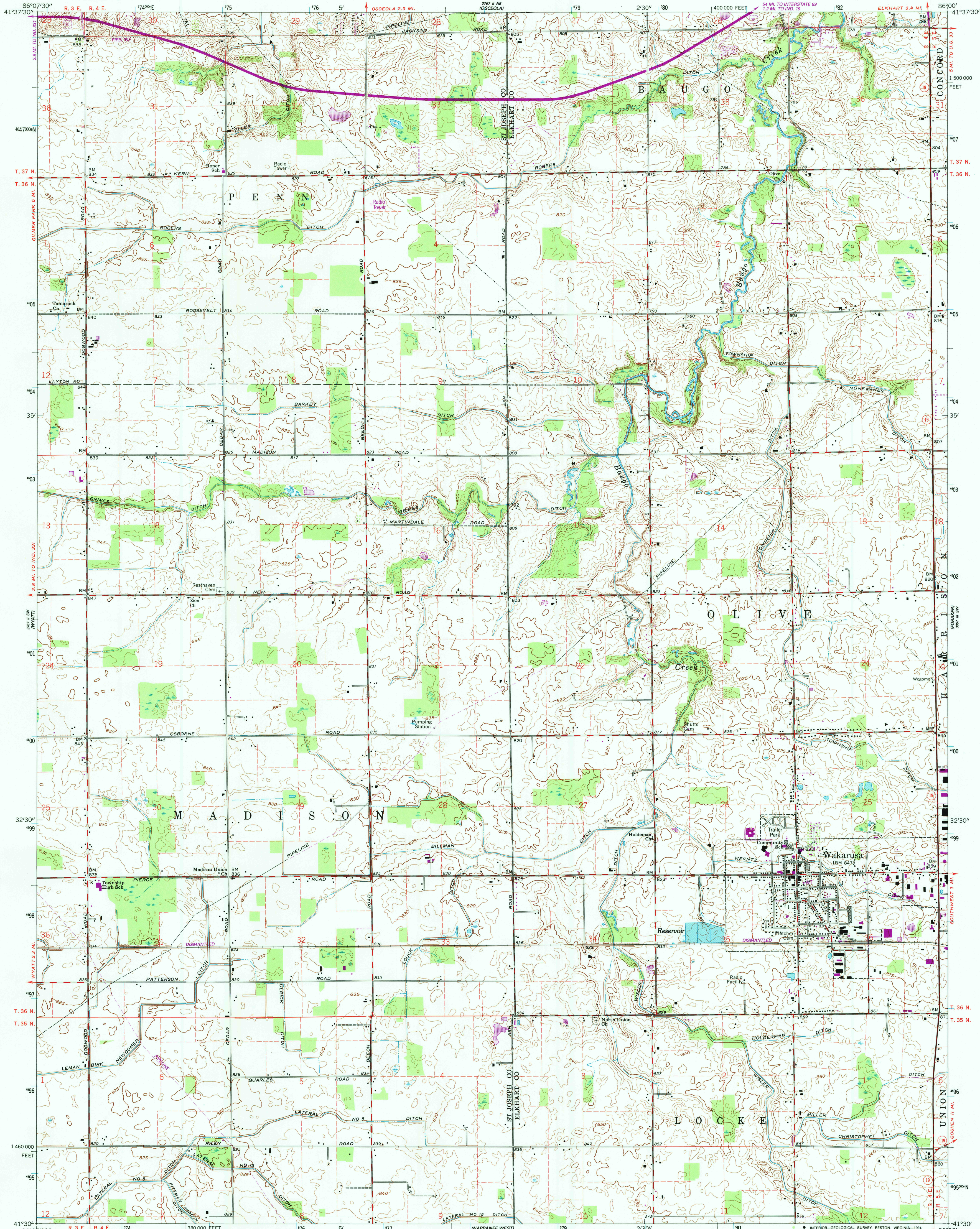


UNITED STATES
DEPARTMENT OF THE INTERIOR
GEOLOGICAL SURVEY

WAKARUSA QUADRANGLE
INDIANA
7.5 MINUTE SERIES (TOPOGRAPHIC)



Produced by the United States Geological Survey

Control by USGS and NGS/NOAA

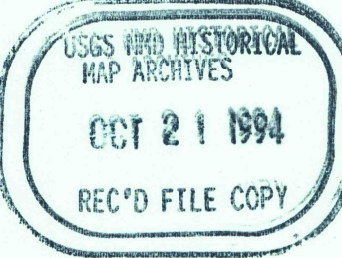
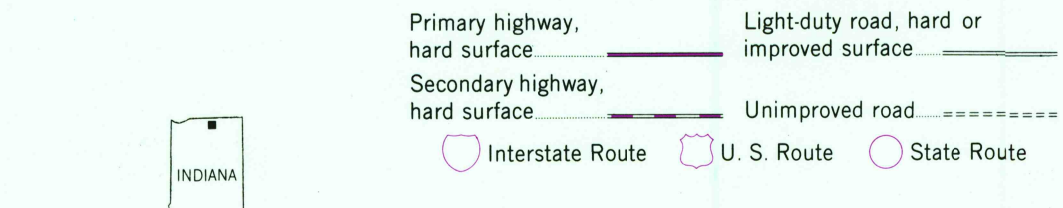
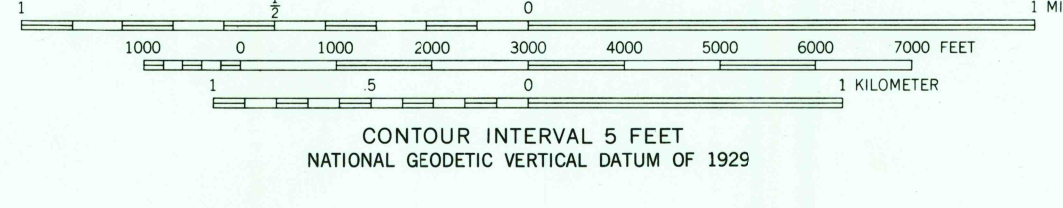
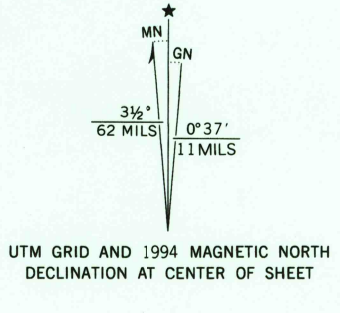
Topography by photogrammetric methods from aerial photographs taken 1958. Field checked 1961

Projection and 10,000-foot grid ticks: Indiana coordinate system, east zone (transverse Mercator)

1000-meter Universal Transverse Mercator grid ticks, zone 16, shown in blue 1927 North American Datum (NAD 27)

North American Datum of 1983 (NAD 83) is shown by dashed corner ticks. The values of the shift between NAD 27 and NAD 83 for 7.5-minute intersections are given in USGS Bulletin 1875

Fine red dashed lines indicate selected fence and field lines where generally visible on aerial photographs. This information is unchecked



THIS MAP COMPLIES WITH NATIONAL MAP ACCURACY STANDARDS
FOR SALE BY U.S. GEOLOGICAL SURVEY, DENVER, COLORADO 80225 OR RESTON, VIRGINIA 22092,
AND INDIANA DEPARTMENT OF NATURAL RESOURCES, INDIANAPOLIS, INDIANA 46204
A FOLDER DESCRIBING TOPOGRAPHIC MAPS AND SYMBOLS IS AVAILABLE ON REQUEST

Revisions shown in purple compiled from aerial photographs taken 1992 and other sources. This information not field checked. Map edited 1994
Information shown in purple may not meet USGS content standards and may conflict with previously mapped contours

WAKARUSA, IND.
41086-E1-TF-024
1961
REVISED 1994
DMA 3767 II SE-SERIES V851