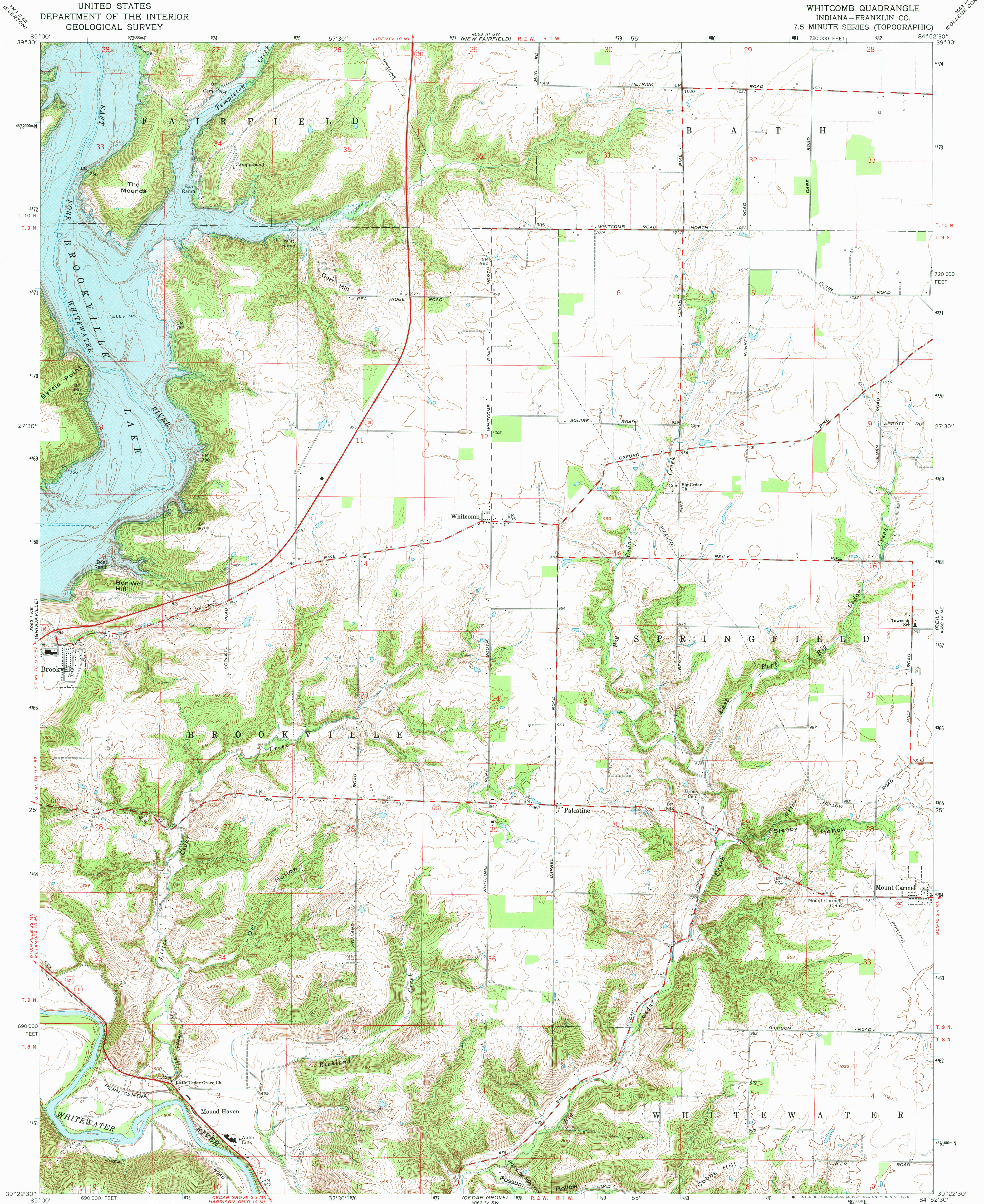


UNITED STATES  
DEPARTMENT OF THE INTERIOR  
GEOLOGICAL SURVEY

WHITCOMB QUADRANGLE  
INDIANA—FRANKLIN CO.  
7.5 MINUTE SERIES (TOPOGRAPHIC)



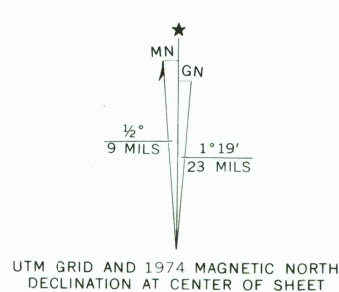
Mapped, edited, and published by the Geological Survey  
Revised in cooperation with Indiana Department  
of Natural Resources

Control by USGS, NOS/NOAA, USCE, and Indiana Flood Control and  
Water Resources Commission

Topography by photogrammetric methods from aerial photographs  
taken 1954. Field checked 1955. Revised from aerial  
photographs taken 1973. Field checked 1974

Polyconic projection. 1927 North American datum  
10,000-foot grid based on Indiana coordinate system, east zone  
1000-metre Universal Transverse Mercator grid ticks,  
zone 16, shown in blue

Fine red dashed lines indicate selected fence and field lines where  
generally visible on aerial photographs. This information is unchecked  
Areas covered by dashed light-blue pattern are subject to  
controlled inundation



THIS MAP COMPLIES WITH NATIONAL MAP ACCURACY STANDARDS  
FOR SALE BY U.S. GEOLOGICAL SURVEY, RESTON, VIRGINIA 22092  
AND INDIANA DEPARTMENT OF NATURAL RESOURCES, INDIANAPOLIS, INDIANA 46204  
A FOLDER DESCRIBING TOPOGRAPHIC MAPS AND SYMBOLS IS AVAILABLE ON REQUEST

ROAD CLASSIFICATION  
Primary highway, hard surface  
Secondary highway, hard surface  
Unimproved road  
Interstate Route  
U.S. Route  
State Route

WHITCOMB, IND.  
(FORMERLY MOUNT CARMEL)  
N3922.5—W8452.5/7.5

1974

AMS 4062 IV NW—SERIES V851

USGS  
HISTORICAL FILE  
TOPOGRAPHIC DIVISION

AUG 29 1975

3102