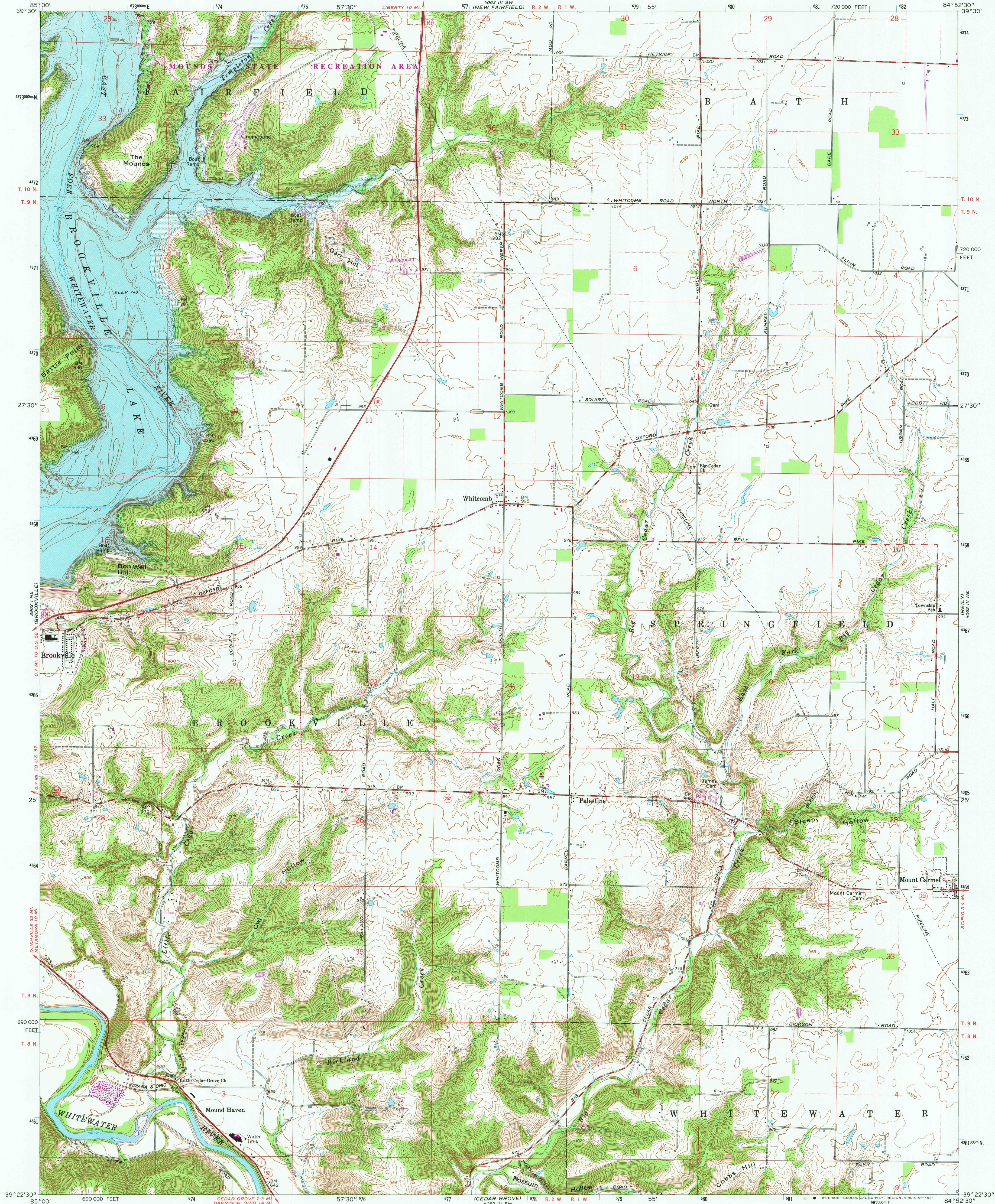


UNITED STATES  
DEPARTMENT OF THE INTERIOR  
GEOLOGICAL SURVEY

WHITCOMB QUADRANGLE  
INDIANA—FRANKLIN CO.  
7.5 MINUTE SERIES (TOPOGRAPHIC)



Mapped, edited, and published by the Geological Survey  
Revised in cooperation with Indiana Department  
of Natural Resources

Control by USGS, NOS/NOAA, USCE, and Indiana Flood Control and  
Water Resources Commission

Topography by photogrammetric methods from aerial photographs  
taken 1954. Field checked 1955. Revised from aerial  
photographs taken 1973. Field checked 1974

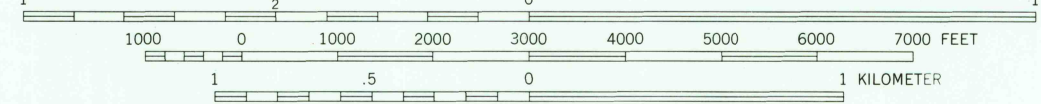
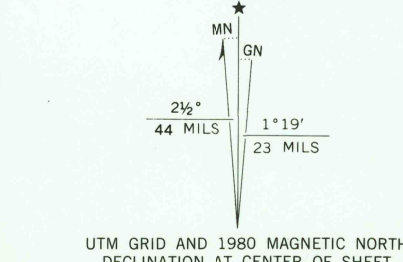
Polycyclic projection  
10,000-foot grid based on Indiana coordinate system, east zone

1000-meter Universal Transverse Mercator grid ticks,  
zone 16, shown in blue. 1927 North American Datum

To place on the predicted North American Datum 1983  
move the projection lines 2 meters south and

4 meters west as shown by dashed corner ticks

Fine dashed lines indicate selected fence and field lines where  
generally visible on aerial photographs. This information is unchecked



CONTOUR INTERVAL 10 FEET  
NATIONAL GEODETIC VERTICAL DATUM OF 1929

THIS MAP COMPLIES WITH NATIONAL MAP ACCURACY STANDARDS  
FOR SALE BY U. S. GEOLOGICAL SURVEY, RESTON, VIRGINIA 22092  
AND INDIANA DEPARTMENT OF NATURAL RESOURCES, INDIANAPOLIS, INDIANA 46204  
A FOLDER DESCRIBING TOPOGRAPHIC MAPS AND SYMBOLS IS AVAILABLE ON REQUEST



USGS  
HISTORICAL FILE  
NATIONAL MAPPING DIVISION

WHITCOMB, IND.  
(FORMERLY MOUNT CARMEL)  
N3922.5—W8452.5/7.5

Revisions shown in purple compiled in cooperation with State  
of Indiana agencies from aerial photographs taken 1978 and other  
source data. This information not field checked. Map edited 1980

1974  
PHOTOREVISED 1980  
DMA 4062 IV NW—SERIES V851

MAY 28 1981  
3650