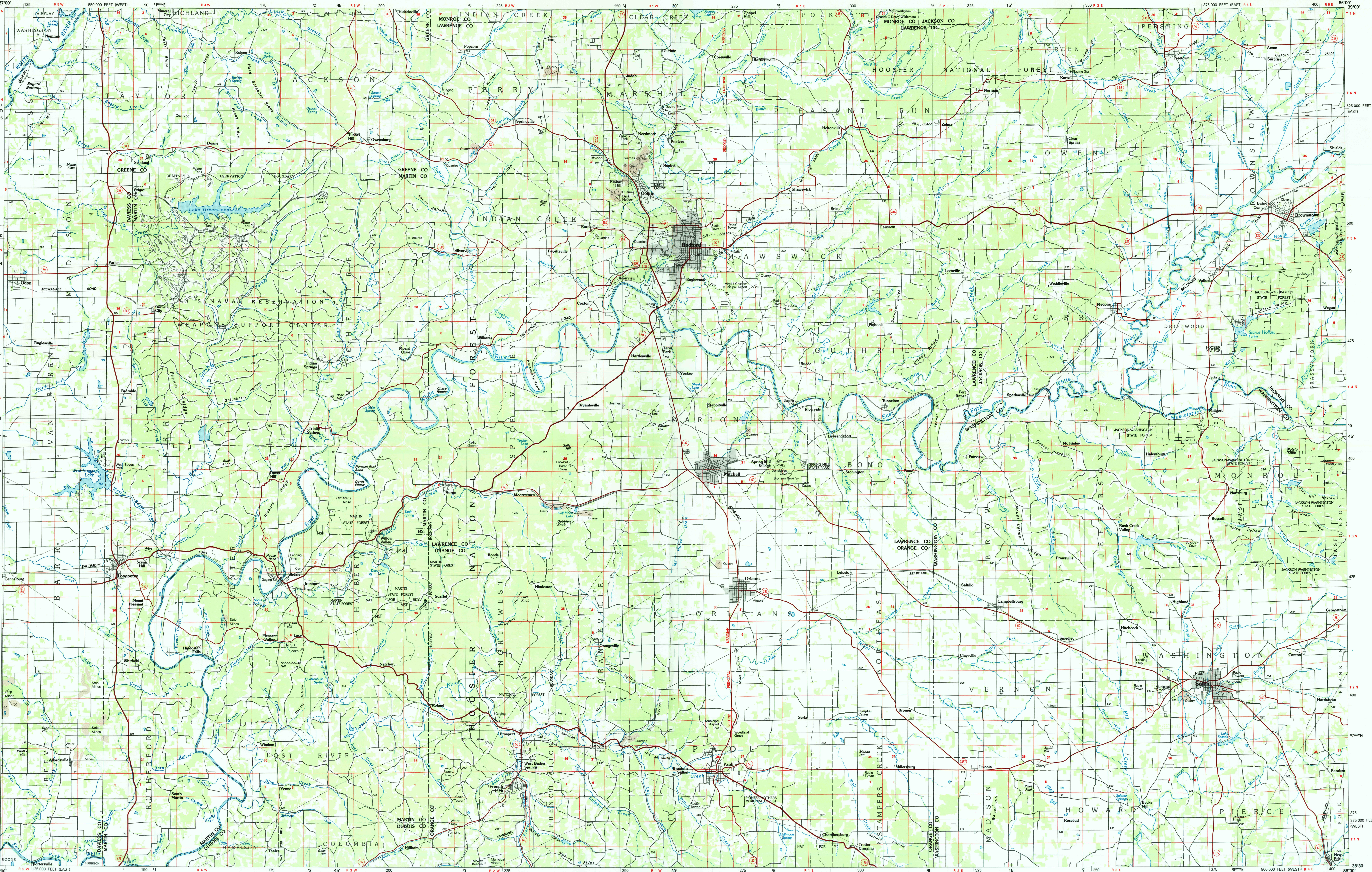


BEDFORD, INDIANA



Bedford  
INDIANA

1:100 000-scale  
planimetric map



30 X 60 MINUTE QUADRANGLE  
SHOWING

- Elevations in meters
- Highways, roads and other manmade structures
- Water features
- Woodland areas
- Geographic names



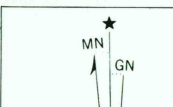
GEOLOGICAL SURVEY

1986

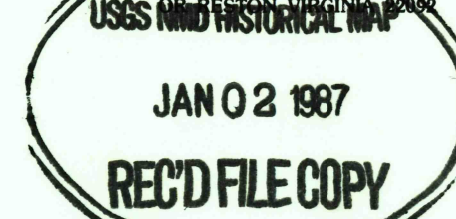
Produced by the United States Geological Survey  
Compiled from USGS 1:24 000-scale topographic maps  
dated 1959-1981. Planimetry revised from aerial  
photographs taken 1978 and 1983 and other source data.  
Revised information not field checked.  
Map edited 1986.  
Projection and 10 000-meter grid, zone 16  
Universal Transverse Mercator  
25 000-foot grid ticks based on Indiana coordinate  
system, east and west zones. 1927 North American Datum  
To place on the predicted North American Datum 1983 move  
the projection lines 2 meters south.  
These may be private inholdings within the boundaries of  
the National or State reservations shown on this map.

NATIONAL GEODETIC VERTICAL DATUM OF 1929  
ELEVATIONS SHOWN TO THE NEAREST METER

THIS MAP COMPLIES WITH NATIONAL MAP ACCURACY STANDARDS

CONVERSION TABLE		DECLINATION DIAGRAM		ADJOINING MAPS			
Meters	Feet			1	2	3	
1	3.2808						
2	6.5617						
3	9.8425						
4	13.1234						
5	16.4042						
6	19.6850						
7	22.9659						
8	26.2467						
9	29.5276						
10	32.8084						
To convert meters to feet multiply by 3.2808		UTM grid convergence (GN) and 1988 magnetic declination (MN) at center of map		1 Terre Haute 2 Bloomington 3 Greensburg 4 Indianes 5 Madison 6 Princeton 7 Jasper 8 Louisville			
To convert feet to meters multiply by 0.3048		Diagram is approximate					

FOR SALE BY U.S. GEOLOGICAL SURVEY, DENVER, COLORADO 80225



Topographic Map Symbols

Primary highway, hard surface	
Secondary highway, hard surface	
Light duty road, principal street, hard or improved surface	
Other road or street; trail	
Route marker; Interstate, U. S. State	
Railroad; standard gage; narrow gage	
Bridge; overpass; underpass	
Tunnel; road; railroad	
Built up area; locality; elevation	
Airport; landing field; landing strip	
National boundary	
State boundary	
County boundary	
National or State reservation boundary	
Land grant boundary	
U. S. public lands survey; range, township, section	
Range, township, section line; protruded	
Power transmission line; pipeline	
Dam; dam with lock	
Cemetery; building	
Windmill; water well; spring	
Mine shaft; adit or ore; mine; quarry; gravel pit	
Campground; picnic area; U. S. location monument	
Ruins; cliff dwelling	
Distorted surface; strip mine, lava; sand	
Contours: index; intermediate; supplementary	
Bathymetric contours: index; intermediate	
Stream; lake; perennial; intermittent	
Rapids; large and small; falls; large and small	
Area to be submerged; marsh; swamp	
Land subject to controlled inundation; woodland	
Scrub; mangrove	
Orchard; vineyard	

A pamphlet describing topographic maps is available on request

BEDFORD, INDIANA  
38086-E1-PL-100

1986