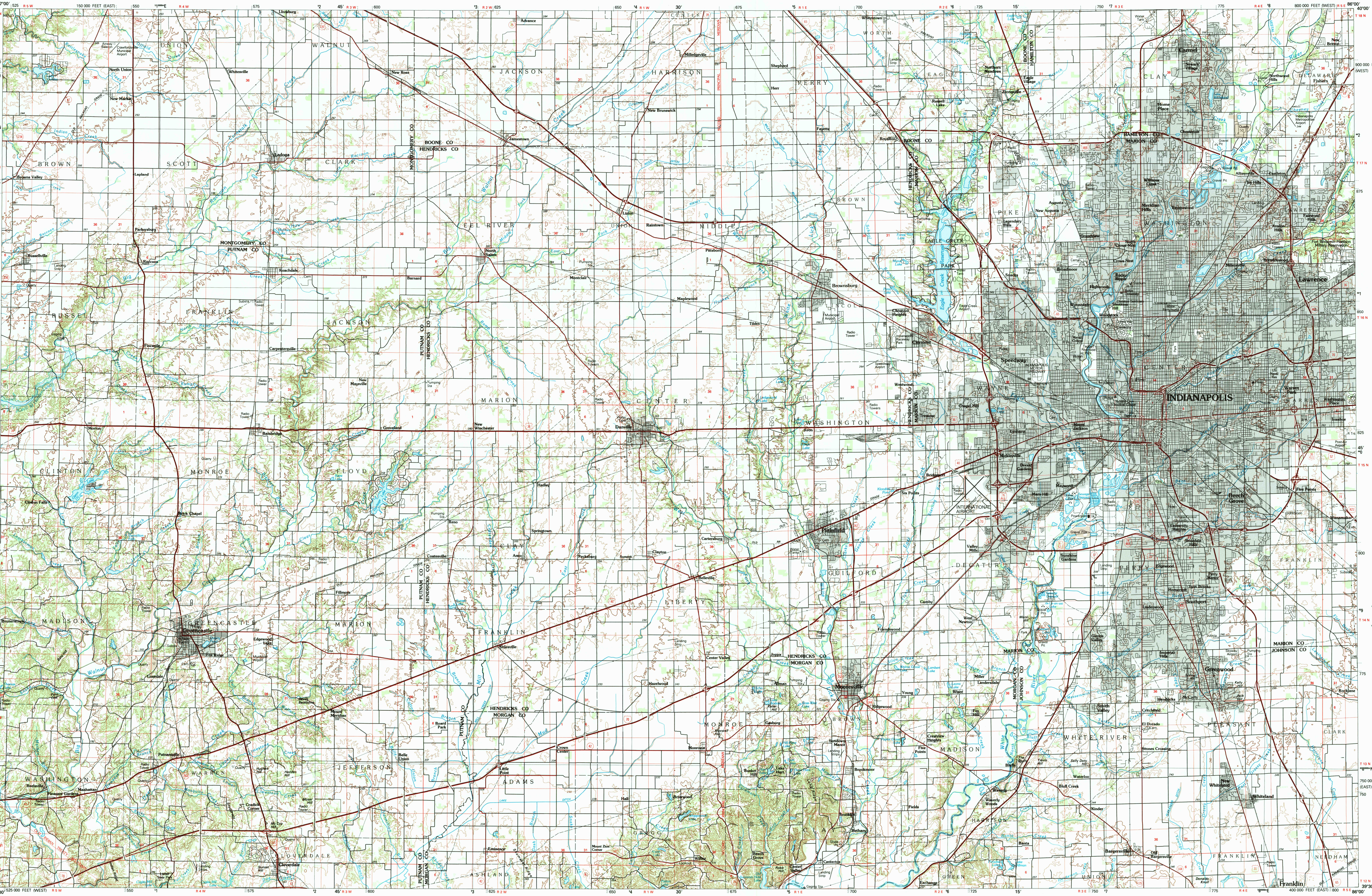
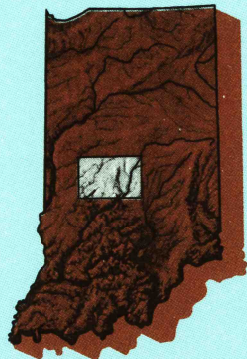


INDIANAPOLIS, INDIANA



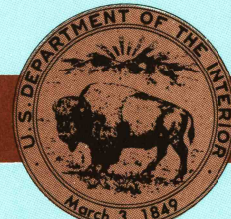
Indianapolis  
INDIANA

1:100 000-scale metric  
topographic map



30 X 60 MINUTE QUADRANGLE  
SHOWING

- Contours and elevations in meters
- Highways, roads and other manmade structures
- Water features
- Woodland areas
- Geographic names



GEOLOGICAL SURVEY

1986

Produced by the United States Geological Survey

Compiled from USGS 1:24 000-scale topographic maps dated 1956-1973. Planimetry revised from aerial photographs taken 1984 and other source data. Revised information not field checked. Map edited 1986.  
Projection and 10 000-meter grid, zone 16  
Universal Transverse Mercator  
25 000-foot grid ticks based on Indiana coordinate system, west and east zones. 1927 North American Datum. To place on the predicted North American Datum 1983 move the projection lines 1 meter south.  
There may be private inholdings within the boundaries of the National or State reservations shown on this map.

CONTOUR INTERVAL 10 METERS  
NATIONAL GEODETIC VERTICAL DATUM OF 1929  
ELEVATIONS SHOWN TO THE NEAREST METER

THIS MAP COMPLIES WITH NATIONAL MAP ACCURACY STANDARDS

CONVERSION TABLE		DECLINATION DIAGRAM	ADJOINING MAPS			
Meters	Feet		1	2	3	
2	6 561		4	5		
4	13 122		6	7	8	
6	19 683					
8	26 244					
10	32 805					
To convert meters to feet multiply by 3.2808		UTM grid convergence (GN and 1983 magnetic declination (MD) at center of map. Diagram is approximate.				
To convert feet to meters multiply by 0.3048						

- Danville
- Lafayette
- Muncie
- Paris
- New Castle
- Terre Haute
- Bloomington
- Greensburg

FOR STATE OF INDIANA, GEOLOGICAL SURVEY, DENVER, COLORADO 80225  
OR RESTON, VIRGINIA 22092

USGS NHD HISTORICAL MAP  
SEP 11 1989  
REC'D FILE COPY

Topographic Map Symbols

- Primary highway, hard surface
- Secondary highway, hard surface
- Light duty road, principal street, hard or improved surface
- Other road or street; trail
- Route marker: Interstate; U. S.; State
- Railroad: standard gauge; narrow gauge
- Bridge: overpass; underpass
- Tunnel: road; railroad
- Built up area; locality; elevation
- Airport; landing field; landing strip
- National boundary
- State boundary
- County boundary
- National or State reservation boundary
- Land grant boundary
- U. S. public lands survey: range, township, section
- Range, township, section line: protracted
- Power transmission line; pipeline
- Dam; dam with lock
- Cemetery; building
- Windmill; water well; spring
- Mine shaft; adit or cave; mine, quarry; gravel pit
- Recreational area; picnic area; U. S. location monument
- River; cliff dwelling
- Distorted surface: strip mine; lava; sand
- Contours: index; intermediate; supplementary
- Bathymetric contours: index; intermediate
- Stream, lake; perennial; intermittent
- Roads, large and small; mile, half mile, and quarter mile
- Area to be submerged; marsh; swamp
- Land subject to controlled inundation; woodland
- Scrub; mangrove
- Orchard; vineyard

A pamphlet describing topographic maps is available on request

INDIANAPOLIS, INDIANA  
39086-E1-TM-100  
1986