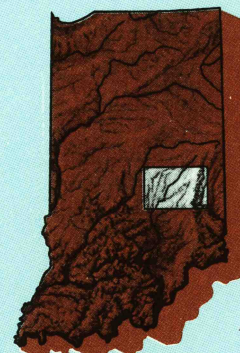


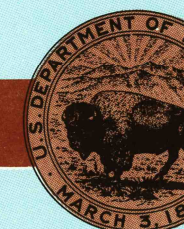
New Castle
INDIANA

1:100 000-scale metric
topographic map



30 X 60 MINUTE QUADRANGLE
SHOWING

- Contours and elevations in meters
- Highways, roads and other manmade structures
- Water features
- Woodland areas
- Geographic names



GEOLOGICAL SURVEY

1986
PHOTOINSPECTED 1987

Produced by the United States Geological Survey

Compiled from USGS 1:24 000-scale topographic maps dated 1956-1972. Planimetry revised from aerial photographs taken 1983-84 and other source data. Revised information not field checked. Map edited 1986.

Projection and 10 000-meter grid, zone 16 Universal Transverse Mercator. 25 000-foot grid ticks based on Indiana coordinate system, east zone. 1927 North American Datum. To place on the predicted North American Datum 1983 move the projection lines 2 meters south and 3 meters west. There may be private inholdings within the boundaries of the National or State reservations shown on this map. Map photoinspected using 1987 photographs. No major culture or drainage changes found.

CONTOUR INTERVAL 10 METERS
NATIONAL GEODETIC VERTICAL DATUM OF 1929
ELEVATIONS SHOWN TO THE NEAREST METER

THIS MAP COMPLIES WITH NATIONAL MAP ACCURACY STANDARDS

CONVERSION TABLE	
Meters	Feet
1	3.2808
2	6.5617
3	9.8425
4	13.1234
5	16.4042
6	19.6850
7	22.9659
8	26.2467
9	29.5276
10	32.8084

To convert meters to feet multiply by 3.2808
To convert feet to meters multiply by 0.3048

DECLINATION DIAGRAM	
M	D
33	17
34	18
35	19
36	20
37	21
38	22
39	23
40	24

UTM grid convergence (IGM and 1983 magnetic declination (MD) at center of map Diagram is approximate

ADJOINING MAPS	
1	2
3	4
5	6
7	8

1 Lafayette
2 Madison
3 Plaquemine
4 Dayton
5 Bloomington
6 Greensburg
7 Cincinnati

FOR SALE BY U.S. GEOLOGICAL SURVEY, DENVER, COLORADO 80225 OR RESTON, VIRGINIA 22092

USGS NMHD HISTORICAL MAP

MAR 27 1981

REC'D FILE COPY

Topographic Map Symbols

- Primary highway, hard surface
- Secondary highway, hard surface
- Light duty road, principal street, hard or improved surface
- Other road or street, rail
- Route marker: Interstate, U.S., State
- Railroad: standard gage, narrow gage
- Bridge: overpass, underpass
- Tunnel: road, railroad
- Built up area, locality, elevation
- Airport, landing field, landing strip
- National boundary
- State boundary
- County boundary
- National or State reservation boundary
- Land grant boundary
- U.S. public lands survey: range, township, section
- Range, township, section line: projected
- Power transmission line, pipeline
- Dam: dam with lock
- Cemetery, building
- Well: water well, spring
- Mine shaft, adit or cave, mine, quarry, gravel pit
- Campground, picnic area, U.S. location monument
- Ruins: cliff dwelling
- Distorted surface: strip mine, lava, sand
- Contours: index, intermediate, supplementary
- Bathymetric contours: index, intermediate
- Stream, lake: perennial, intermittent
- Rapids, large and small; falls, large and small
- Area to be submerged: marsh, swamp
- Land subject to controlled inundation, woodland
- Scrub, meadow
- Orchard, vineyard

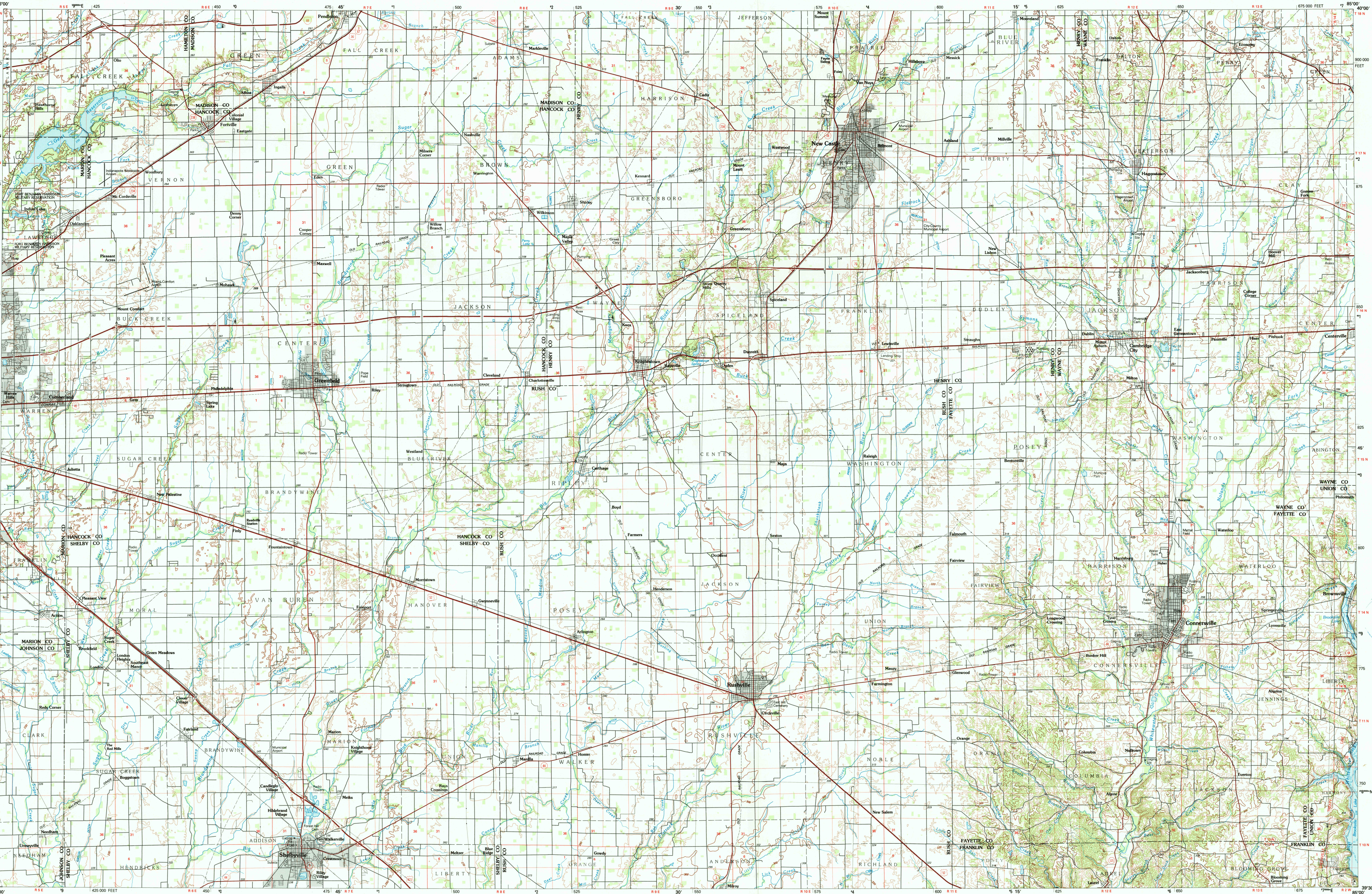
A pamphlet describing topographic maps is available on request

NEW CASTLE, INDIANA

39085-E1-TM-100

1986

PHOTOINSPECTED 1987



INTERIOR-GEOLOGICAL SURVEY, RESTON, VIRGINIA-1986

SCALE 1:100 000

1 CENTIMETER ON THE MAP REPRESENTS 1 KILOMETER ON THE GROUND

CONTOUR INTERVAL 10 METERS