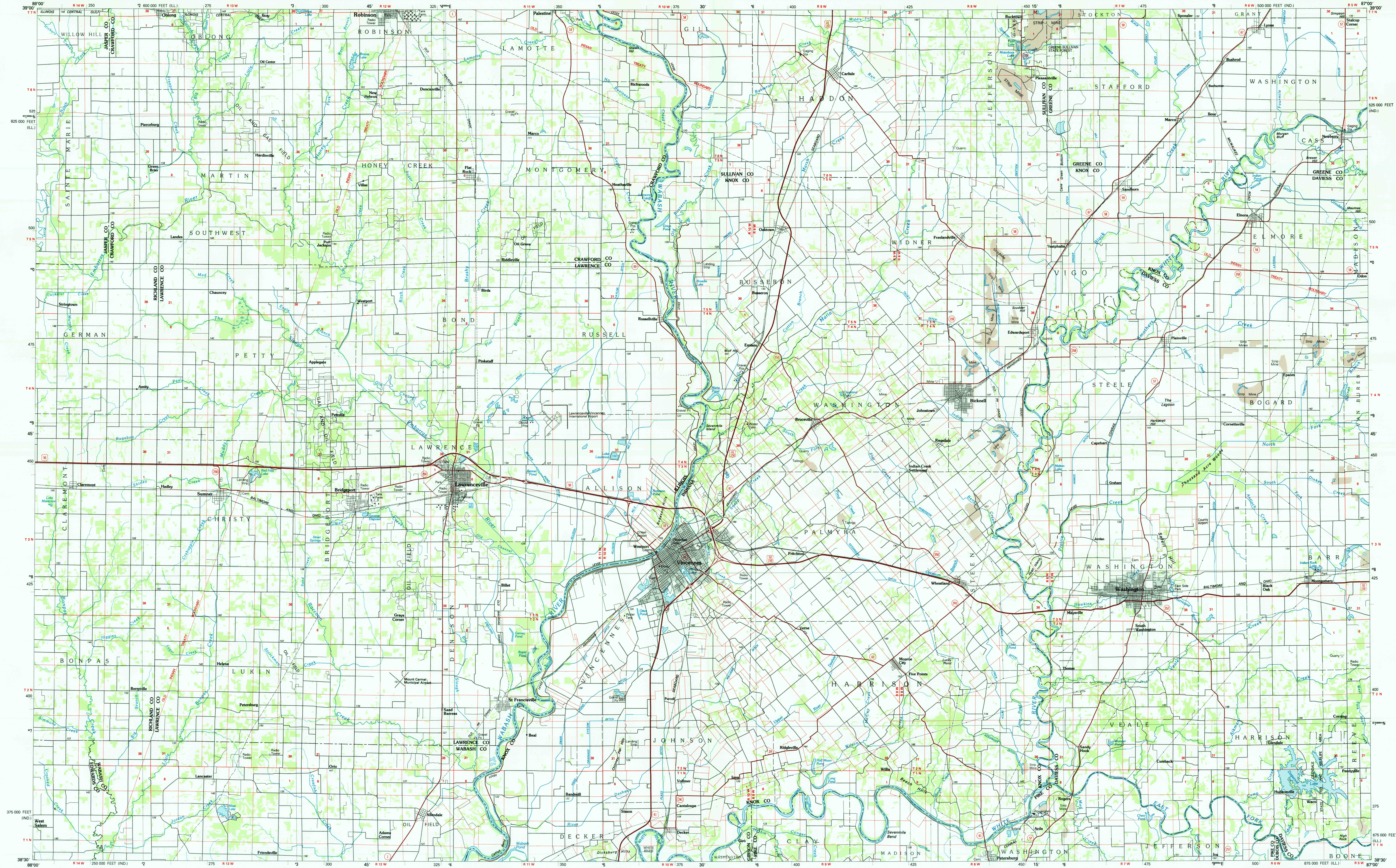


VINCENNES, INDIANA-ILLINOIS



Vincennes

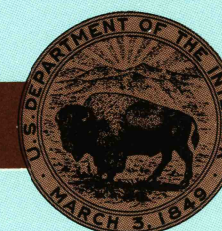
INDIANA-ILLINOIS

**1:100 000-scale
planimetric map**



**30 X 60 MINUTE QUADRANGLE
SHOWING**

- Elevations in meters
- Highways, roads and other manmade structures
- Water features
- Woodland areas
- Geographic names



GEOLOGICAL SURVEY

1986

Produced by the United States Geological Survey

Compiled from USGS 1:24,000-scale topographic maps dated 1964-1980. Planimetry revised from aerial photographs taken 1984 and other source data
Revised information not field checked
Map edited 1986

Projection and 10 000-meter grid, zone 16
Universal Transverse Mercator
25 000-foot grid ticks based on Indiana coordinate system, west zone and Illinois coordinate system east zone. 1927 North American Datum
To place on the predicted North American Datum 1983 move the projection lines 2 meters south and 2 meters east

There may be private inholdings within the boundaries of the National or State reservations shown on this map

NATIONAL GEODETIC VERTICAL DATUM OF 1929
ELEVATIONS SHOWN TO THE NEAREST METER

THIS MAP COMPLIES WITH NATIONAL MAP ACCURACY STANDARDS

Meters	Feet
1	3.2808
2	6.5617
3	9.8425
4	13.1234
5	16.4042
6	19.6850
7	22.9659
8	26.2467
9	29.5275
10	32.8084

DECLINATION DIAGRAM

UTM grid convergence (GN) and 1984 magnetic declination (MN) at center of map
Diagram is approximate

1	2	3
4	5	6
7	8	9

1 Effingham
2 Terre Haute
3 Bloomington
4 Joplin
5 Bedford
6 Mount Vernon
7 Princeton
8 Jasper

To convert meters to feet multiply by 3.2808
To convert feet to meters multiply by 0.3048

FOR SALE BY U. S. GEOLOGICAL SURVEY, DENVER, COLORADO 8022
OR RESTON, VIRGINIA 22092

Topographic Map Symbols

- | | |
|---|--|
| Primary highway, hard surface | |
| Secondary highway, hard surface | |
| Light duty road, principal street, hard or improved surface | |
| Other road or street; not paved | |
| Point mark: intersection, U. S. State | |
| Railroad: standard gage, narrow gage | |
| Railroad: overpass; underpass | |
| Tunnel: road; railroad | |
| Built up area; locality; elevation | |
| Airport: landing field; landing strip | |
| National boundary | |
| County boundary | |
| National or State reservation boundary | |
| Land grant boundary | |
| U. S. public lands survey: range, township; section | |
| Range, township; section line: protected | |
| Power transmission line: high voltage | |
| Power transmission line: local | |
| den with hut | |
| Cemetery; building | |
| Windmill; water well; spring | |
| Mine shaft; adit or cave; mine, quarry; gravel pit | |
| Campground; picnic area; U. S. location monument | |
| Ruins; old dwelling | |
| Disturbed surface: strip mine, lava sand | |
| Shaded area: intertidal; supplementary | |
| Bathymetric contours: index; intermediate | |
| Stream lake: perennial; intermittent | |
| Rapids, large and small; falls, large and small | |
| Area to be submerged; marsh, swamp | |
| Land subject to controlled inundation; woodland | |
| Scrub; mangrove | |

A pamphlet describing topographic maps is available on request.

VINCENNES, INDIANA-ILLINOIS

38087-E1-PL-100

1986