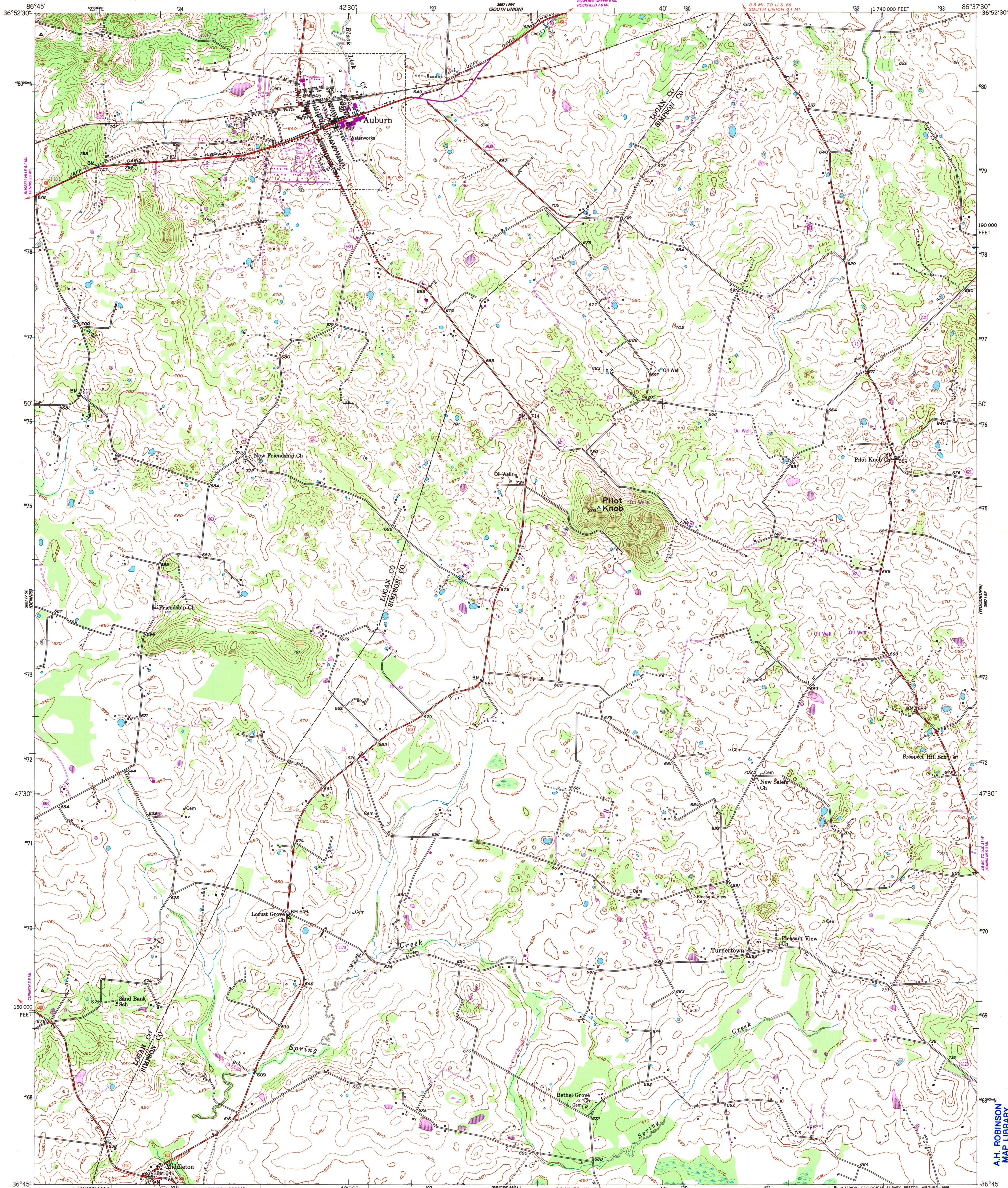
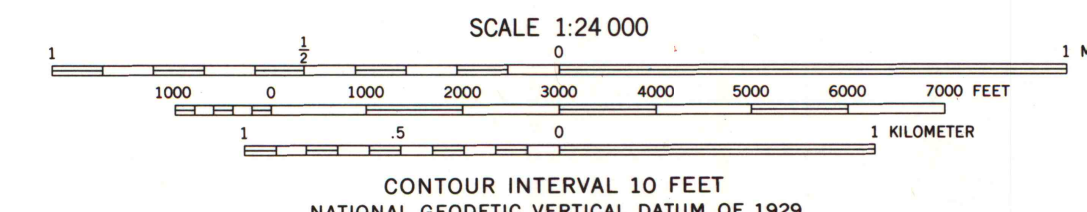
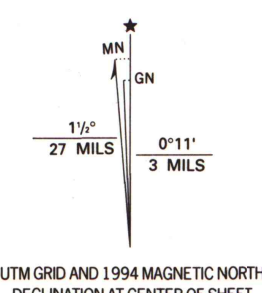


UNITED STATES
DEPARTMENT OF THE INTERIOR
GEOLOGICAL SURVEY

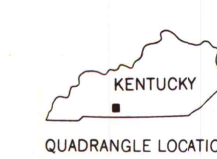
AUBURN QUADRANGLE
KENTUCKY
7.5 MINUTE SERIES (TOPOGRAPHIC)



Produced by the United States Geological Survey
Control by USGS and NOS/NOAA
Planimetry by photogrammetric methods from aerial photographs
taken 1950. Topography by planimetric surveys 1951.
North American Datum of 1927 (NAD 27). Projection and
10 000-foot ticks: Kentucky coordinate system, south zone
(Lambert conformal conic).
Blue 1000-meter Universal Transverse Mercator ticks, zone 16
North American Datum of 1983 (NAD 83) is shown by dashed
corner ticks. The values of the shift between NAD 27 and NAD 83
for 7.5-minute intersections are obtainable from National Geodetic
Survey NADCON software.



COMPLIES WITH U.S. GEOLOGICAL SURVEY STANDARDS FOR SPATIAL ACCURACY - CLASS 2
FOR SALE BY U.S. GEOLOGICAL SURVEY, DENVER, COLORADO 80225, OR RESTON, VIRGINIA 22092
KENTUCKY GEOLOGICAL SURVEY, LEXINGTON, KENTUCKY 40506
AND KENTUCKY DEPARTMENT OF COMMERCE, FRANKFORT, KENTUCKY 40601
A FOLDER DESCRIBING TOPOGRAPHIC MAPS AND SYMBOLS IS AVAILABLE ON REQUEST



ROAD CLASSIFICATION
Primary highway, hard surface
Secondary highway, hard surface
Light-duty road, hard or improved surface
Unimproved road
Interstate Route
U. S. Route
State Route

Revisions shown in purple compiled in cooperation with
State of Kentucky agencies from aerial photographs
taken 1991 and other sources. This information not
field checked. Map edited 1994
Information shown in purple may not meet USGS content
standards and may conflict with previously mapped contours

U.S. Regional
Depository Copy
DO NOT DISCARD

AUBURN, KY.
36086-G6-TF-024
1951
REVISED 1994
DMA 3657 1 SW-SERIES V853

A.H. ROBINSON
MAP LIBRARY
MAY 15 1995
University of Wisconsin
Madison