

4159 11 NW
MORGAN

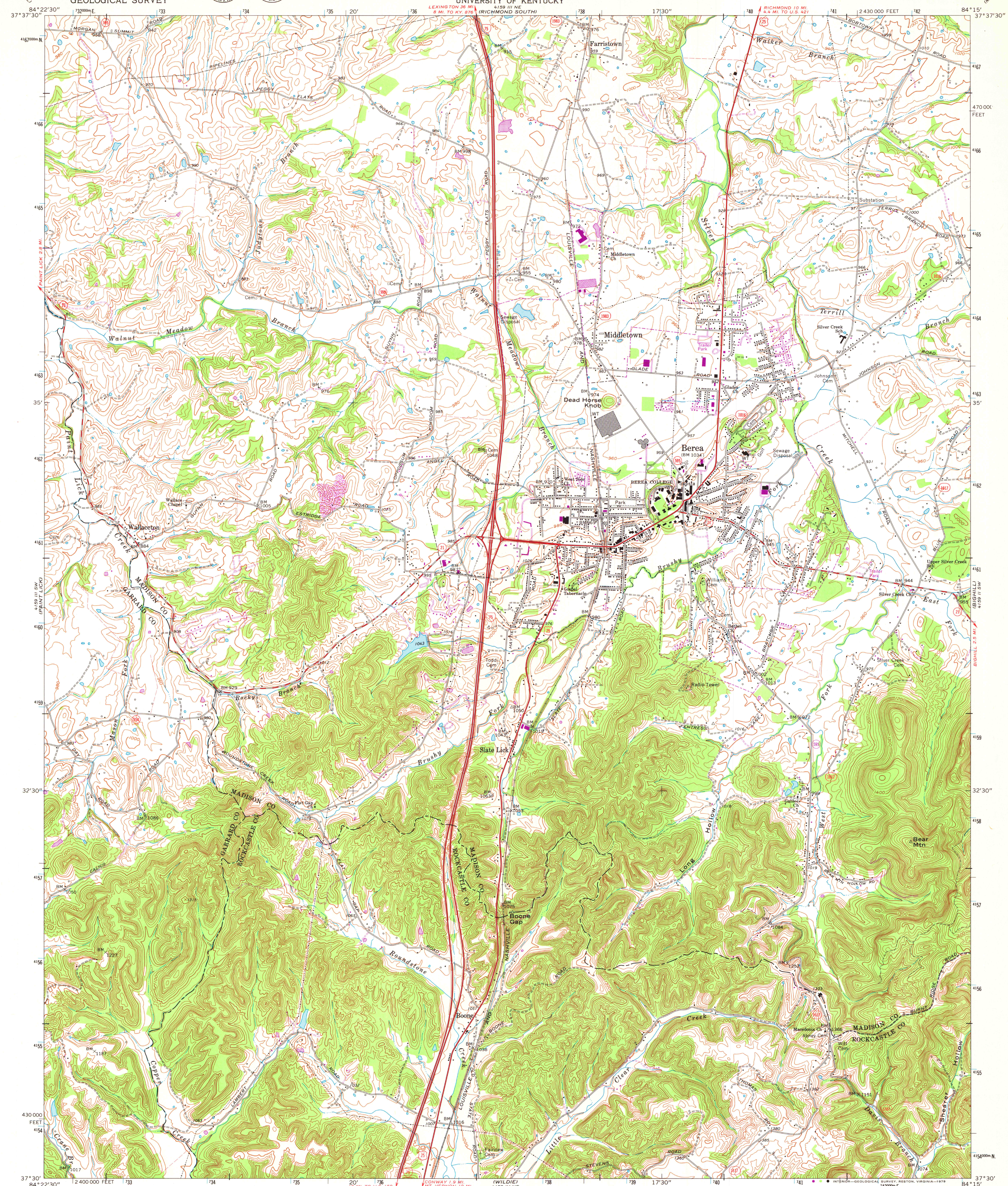
UNITED STATES
DEPARTMENT OF THE INTERIOR
GEOLOGICAL SURVEY



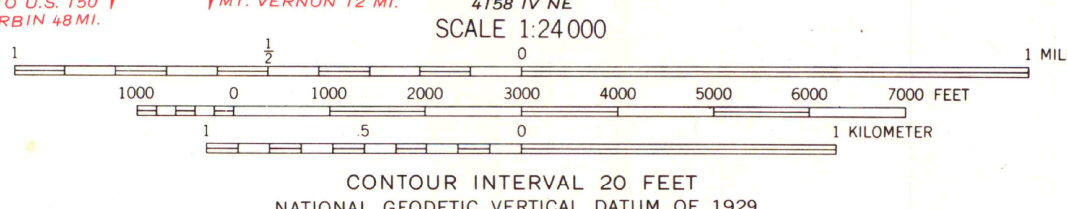
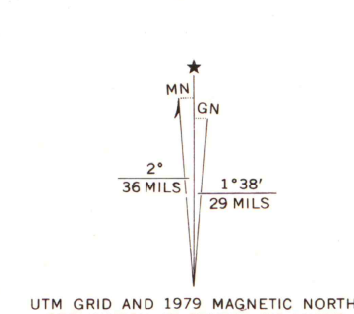
STATE OF KENTUCKY
KENTUCKY GEOLOGICAL SURVEY
UNIVERSITY OF KENTUCKY

BEREA QUADRANGLE
KENTUCKY
7.5 MINUTE SERIES (TOPOGRAPHIC)

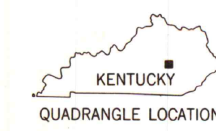
4159 11 NW
MOBERLY



Maped, edited, and published by the Geological Survey
Control by USGS, USC&GS, and Kentucky Geodetic Survey
Topography by photogrammetric methods from aerial photographs
taken 1950. Field checked 1952. Revised from aerial
photographs taken 1969. Field checked 1970
Polyconic projection. 1927 North American datum
10,000-foot grid based on Kentucky coordinate system, south zone
1000-meter Universal Transverse Mercator grid ticks, zone 16,
shown in blue
Fine red dashed lines indicate selected fence and field lines where
generally visible on aerial photographs. This information is unchecked
Revisions shown in purple and woodland
compiled from aerial photographs taken 1976
and other source data. Contours adjusted adjacent
to certain photorevised hydrographic features.
This information not field checked. Map edited 1979



THIS MAP COMPLIES WITH NATIONAL MAP ACCURACY STANDARDS
FOR SALE BY U.S. GEOLOGICAL SURVEY, RESTON, VIRGINIA 22092
KENTUCKY GEOLOGICAL SURVEY, LEXINGTON, KENTUCKY 40506
AND KENTUCKY DEPARTMENT OF COMMERCE, FRANKFORT, KENTUCKY 40601
A FOLDER DESCRIBING TOPOGRAPHIC MAPS AND SYMBOLS IS AVAILABLE ON REQUEST



ROAD CLASSIFICATION
Primary highway, hard surface
Secondary highway, hard surface
Interstate Route
U. S. Route
Slate Route
Light-duty road, hard or improved surface
Unimproved road
MAP AND AIR PHOTO LIBRARY
BEREA, KY.
SEP 17 1979
N3730-W8415/7.5
1970
PHOTOREVISED 1979
AMS 4159 III SE-SERIES V853
University of Wisconsin
Madison