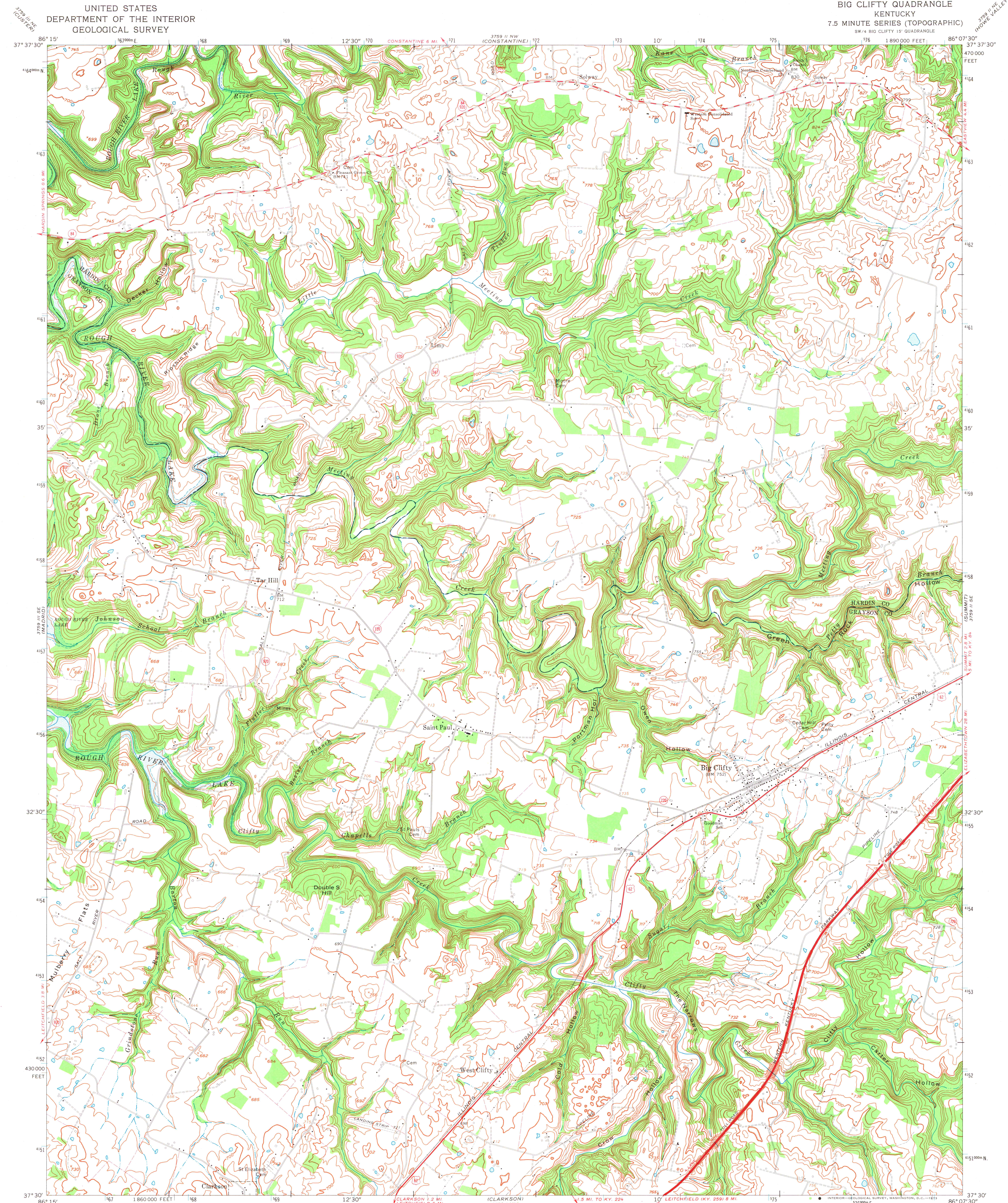


UNITED STATES
DEPARTMENT OF THE INTERIOR
GEOLOGICAL SURVEY

BIG CLIFTY QUADRANGLE
KENTUCKY
7.5 MINUTE SERIES (TOPOGRAPHIC)
SW 1/4 BIG CLIFTY 15' QUADRANGLE

3759 II NE
(HOVE ALLEY)



Mapped by the Army Map Service
Edited and published by the Geological Survey
Revised by the Geological Survey in cooperation
with the Kentucky Geological Survey

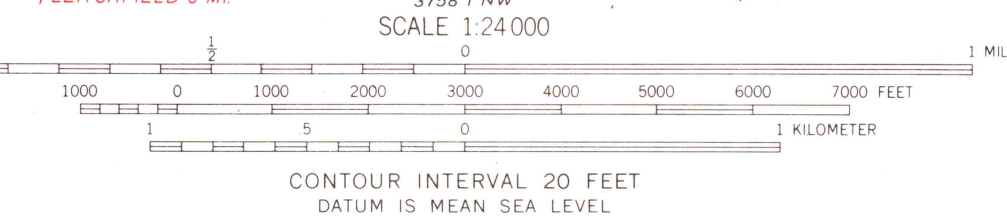
Control by USGS, USC&GS, and USCE
Topography by photogrammetric methods from aerial
photographs taken 1947. Field checked 1949
Revised from aerial photographs taken 1972. Field checked 1972

Polyconic projection. 1927 North American datum
10,000-foot grid based on Kentucky coordinate system, south zone
1000-meter Universal Transverse Mercator grid ticks,
zone 16, shown in blue

Fine red dashed lines indicate selected fence and field lines where
generally visible on aerial photographs. This information is unchecked

Areas covered by dashed light blue pattern are
subject to controlled inundation to 524 feet

UTM GRID AND 1972 MAGNETIC NORTH
DECLINATION AT CENTER OF SHEET



THIS MAP COMPLIES WITH NATIONAL MAP ACCURACY STANDARDS
FOR SALE BY U.S. GEOLOGICAL SURVEY, WASHINGTON, D.C. 20242,
KENTUCKY GEOLOGICAL SURVEY, LEXINGTON, KENTUCKY 40506,
AND KENTUCKY DEPARTMENT OF COMMERCE, FRANKFORT, KENTUCKY 40601
A FOLDER DESCRIBING TOPOGRAPHIC MAPS AND SYMBOLS IS AVAILABLE ON REQUEST



MAP AND AIR PHOTO
LIBRARY

NOV 21 1973

University of Wisconsin

BIG CLIFTY, KY.
SW 1/4 BIG CLIFTY 15' QUADRANGLE
N3730-W8607.5/7.5

1972

AMS 3759 II SW-SERIES Y853