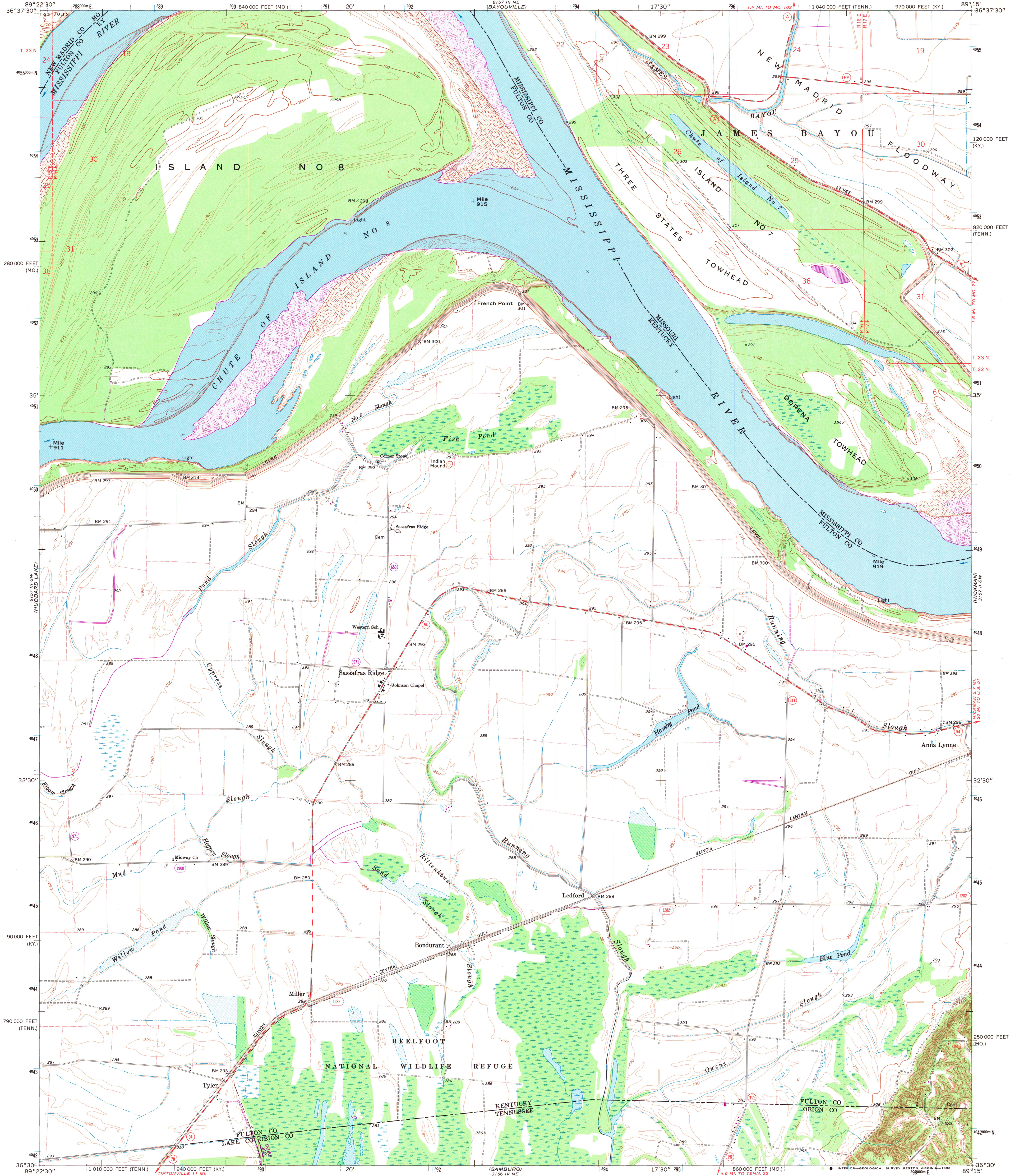
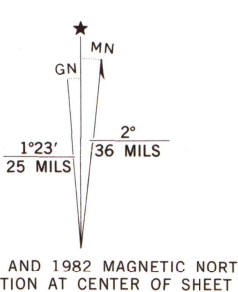


UNITED STATES  
DEPARTMENT OF THE INTERIOR  
GEOLOGICAL SURVEY

BONDURANT QUADRANGLE  
KENTUCKY—MISSOURI—TENNESSEE  
7.5 MINUTE SERIES (TOPOGRAPHIC)  
SE/4 BAYOUVILLE 15' QUADRANGLE



Mapped, edited, and published by the Geological Survey  
in cooperation with the State of Kentucky  
Control by USGS, NOS/NOAA, and USCE  
Planimetry by photogrammetric methods from aerial photographs  
taken 1950. Topography by planimetric surveys 1950-51.  
Revised from aerial photographs taken 1967. Field checked 1969.  
Polyconic projection. 10,000-foot grid ticks based on Kentucky  
coordinate system, south zone, Missouri coordinate system,  
east zone, and Tennessee coordinate system. 1000-meter  
Universal Transverse Mercator grid ticks, zone 16,  
shown in blue. 1927 North American Datum. To place  
on the predicted North American Datum 1983 move the  
projection lines 5 meters south and 6 meters east as shown  
by dashed corner ticks.  
Fine red dashed lines indicate selected fence and field lines where  
generally visible on aerial photographs. This information is unchecked.  
There may be private inholdings within the boundaries of  
the National or State reservations shown on this map.



SCALE 1:24,000  
CONTOUR INTERVAL 5 FEET  
NATIONAL GEODETIC VERTICAL DATUM OF 1929

THIS MAP COMPLIES WITH NATIONAL MAP ACCURACY STANDARDS  
FOR SALE BY U. S. GEOLOGICAL SURVEY, DENVER, COLORADO 80225, OR RESTON, VIRGINIA 22092,  
DIVISION OF GEOLOGY AND LAND SURVEY  
MISSOURI DEPARTMENT OF NATURAL RESOURCES, ROLLA, MISSOURI 65401,  
KENTUCKY GEOLOGICAL SURVEY, LEXINGTON, KENTUCKY 40506,  
KENTUCKY DEPARTMENT OF COMMERCE, FRANKFORT, KENTUCKY 40601,  
AND TENNESSEE DEPARTMENT OF CONSERVATION, DIVISION OF GEOLOGY, NASHVILLE, TENN. 37219  
A FOLDER DESCRIBING TOPOGRAPHIC MAPS AND SYMBOLS IS AVAILABLE ON REQUEST

ROAD CLASSIFICATION  
Secondary highway, all weather. Light-duty road, all weather,  
hard surface. Improved surface.  
Unimproved road, fair or dry  
weather.  
State Route

Revisions shown in purple and woodland compiled in cooperation  
with State of Kentucky agencies from aerial photographs taken  
1981 and other sources. Contours adjusted adjacent to certain  
photorevised hydrographic features. This information not field  
checked. Map edited 1982

BONDURANT, KY.—MO.—TENN.  
SE/4 BAYOUVILLE 15' QUADRANGLE  
N3630—W8915/7.5  
1969  
PHOTOREVISED 1982  
DMA 3157 III SE-SERIES V853  
ARTHUR H. ROBINSON MAP LIBRARY  
University of Wisconsin  
Madison  
DEC 16 1993