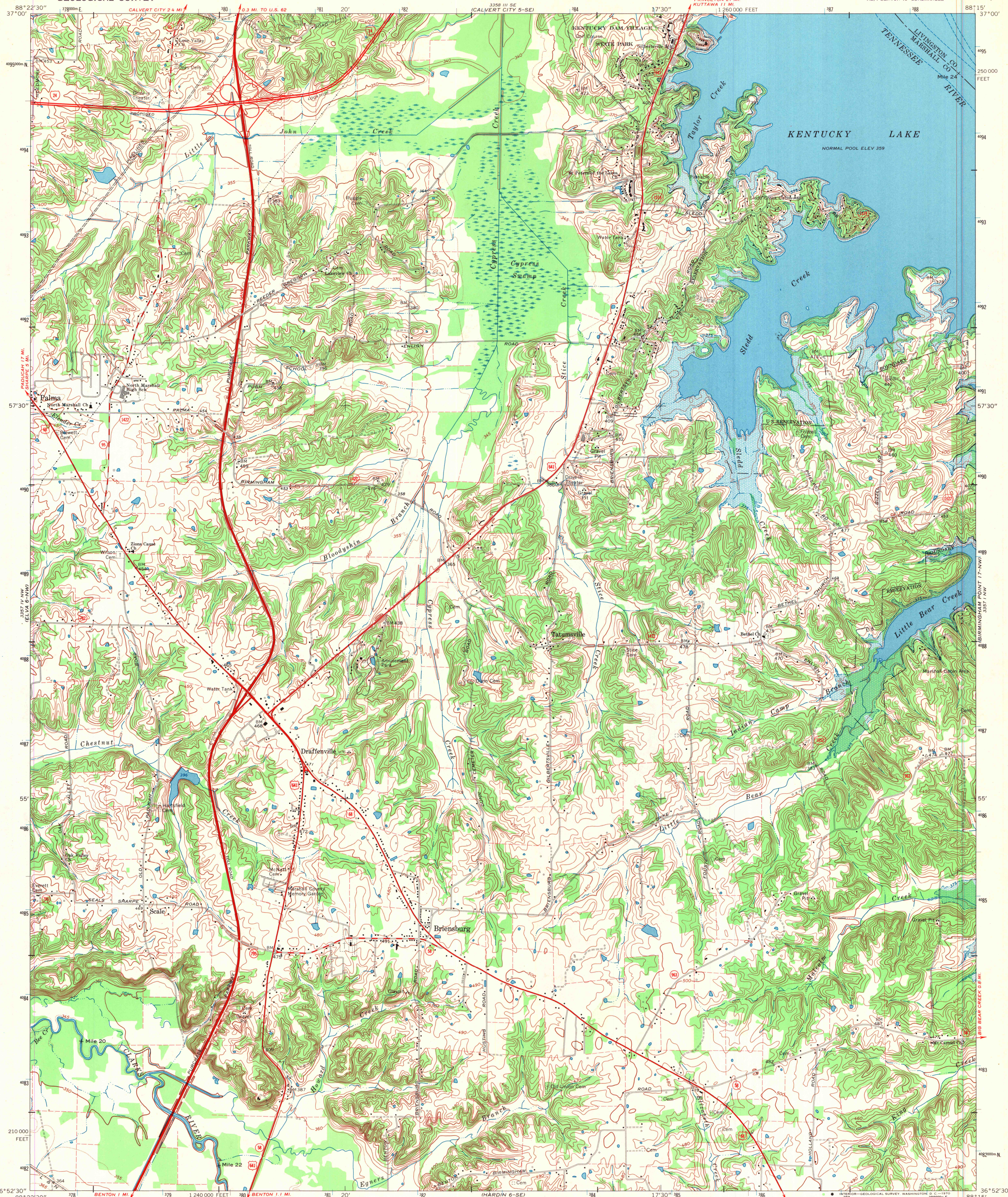


UNITED STATES  
DEPARTMENT OF THE INTERIOR  
GEOLOGICAL SURVEY

BRIENSBURG QUADRANGLE  
KENTUCKY  
7.5 MINUTE SERIES (TOPOGRAPHIC)  
NE/4 BENTON 15' QUADRANGLE



Mapped by the Tennessee Valley Authority  
Edited and published by the Geological Survey  
Revised by the Geological Survey in cooperation  
with State of Kentucky agencies

Control by USGS, USC&GS, USCE, and Tennessee Valley Authority  
Planimetry by photogrammetric methods from aerial photographs  
taken 1937. Topography by planimetric surveys 1937. Revised  
from aerial photographs taken 1968. Field checked 1969  
Polyconic projection. 1927 North American datum  
10,000-foot grid based on Kentucky coordinate system, south zone  
1000-meter Universal Transverse Mercator grid ticks, zone 16,  
shown in blue

Fine red dashed lines indicate selected fence and field lines where  
generally visible on aerial photographs. This information is unchecked  
Areas covered by dashed light-blue pattern are subject  
to controlled inundation

UTM GRID 1969 MAGNETIC NORTH  
DECLINATION AT CENTER OF SHEET

SCALE 1:24,000  
1 1000 0 1000 2000 3000 4000 5000 6000 7000 FEET  
1 KILOMETER

CONTOUR INTERVAL 10 FEET  
DOTTED LINES REPRESENT 5-FOOT CONTOURS  
DATUM IS MEAN SEA LEVEL  
THIS MAP COMPLIES WITH NATIONAL MAP ACCURACY STANDARDS  
FOR SALE BY U.S. GEOLOGICAL SURVEY, WASHINGTON, D. C. 20242,  
KENTUCKY GEOLOGICAL SURVEY, LEXINGTON, KENTUCKY 40506,  
KENTUCKY DEPARTMENT OF COMMERCE, FRANKFORT, KENTUCKY 40601,  
AND BY U.S. TENNESSEE VALLEY AUTHORITY,  
CHATTANOOGA, TENN. 37401 OR KNOXVILLE, TENN. 37902  
A FOLDER DESCRIBING TOPOGRAPHIC MAPS AND SYMBOLS IS AVAILABLE ON REQUEST

ROAD CLASSIFICATION (TVA 6-NE)  
Primary highway, all weather, hard surface  
Secondary highway, all weather, hard surface  
Light-duty road, all weather, improved surface  
Unimproved road, fair or dry weather  
Interstate Route U.S. Route State Route



MAP AND AIR PHOTO LIBRARY

JUN 29 1970

University of Wisconsin

BRIENSBURG, KY.  
NE/4 BENTON 15' QUADRANGLE  
N3652.5-W8815.7.5

1969

AMS 3357 IV NE-SERIES V853