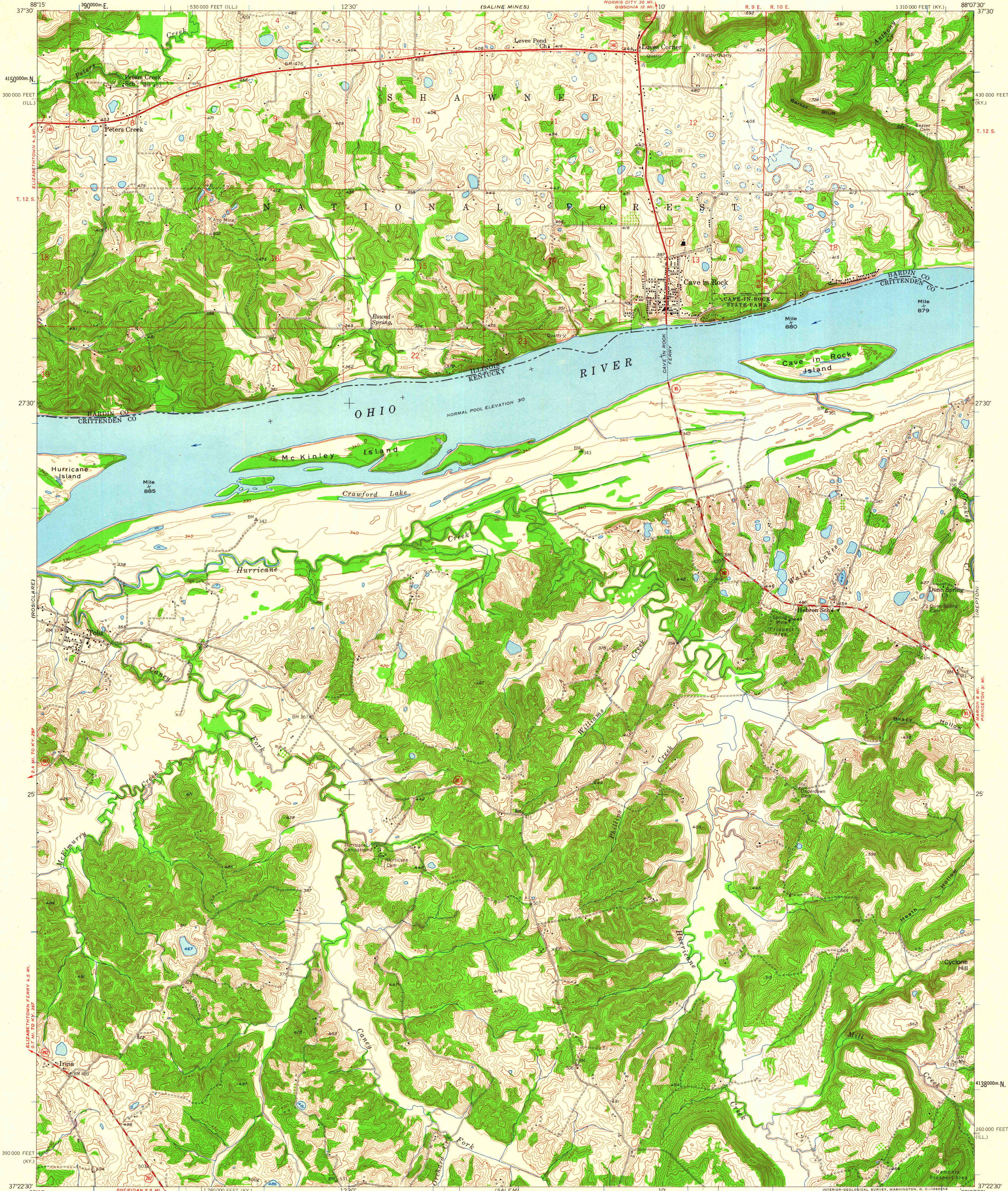


UNITED STATES  
DEPARTMENT OF THE INTERIOR  
GEOLOGICAL SURVEY

STATE OF KENTUCKY  
DEPARTMENT OF ECONOMIC DEVELOPMENT

STATE OF ILLINOIS  
WILLIAM G. STRATTON, GOVERNOR  
DEPARTMENT OF REGISTRATION AND EDUCATION  
VERA M. BINKS, DIRECTOR  
GEOLOGICAL SURVEY DIVISION, JOHN C. FRYE, CHIEF  
URBANA, ILLINOIS

CAVE IN ROCK QUADRANGLE  
KENTUCKY - ILLINOIS  
7.5 MINUTE SERIES (TOPOGRAPHIC)  
NW 1/4 CAVE IN ROCK 15' QUADRANGLE

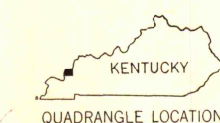


Mapped, edited, and published by the Geological Survey  
Control by USGS, USC&GS, and USCE  
Topography in Kentucky from aerial photographs by photogrammetric methods. Aerial photographs taken 1952. Field check 1954  
Topography in Illinois from aerial photographs by photogrammetric methods. Aerial photographs taken 1957. Field check 1958  
Polyconic projection. 1927 North American datum  
10,000-foot grids based on Kentucky coordinate system, south zone, and Illinois coordinate system, east zone  
1000-meter Universal Transverse Mercator grid ticks, zone 16, shown in blue  
The state boundary as shown represents the approximate position of the low waterline as determined from U. S. Corps of Engineers Ohio River charts, surveyed 1912, 1913, and supplementary information

TRUE NORTH  
MAGNETIC NORTH  
APPROXIMATE MEAN DECLINATION, 1958

SCALE 1:24,000  
1 0 1000 2000 3000 4000 5000 6000 7000 FEET  
1 0 5 10 KILOMETER  
CONTOUR INTERVAL 10 FEET  
DATUM IS MEAN SEA LEVEL

THIS MAP COMPLIES WITH NATIONAL MAP ACCURACY STANDARDS  
FOR SALE BY U. S. GEOLOGICAL SURVEY, WASHINGTON 25, D. C.  
THE KENTUCKY DEPARTMENT OF ECONOMIC DEVELOPMENT, FRANKFORT, KENTUCKY  
AND BY THE STATE GEOLOGICAL SURVEY, URBANA, ILLINOIS  
A FOLDER DESCRIBING TOPOGRAPHIC MAPS AND SYMBOLS IS AVAILABLE ON REQUEST



MAP AND AIR PHOTO LIBRARY  
University of Wisconsin

ROAD CLASSIFICATION  
Heavy-duty ——— Light-duty ———  
Medium-duty ——— Unimproved dirt ———  
○ State Route

CAVE IN ROCK, KY.-ILL.  
NW 1/4 CAVE IN ROCK 15' QUADRANGLE  
N3722.5-W8807.5/7.5  
1958