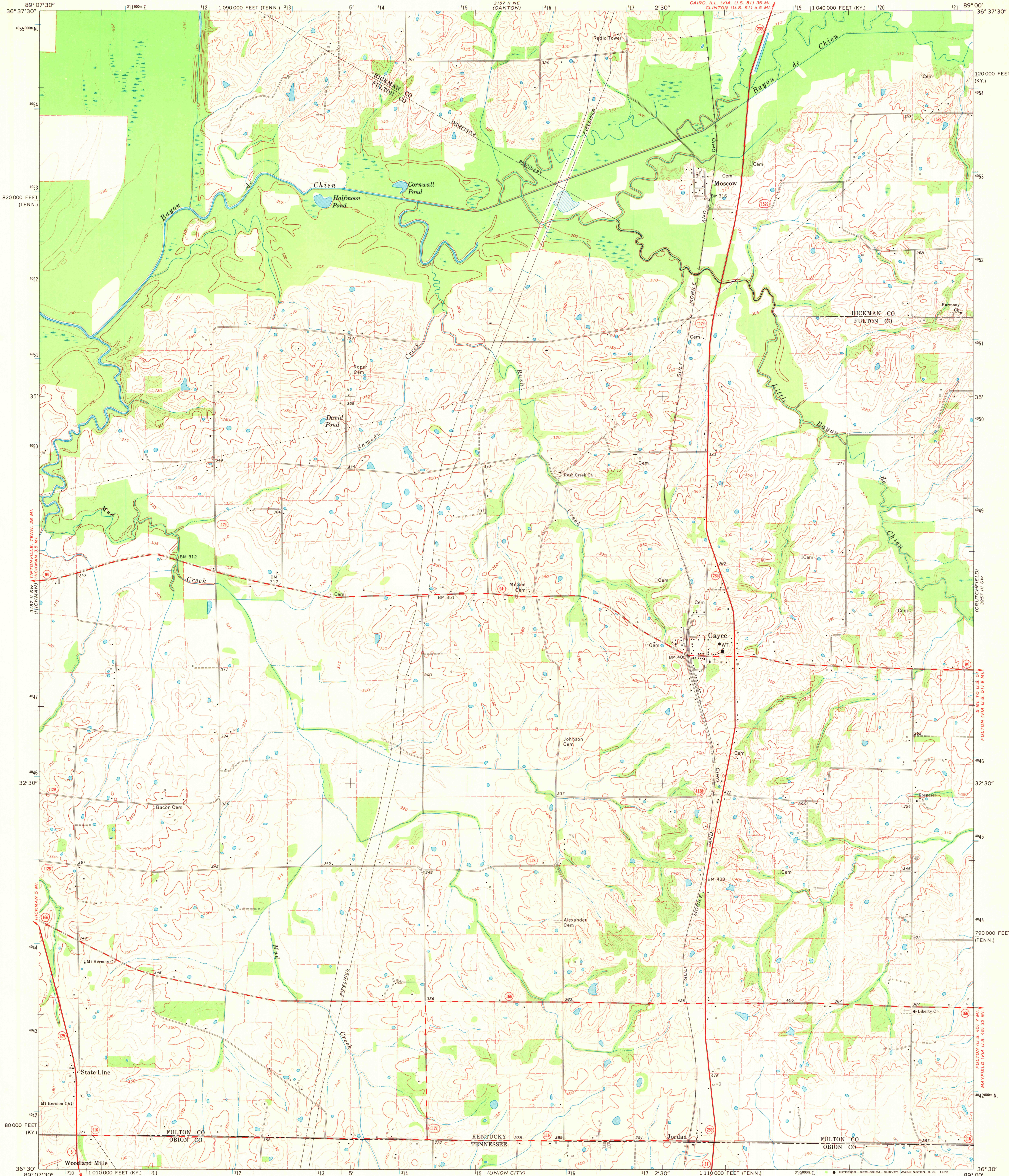
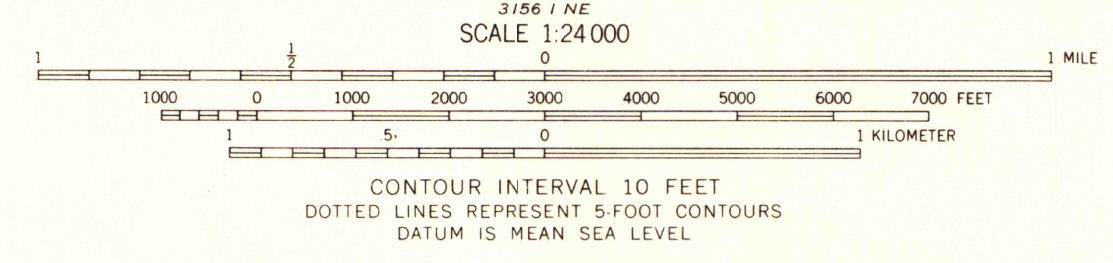
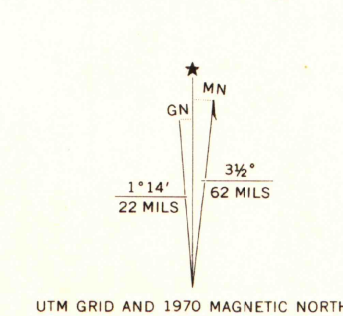


UNITED STATES  
DEPARTMENT OF THE INTERIOR  
GEOLOGICAL SURVEY

CAYCE QUADRANGLE  
KENTUCKY-TENNESSEE  
7.5 MINUTE SERIES (TOPOGRAPHIC)  
SE 4 HICKMAN 15' QUADRANGLE

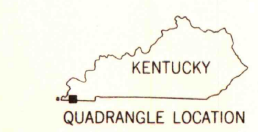


Mapped, edited, and published by the Geological Survey  
in cooperation with the State of Kentucky  
Control by USGS and USC&GS  
Planimetry by photogrammetric methods from aerial photographs  
taken 1950. Topography by planimetric surveys 1951.  
Revised from aerial photographs taken 1969. Field checked 1970  
Polyconic projection. 1927 North American datum  
10,000-foot grids based on Kentucky coordinate system, south zone  
and Tennessee coordinate system  
1000-meter Universal Transverse Mercator grid ticks,  
zone 16, shown in blue  
Fine red dashed lines indicate selected fence and field lines where  
generally visible on aerial photographs. This information is unchecked



THIS MAP COMPLIES WITH NATIONAL MAP ACCURACY STANDARDS  
FOR SALE BY U. S. GEOLOGICAL SURVEY, WASHINGTON, D. C. 20242,  
KENTUCKY GEOLOGICAL SURVEY, LEXINGTON, KENTUCKY 40506,  
KENTUCKY DEPARTMENT OF COMMERCE, FRANKFORT, KENTUCKY 40601,  
AND TENNESSEE DIVISION OF GEOLOGY, NASHVILLE, TENNESSEE 37219  
A FOLDER DESCRIBING TOPOGRAPHIC MAPS AND SYMBOLS IS AVAILABLE ON REQUEST

ROAD CLASSIFICATION  
Primary highway, all weather, hard surface  
Secondary highway, all weather, hard surface  
Light-duty road, all weather, improved surface  
Unimproved road, fair or dry weather  
State Route



MAP AND AIR PHOTO  
LIBRARY  
MAY 23 1972  
University of Wisconsin

CAYCE KY-TENN.  
SE 4 HICKMAN 15' QUADRANGLE  
N3630-W8900/7.5  
1970  
AMS 3157 II SE-SERIES V853