

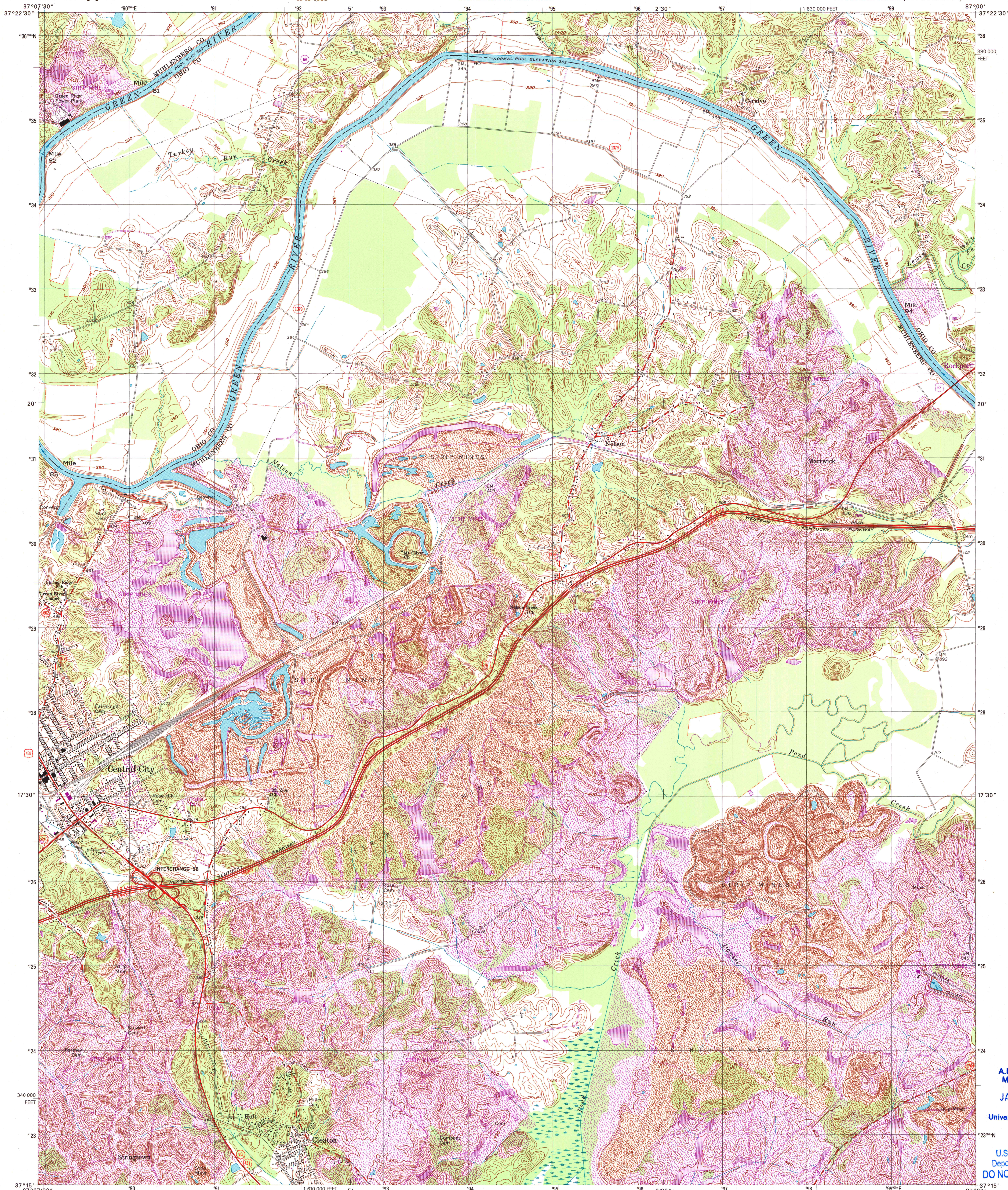


U.S. DEPARTMENT OF THE INTERIOR
U.S. GEOLOGICAL SURVEY



STATE OF KENTUCKY
KENTUCKY GEOLOGICAL SURVEY
UNIVERSITY OF KENTUCKY

CENTRAL CITY EAST QUADRANGLE
KENTUCKY
7.5-MINUTE SERIES (TOPOGRAPHIC)



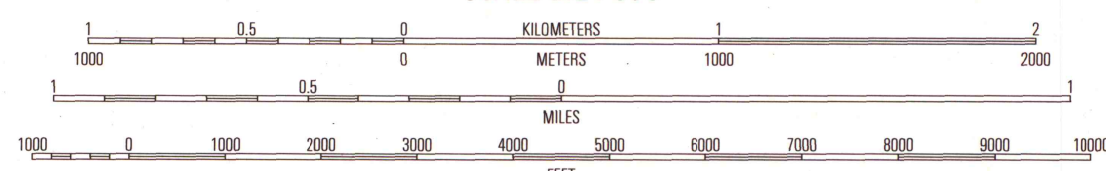
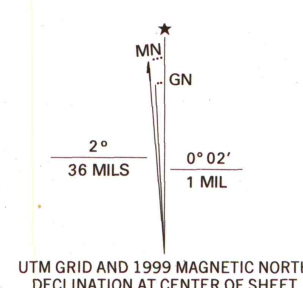
A.H. ROBINSON
MAP LIBRARY

JAN 03 2000

University of Wisconsin
Madison

U.S. Regional
Depository Copy
DO NOT DISCARD

Produced by the United States Geological Survey
Topography compiled 1963. Planimetry derived from imagery taken 1981 and other sources. Photorevised using imagery dated 1997; no major culture or drainage changes observed. Survey control current as of 1963. Boundaries, other than corporate, verified 1999
North American Datum of 1927 (NAD 27). Projection and 10 000-foot ticks: Kentucky coordinate system, south zone (Lambert conformal conic)
1000-meter Universal Transverse Mercator grid, zone 16
North American Datum of 1983 (NAD 83) is shown by dashed corner ticks. The values of the shift between NAD 27 and NAD 83 for 7.5-minute intersections are obtainable from National Geodetic Survey NADCON software
Broken contours indicate areas which have been strip mined subsequent to the date of revision photography
Information shown in purple may not meet USGS content standards and may conflict with previously mapped contours



CONTOUR INTERVAL 10 FEET
NATIONAL GEODETIC VERTICAL DATUM OF 1929
TO CONVERT FROM FEET TO METERS, MULTIPLY BY 0.3048

THIS MAP COMPLIES WITH NATIONAL MAP ACCURACY STANDARDS
FOR SALE BY U.S. GEOLOGICAL SURVEY, P.O. BOX 25286, DENVER, COLORADO 80225
AND KENTUCKY DEPARTMENT OF COMMERCE, FRANKFORT, KENTUCKY 40601
KENTUCKY GEOLOGICAL SURVEY, LEXINGTON, KENTUCKY 40506
A FOLDER DESCRIBING TOPOGRAPHIC MAPS AND SYMBOLS IS AVAILABLE ON REQUEST



QUADRANGLE LOCATION

1	2	3
4	5	6
7	8	9

ADJOINING 7.5' QUADRANGLE NAMES

1 Livermore
2 Equality
3 Hartford
4 Central City West
5 Paradise
6 Greenville
7 Drakesboro
8 Rochester

ROAD CLASSIFICATION
Primary highway
hard surface
Secondary highway
hard surface
Light-duty road, hard or
improved surface
Unimproved road
Interstate Route
U.S. Route
State Route

CENTRAL CITY EAST, KY
1997

NIMA 3558 I SE-SERIES V853



ISBN 0-607-91070-4
9 780607 10704