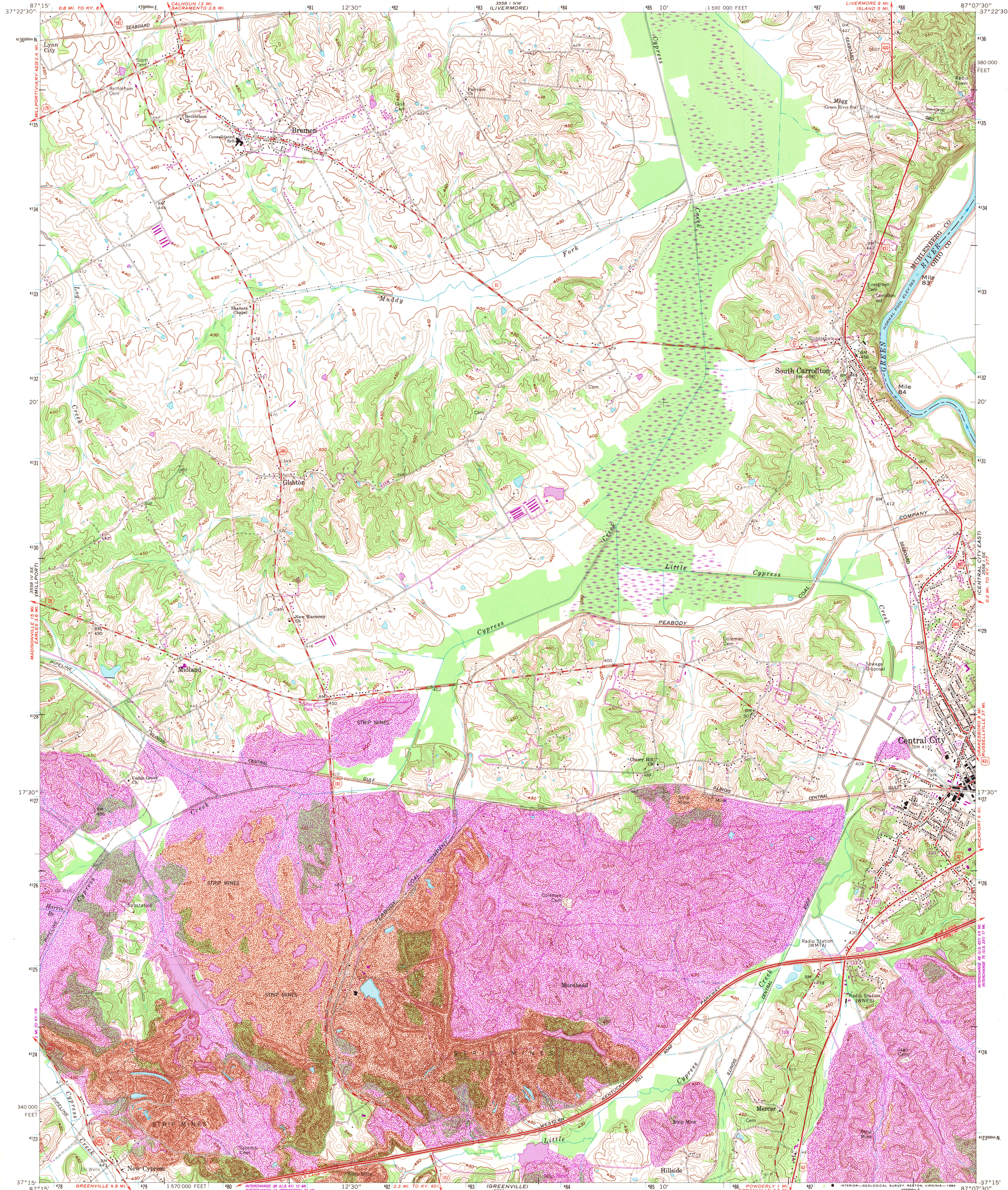


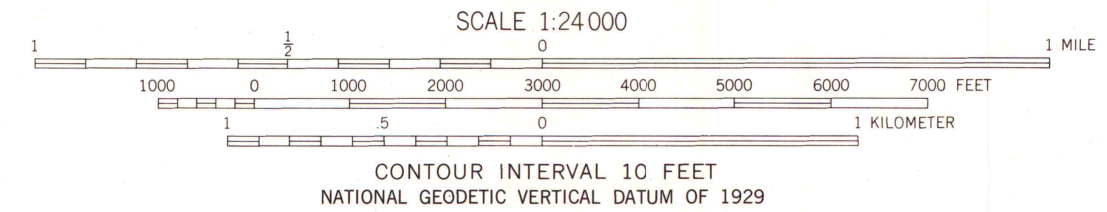
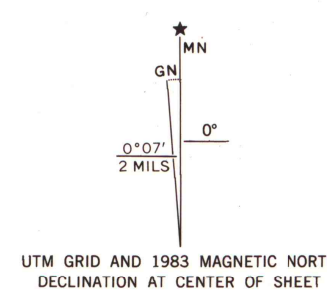
UNITED STATES
DEPARTMENT OF THE INTERIOR
GEOLOGICAL SURVEY

STATE OF KENTUCKY
KENTUCKY GEOLOGICAL SURVEY
UNIVERSITY OF KENTUCKY

CENTRAL CITY WEST QUADRANGLE
KENTUCKY
7.5 MINUTE SERIES (TOPOGRAPHIC)
SW/4 CENTRAL CITY 15' QUADRANGLE
LIVERMORE 9 MI.
ISLAND 5 MI.



Mapped, edited, and published by the Geological Survey
Control by USGS and NOS/NOAA
Topography by photogrammetric methods from aerial photographs taken 1951 and 1952. Field checked 1953. Revised 1963.
Polyconic projection. 10,000-foot grid ticks based on Kentucky coordinate system, south zone. 1000-meter Universal Transverse Mercator grid ticks, zone 16, shown in blue.
1927 North American Datum.
To place on the predicted North American Datum 1983 move the projection lines 4 meters south and 1 meter east as shown by dashed corner ticks.
Fine red dashed lines indicate selected fence and field lines where generally visible on aerial photographs. This information is unchecked to the date of revision photography.
Broken contours indicate areas which have been strip mined subsequent to the date of revision photography.
Revisions shown in purple and woodland compiled in cooperation with State of Kentucky agencies from aerial photographs taken 1981 and other sources. Contours adjusted adjacent to certain photorevised hydrographic features. This information not field checked. Map edited 1983.



THIS MAP COMPLIES WITH NATIONAL MAP ACCURACY STANDARDS
FOR SALE BY U.S. GEOLOGICAL SURVEY, RESTON, VIRGINIA 22092,
KENTUCKY GEOLOGICAL SURVEY, LEXINGTON, KENTUCKY 40506,
AND KENTUCKY DEPARTMENT OF COMMERCE, FRANKFORT, KENTUCKY 40601
A FOLDER DESCRIBING TOPOGRAPHIC MAPS AND SYMBOLS IS AVAILABLE ON REQUEST

U.S. Regional
Depository Copy
DO NOT DISCARD

A.H. ROBINSON
MAP LIBRARY
OCT 23 1984
University of Wisconsin
Madison

CENTRAL CITY WEST, KY.
SW/4 CENTRAL CITY 15' QUADRANGLE
37087-C2-TF-024
1963
PHOTOREVISED 1983
DMA 3558 1 SW-SERIES V553