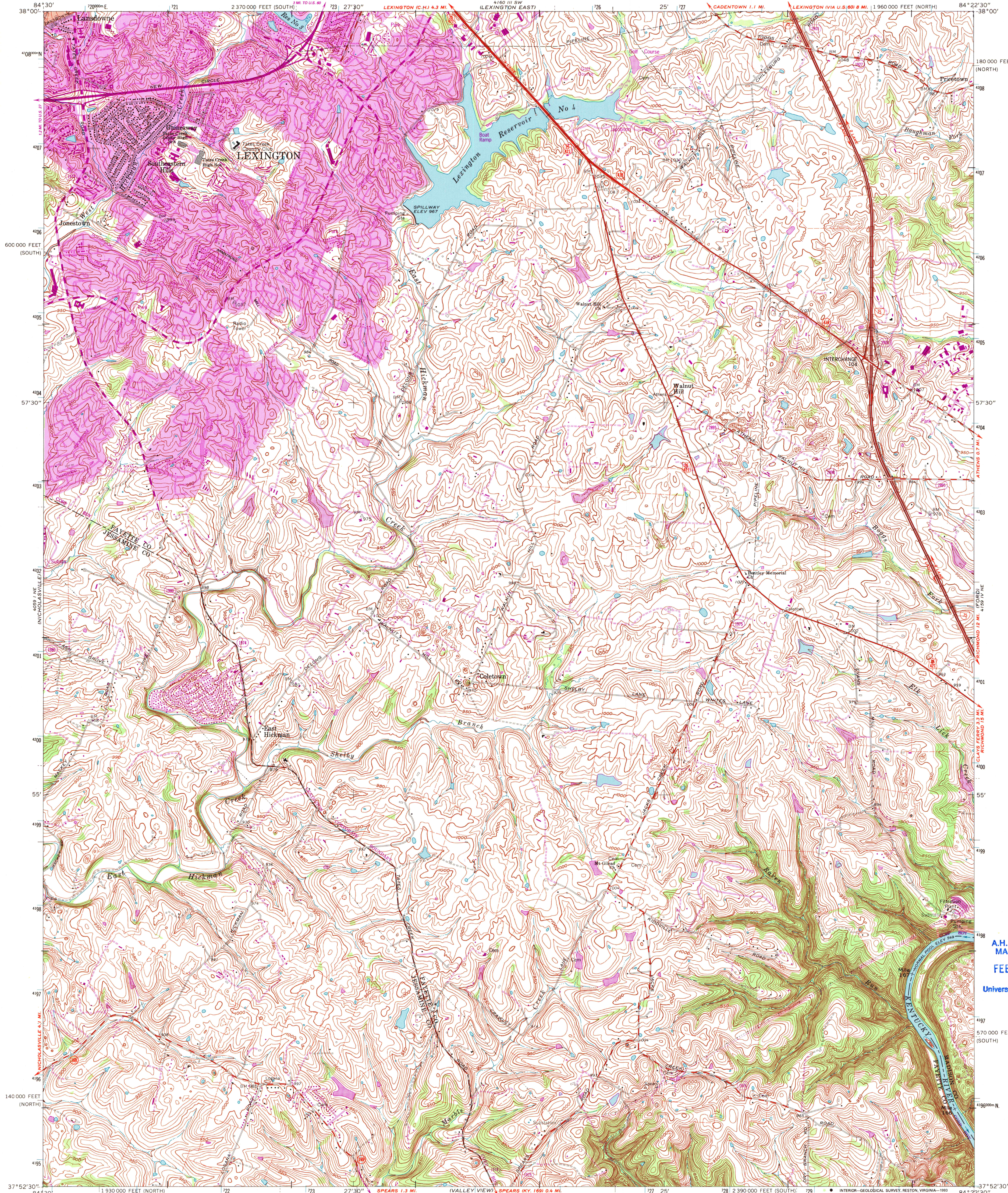


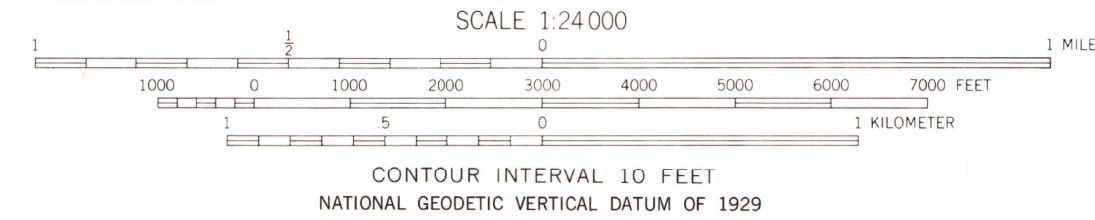
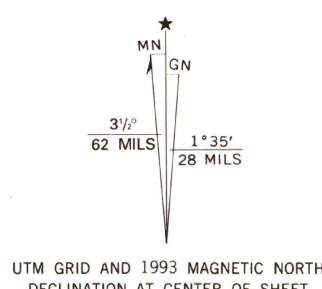
UNITED STATES
DEPARTMENT OF THE INTERIOR
GEOLOGICAL SURVEY

STATE OF KENTUCKY
KENTUCKY GEOLOGICAL SURVEY
UNIVERSITY OF KENTUCKY

COLETOWN QUADRANGLE
KENTUCKY
7.5 MINUTE SERIES (TOPOGRAPHIC)
NW/4 VALLEY VIEW 15' QUADRANGLE
1 960 000 FEET (NORTH)



Produced by the United States Geological Survey
Control by USGS, NOS/NOAA and Kentucky Geodetic Survey
Topography by photogrammetric methods from aerial photographs
taken 1950. Field checked 1952. Revised 1965
Projection: Kentucky coordinate system, north zone
(Lambert conformal conic)
10,000-foot grid ticks: Kentucky coordinate
system, north and south zones
1000-meter Universal Transverse Mercator grid ticks, zone 16, shown in blue
1927 North American Datum (NAD 27)
North American Datum of 1983 (NAD 83) is shown by dashed corner ticks
The values of the shift between NAD 27 and NAD 83 for 7.5-minute
intersections are given in USGS Bulletin 1875
Red tint indicates area in which only landmark buildings are shown
Fine red dashed lines indicate selected fence and field lines where
generally visible on aerial photographs. This information is unchecked



THIS MAP COMPLIES WITH NATIONAL MAP ACCURACY STANDARDS
FOR SALE BY U. S. GEOLOGICAL SURVEY, DENVER, COLORADO 80225 OR RESTON, VIRGINIA 22092,
KENTUCKY GEOLOGICAL SURVEY, LEXINGTON, KENTUCKY 40506,
AND KENTUCKY DEPARTMENT OF COMMERCE, FRANKFORT, KENTUCKY 40601
A FOLDER DESCRIBING TOPOGRAPHIC MAPS AND SYMBOLS IS AVAILABLE ON REQUEST

U.S. Regional
Depository Copy
DO NOT DISCARD



ROAD CLASSIFICATION
Heavy-duty ——— Light-duty ———
Medium-duty ——— Unimproved dirt ———
Interstate Route ——— U.S. Route ——— State Route ———

COLETOWN, KY.
NW/4 VALLEY VIEW 15' QUADRANGLE
37084-H4-TF-024

1965
REVISED 1993
DMA 4159 IV NW—SERIES V853

Revisions shown in purple and woodland compiled in cooperation with
State of Kentucky agencies from aerial photographs taken 1988 and 1990
and other sources. Contours not revised. This information
not field checked. Map edited 1993
Purple tint indicates extension of urban areas

A.H. ROBINSON
MAP LIBRARY
FEB 08 1994
University of Wisconsin
Madison