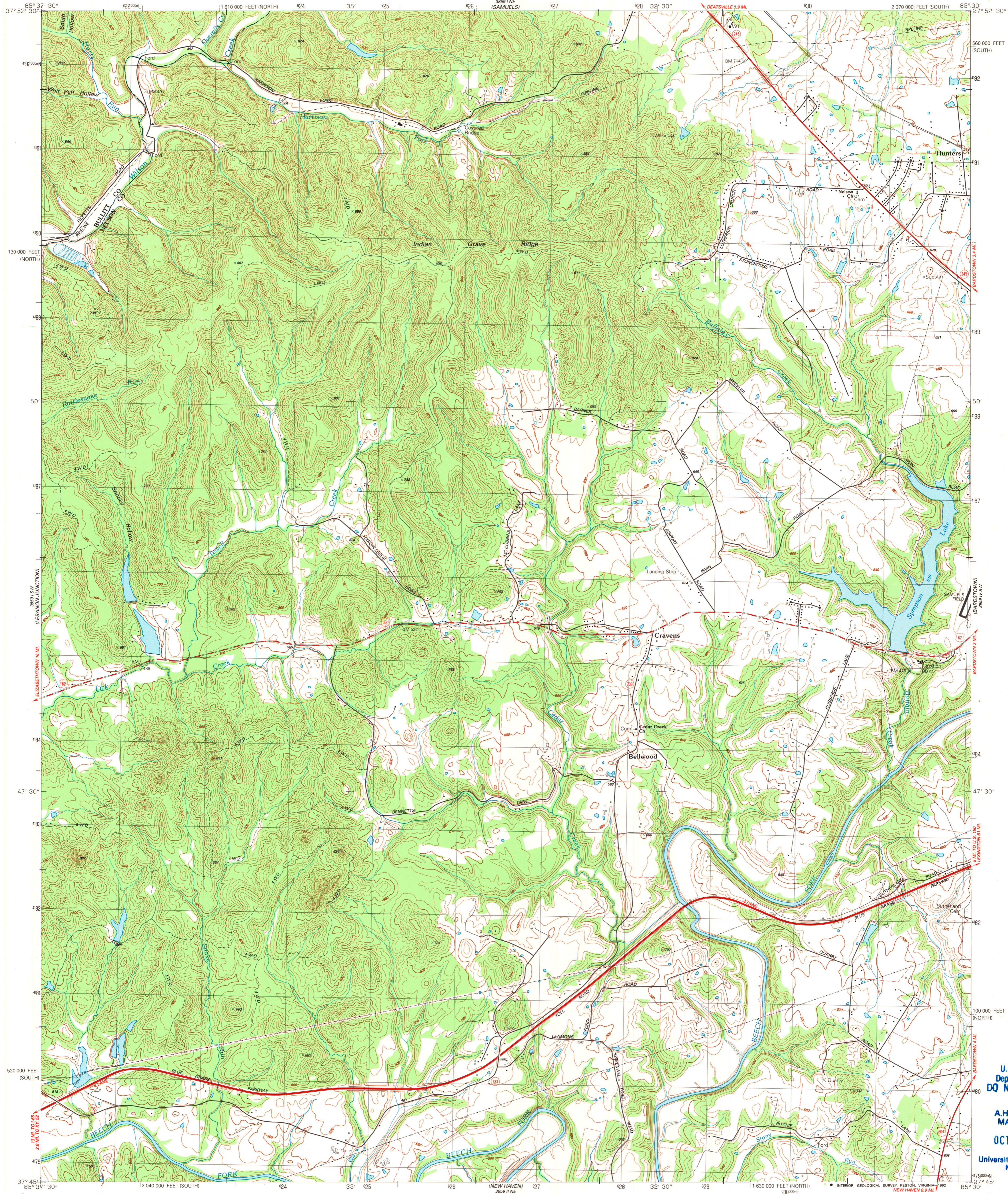


UNITED STATES  
DEPARTMENT OF THE INTERIOR  
GEOLOGICAL SURVEY

CRAVENS QUADRANGLE  
KENTUCKY  
7.5 MINUTE SERIES (TOPOGRAPHIC)  
SE/4 SHEPHERDSVILLE 15' QUADRANGLE



Produced by the United States Geological Survey

Control by USGS and NOS/NOAA

Compiled from aerial photographs taken 1987

Field checked 1988. Map edited 1992

Projection: Kentucky coordinate system, south zone

(Lambert conformal conic)

10,000-foot grid ticks: Kentucky coordinate

system, south and north zones

1000-meter Universal Transverse Mercator grid, zone 16

1927 North American Datum

The difference between 1927 North American Datum and North

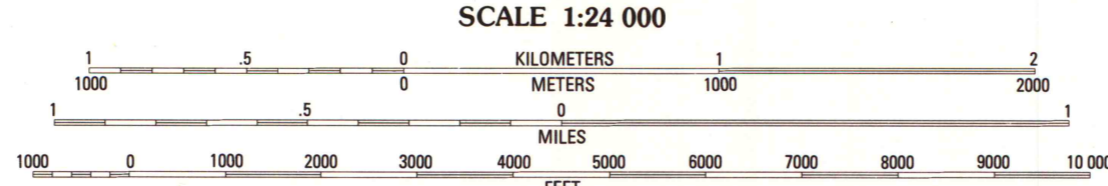
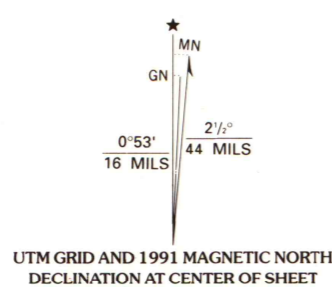
American Datum of 1983 (NAD 83) for 7.5-minute intersections

is given in USGS Bulletin 1875. The NAD 83 is shown by

dashed corner ticks

Fine red dashed lines indicate selected fence and field lines where

generally visible on aerial photographs. This information is unchecked



CONTOUR INTERVAL 20 FEET

NATIONAL GEODETIC VERTICAL DATUM OF 1929

THIS MAP COMPLIES WITH NATIONAL MAP ACCURACY STANDARDS  
FOR SALE BY U.S. GEOLOGICAL SURVEY, DENVER, COLORADO 80225, OR RESTON, VIRGINIA 22092  
KENTUCKY GEOLOGICAL SURVEY, LEXINGTON, KENTUCKY 40506  
AND KENTUCKY DEPARTMENT OF COMMERCE, FRANKFORT, KENTUCKY 40601  
A FOLDER DESCRIBING TOPOGRAPHIC MAPS AND SYMBOLS IS AVAILABLE ON REQUEST



ROAD CLASSIFICATION	
Primary highway, hard surface	Light-duty road, hard or improved surface
Secondary highway, hard surface	Unimproved road
Interstate Route	U. S. Route
	State Route

CRAVENS, KY.

SE/4 SHEPHERDSVILLE 15' QUADRANGLE

37085-G5-TF-024

1992

DMA 3859 1 SE-SERIES V853

U.S. Geological  
Depository Copy  
DO NOT DISCARD

A.H. ROBINSON

MAP LIBRARY

OCT 19 1992

University of Wisconsin  
Madison