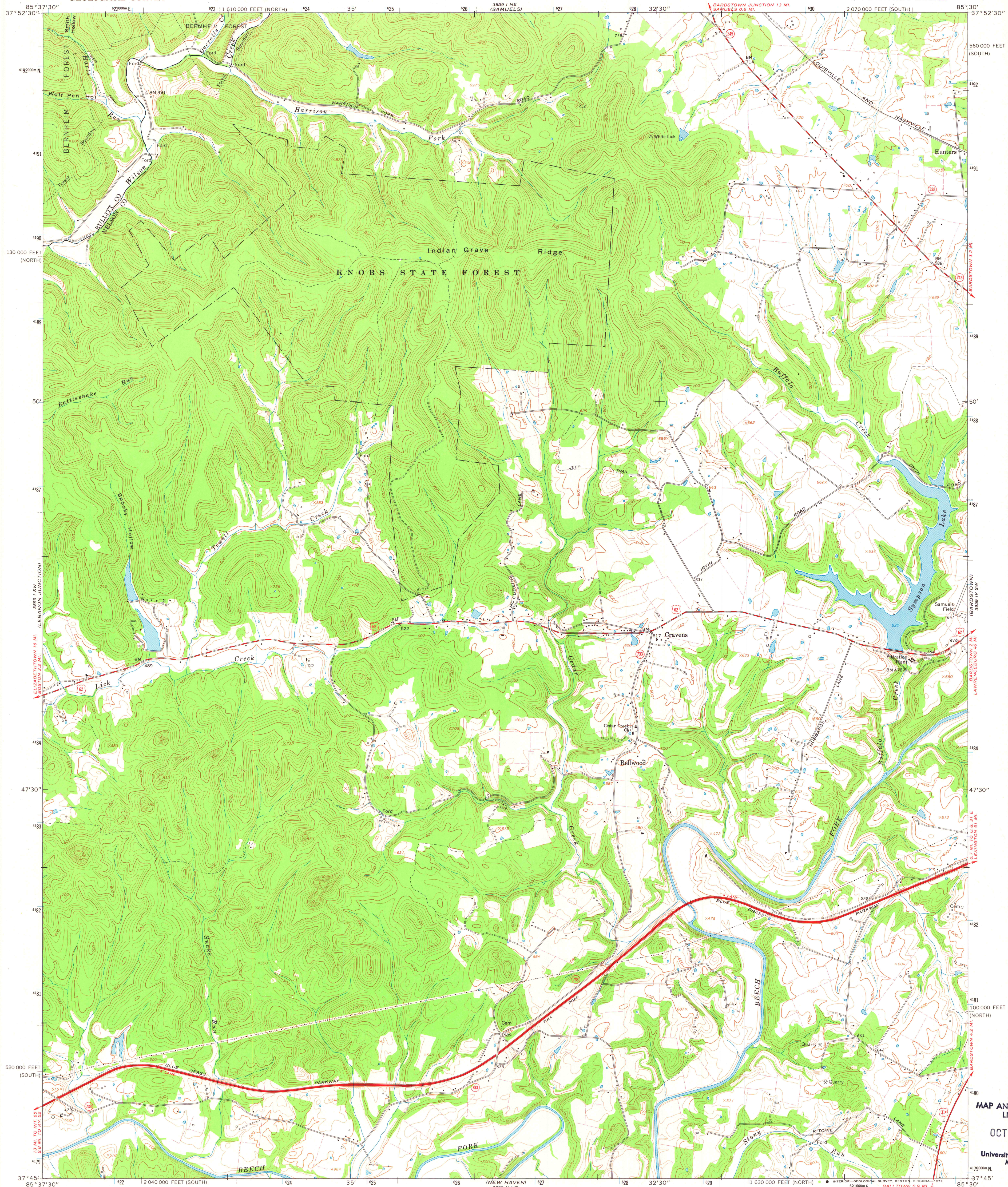


UNITED STATES
DEPARTMENT OF THE INTERIOR
GEOLOGICAL SURVEY



CRAVENS QUADRANGLE
KENTUCKY
7.5 MINUTE SERIES (TOPOGRAPHIC)
SE 1/4 SHEPHERDSVILLE 15' QUADRANGLE



Mapped by the Army Map Service
Edited and published by the Geological Survey
Revised by the Geological Survey in cooperation with
State of Kentucky agencies

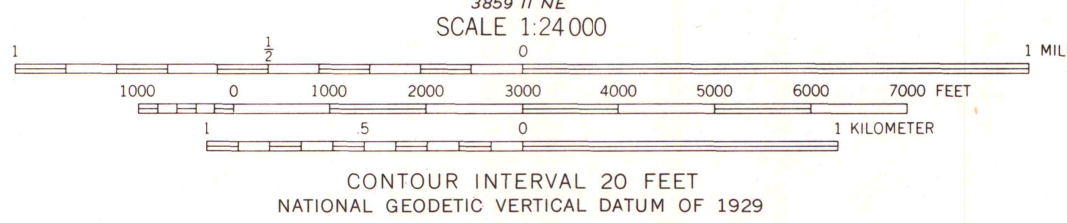
Control by USGS and USC&GS
Topography by photogrammetric methods from aerial photographs
taken 1947. Field checked 1949. Revised from aerial
photographs taken 1967. Field checked 1967.

Polyconic projection. 1927 North American datum
10,000-foot grids based on Kentucky coordinate system, south
and north zones
1000-meter Universal Transverse Mercator grid ticks, zone 16,
shown in blue

To place on the predicted North American Datum 1983
move the projection lines 4 meters south and
3 meters west as shown by dashed corner ticks

UTM GRID AND 1967 MAGNETIC NORTH
DECLINATION AT CENTER OF SHEET
Fine red dashed lines indicate selected fence and field
lines where generally visible on aerial photographs.
This information is unchecked

There may be private inholdings within the boundaries of
the National or State reservations shown on this map



THIS MAP COMPLIES WITH NATIONAL MAP ACCURACY STANDARDS
FOR SALE BY U. S. GEOLOGICAL SURVEY, RESTON, VIRGINIA 22092
KENTUCKY GEOLOGICAL SURVEY, LEXINGTON, KENTUCKY 40506,
AND KENTUCKY DEPARTMENT OF COMMERCE, FRANKFORT, KENTUCKY 40601
A FOLDER DESCRIBING TOPOGRAPHIC MAPS AND SYMBOLS IS AVAILABLE ON REQUEST

Map photoinspected 1976
No major culture or drainage changes observed

ROAD CLASSIFICATION
Primary highway, all weather, hard surface
Secondary highway, all weather, hard surface
Light-duty road, all weather, improved surface
Unimproved road, fair or dry weather
U. S. Route
State Route

CRAVENS, KY.
SE 1/4 SHEPHERDSVILLE 15' QUADRANGLE
N 3745-W 8530/7.5

1967
PHOTOINSPECTED 1976
AMS 3859 I SE-SERIES W853

MAP AND AIR PHOTO
LIBRARY

OCT 30 1979

University of Wisconsin
Madison