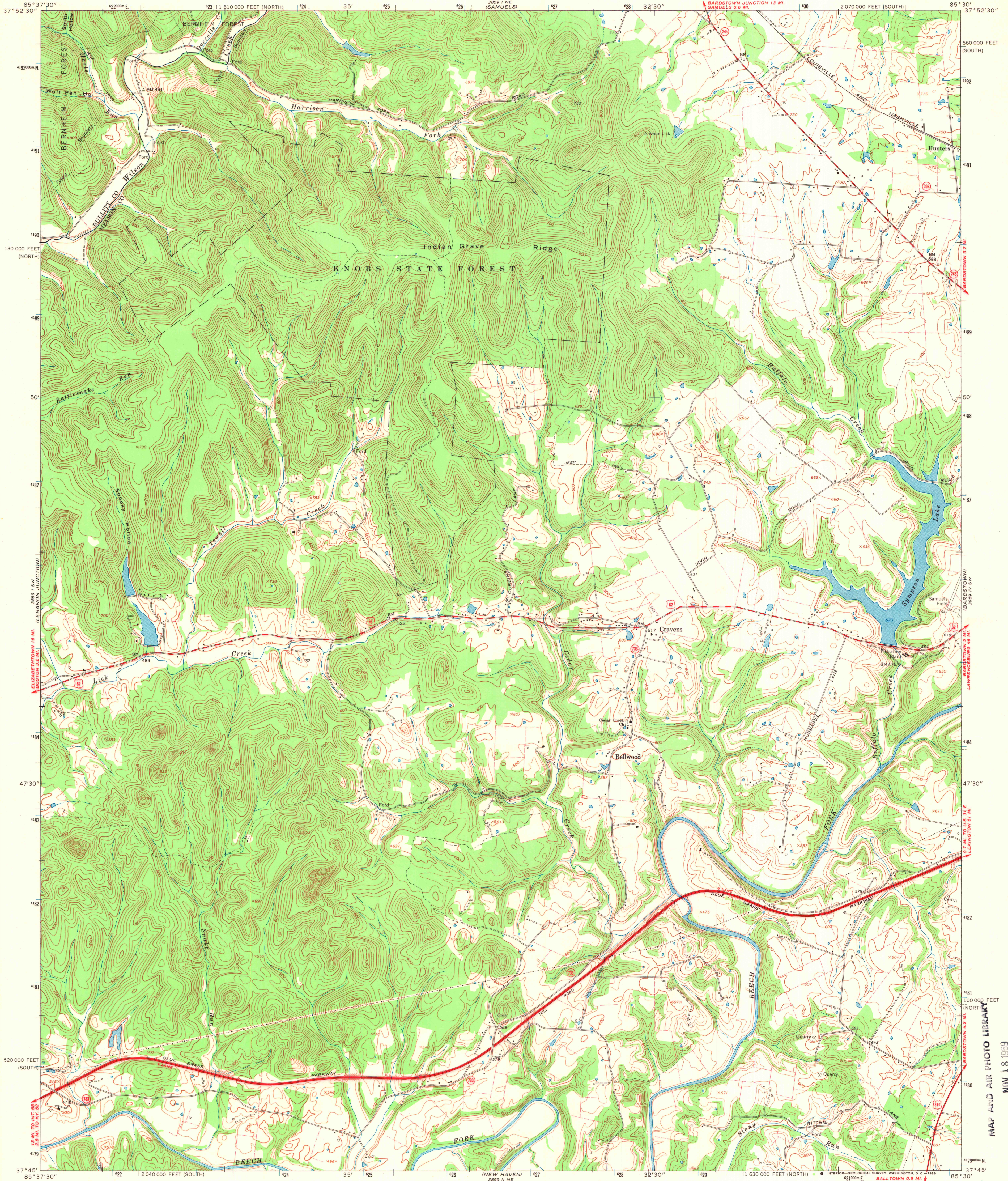
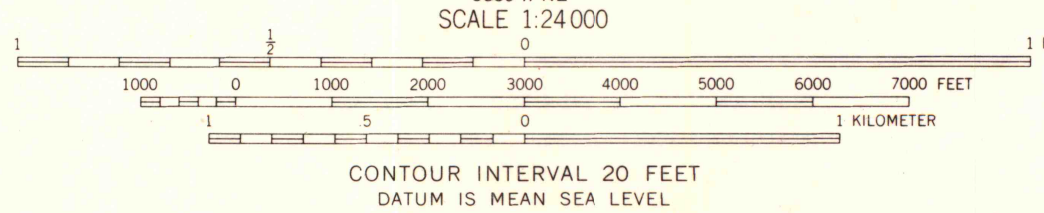


UNITED STATES  
DEPARTMENT OF THE INTERIOR  
GEOLOGICAL SURVEY

CRAVENS QUADRANGLE  
KENTUCKY  
7.5 MINUTE SERIES (TOPOGRAPHIC)  
SE/4 SHEPHERDSVILLE 15' QUADRANGLE



Mapped by the Army Map Service  
Edited and published by the Geological Survey  
Revised by the Geological Survey in cooperation with  
State of Kentucky agencies  
Control by USGS and USC&GS  
Topography by photogrammetric methods from aerial photographs  
taken 1947. Field checked 1949. Revised from aerial  
photographs taken 1967. Field checked 1967.  
Polyconic projection. 1927 North American datum  
10,000-foot grids based on Kentucky coordinate system, south  
and north zones.  
1000-meter Universal Transverse Mercator grid ticks, zone 16,  
shown in blue  
Fine red dashed lines indicate selected fence and field lines where  
generally visible on aerial photographs. This information is unchecked



THIS MAP COMPLIES WITH NATIONAL MAP ACCURACY STANDARDS  
FOR SALE BY U.S. GEOLOGICAL SURVEY, WASHINGTON, D. C. 20242,  
KENTUCKY GEOLOGICAL SURVEY, LEXINGTON, KENTUCKY 40506,  
AND KENTUCKY DEPARTMENT OF COMMERCE, FRANKFORT, KENTUCKY 40601  
A FOLDER DESCRIBING TOPOGRAPHIC MAPS AND SYMBOLS IS AVAILABLE ON REQUEST



Primary highway, all weather, Light-duty road, all weather,  
hard surface, improved surface  
Secondary highway, all weather, Unimproved road, fair or dry  
hard surface, weather  
U. S. Route State Route

CRAVENS, KY.  
SE/4 SHEPHERDSVILLE 15' QUADRANGLE  
N3745-W8530/7.5

1967

AMS 3859 I SE-SERIES V853

MAP AND AIR PHOTO LIBRARY  
NOV 18 1969  
University of Wisconsin