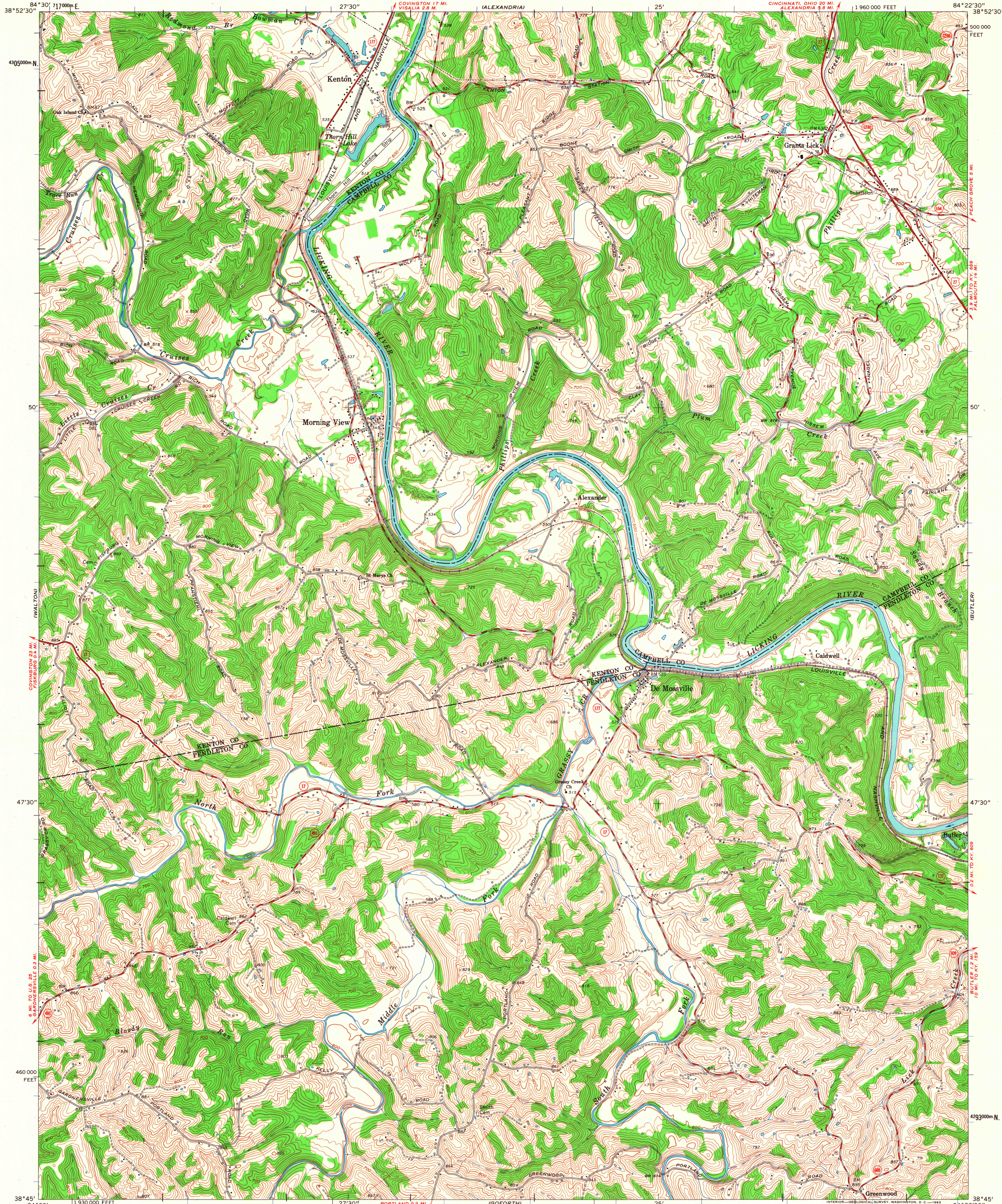


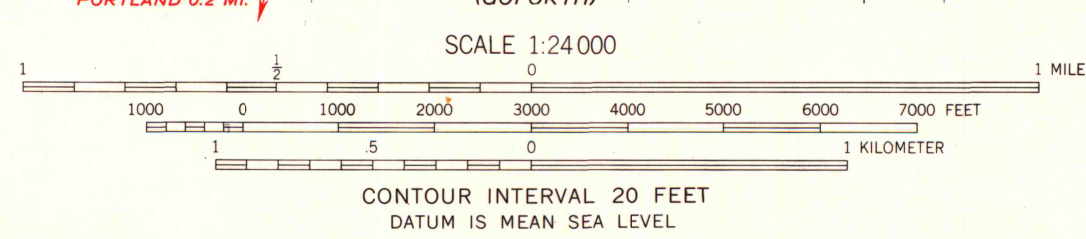
UNITED STATES
DEPARTMENT OF THE INTERIOR
GEOLOGICAL SURVEY

DE MOSSVILLE QUADRANGLE
KENTUCKY
7.5 MINUTE SERIES (TOPOGRAPHIC)
SW 1/4 ALEXANDRIA 15' QUADRANGLE

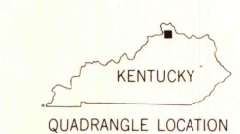


Mapped, edited, and published by the Geological Survey
in cooperation with Kentucky Geological Survey and
University of Kentucky
Control by USGS and USC&GS
Topography by photogrammetric methods from aerial photographs
taken 1952. Field checked 1953. Revised 1961
Polyconic projection. 1927 North American datum
10,000-foot grid based on Kentucky coordinate system, north zone
1000-meter Universal Transverse Mercator grid ticks,
zone 16, shown in blue
Fine red dashed lines indicate selected fence and field lines where
generally visible on aerial photographs. This information is unchecked

TRUE NORTH
MAGNETIC NORTH
APPROXIMATE MEAN
DECLINATION, 1961



THIS MAP COMPLIES WITH NATIONAL MAP ACCURACY STANDARDS
FOR SALE BY U. S. GEOLOGICAL SURVEY, WASHINGTON 25, D. C.,
KENTUCKY GEOLOGICAL SURVEY, LEXINGTON, KENTUCKY,
AND KENTUCKY DEPARTMENT OF COMMERCE, FRANKFORT, KENTUCKY
A FOLDER DESCRIBING TOPOGRAPHIC MAPS AND SYMBOLS IS AVAILABLE ON REQUEST



ROAD CLASSIFICATION
Heavy-duty ——— Light-duty ———
Medium-duty ——— Unimproved dirt ———
U.S. Route ——— State Route ———

DE MOSSVILLE, KY.
SW 1/4 ALEXANDRIA 15' QUADRANGLE
N3845—W8422.5/7.5

MAP AND AIR PHOTO LIBRARY
University of Wisconsin

1961