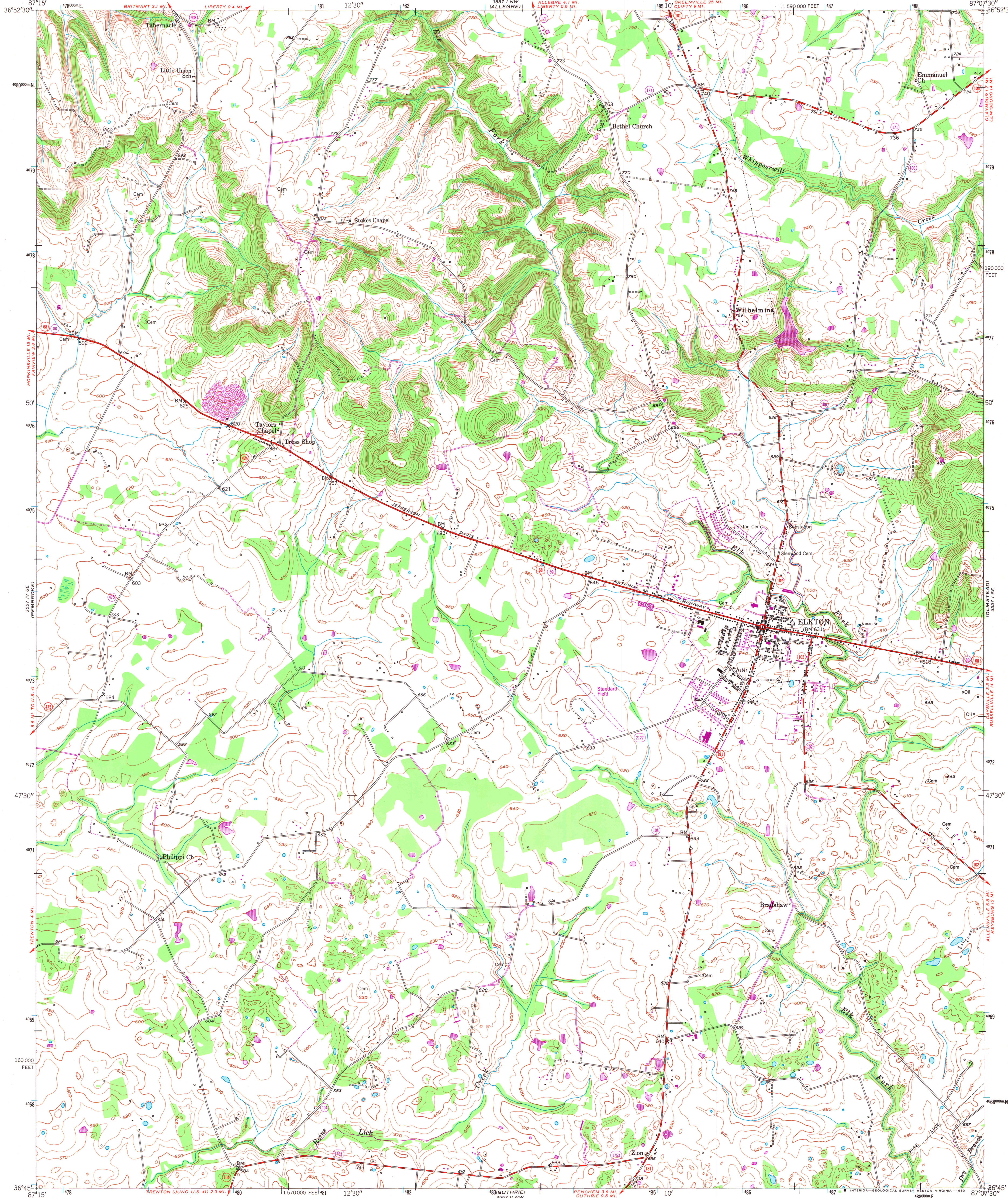


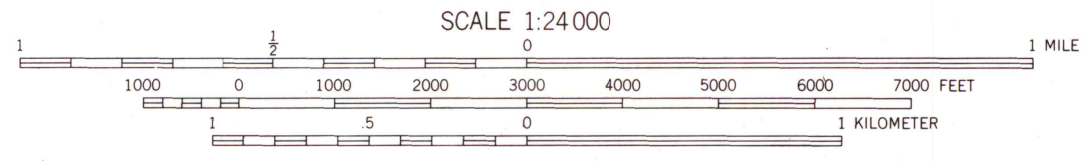
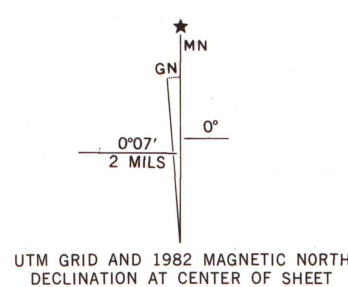
UNITED STATES
DEPARTMENT OF THE INTERIOR
GEOLOGICAL SURVEY

STATE OF KENTUCKY
AGRICULTURAL AND INDUSTRIAL DEVELOPMENT BOARD

ELKTON QUADRANGLE
KENTUCKY-TODD CO.
7.5 MINUTE SERIES (TOPOGRAPHIC)



Mapped, edited, and published by the Geological Survey
Control by USGS and NOS/NOAA
Culture and drainage in part compiled from aerial photographs
taken 1949. Topography by plane-table methods 1950
Polyconic projection. 10,000-foot grid ticks based on Kentucky
coordinate system, south zone. 1000-meter Universal Transverse
Mercator grid ticks, zone 16, shown in blue. 1927 North American
Datum. To place on the predicted North American Datum 1983
move the projection lines 5 meters south and 1 meter east
as shown by dashed corner ticks
Revisions shown in purple and woodland compiled in cooperation
with State of Kentucky agencies from aerial photographs taken
1981 and other sources. Contours adjusted adjacent to certain
photorevised hydrographic features. This information not field
checked. Map edited 1982



CONTOUR INTERVAL 10 FEET
NATIONAL GEODETIC VERTICAL DATUM OF 1929

THIS MAP COMPLIES WITH NATIONAL MAP ACCURACY STANDARDS
FOR SALE BY U. S. GEOLOGICAL SURVEY, RESTON, VIRGINIA 22092,
KENTUCKY GEOLOGICAL SURVEY, LEXINGTON, KENTUCKY 40506,
AND KENTUCKY DEPARTMENT OF COMMERCE, FRANKFORT, KENTUCKY 40601
A FOLDER DESCRIBING TOPOGRAPHIC MAPS AND SYMBOLS IS AVAILABLE ON REQUEST



ROAD CLASSIFICATION
Heavy-duty... Light-duty...
Medium-duty... Unimproved dirt...
U. S. Route... State Route...

FEB 2 1984
University of Wisconsin-Madison

ELKTON, KY.
N3645-W8707.5/7.5

EDITION OF 1951
PHOTOREVISED 1982
DMA 3557 I SW-SERIES V853
ARTHUR H. ROBINSON MAP LIBRARY
University of Wisconsin-Madison