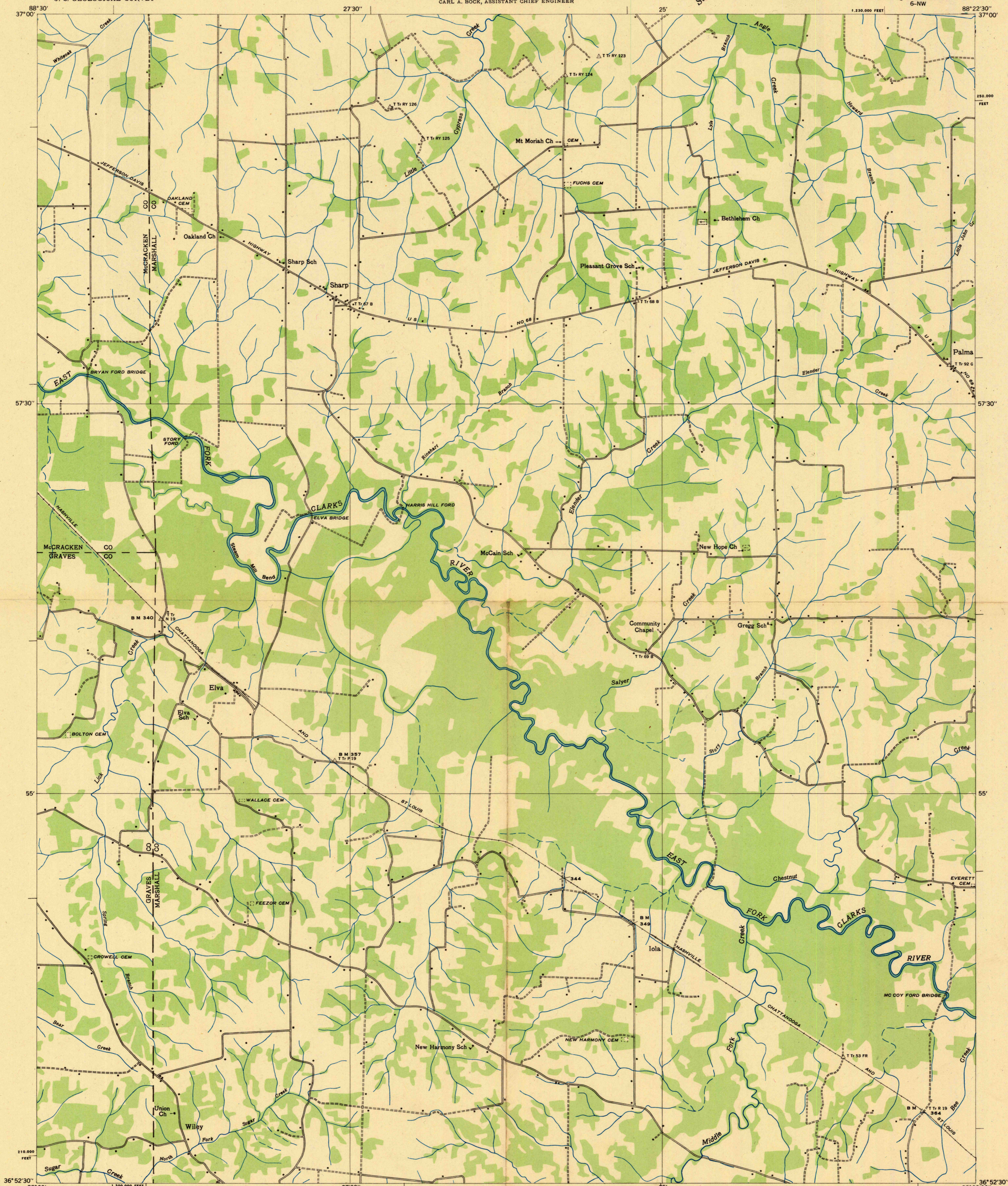
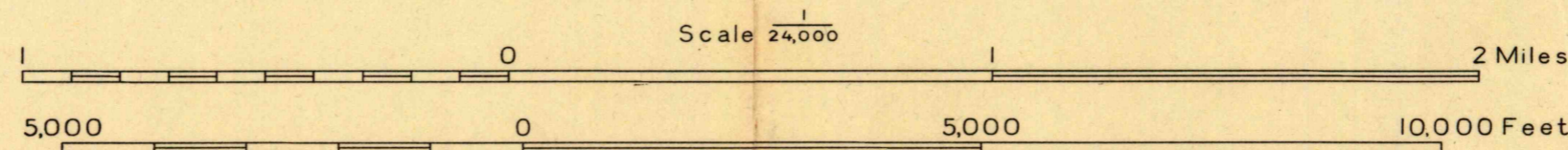


Advance sheet  
Subject to correction



Albert Pike, Division Engineer  
Compiled by U. S. Geological Survey from aerial photographs  
Control by U. S. Geological Survey, U. S. Coast and Geodetic Survey,  
Corps of Engineers, U. S. Army and Tennessee Valley Authority  
Field examination in 1936



Datum is mean sea level

Polyconic projection, 1927 North American datum  
10,000 foot grid based on Kentucky (South)  
rectangular coordinate system

USGS  
Historical File  
Topographic Division

APPROXIMATE MEAN  
DECLINATION, 1936

Probable drainage

ELVA, KY.  
6-NW