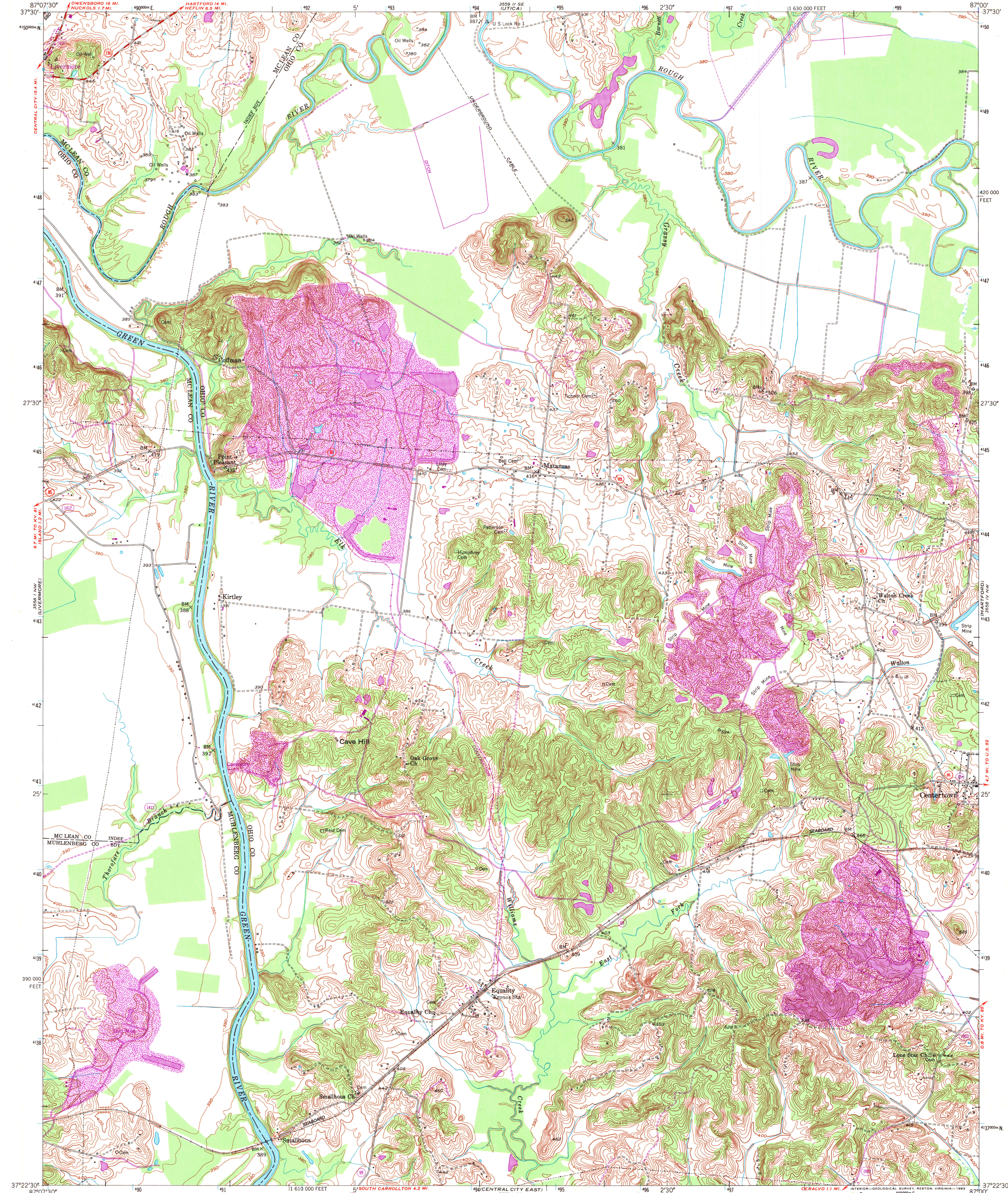


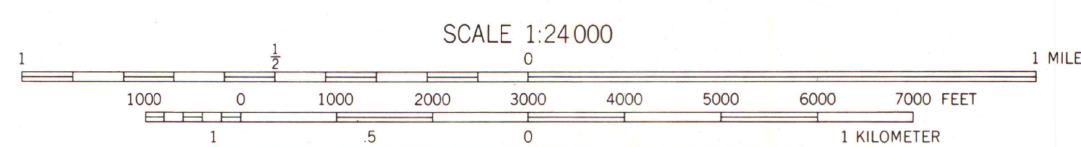
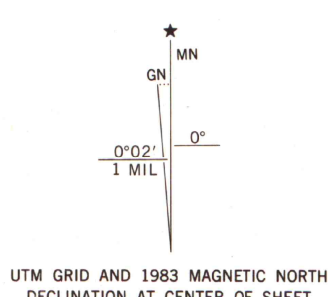
UNITED STATES
DEPARTMENT OF THE INTERIOR
GEOLOGICAL SURVEY

STATE OF KENTUCKY
AGRICULTURAL AND INDUSTRIAL DEVELOPMENT BOARD

EQUALITY QUADRANGLE
KENTUCKY
7.5 MINUTE SERIES (TOPOGRAPHIC)
NE/4 CENTRAL CITY 15' QUADRANGLE



Maped, edited, and published by the Geological Survey
Control by USGS, NOS/NOAA, and USCE
Culture and drainage in part compiled from aerial photographs
taken 1950. Topography by planetable surveys 1952
Polyconic projection. 10,000-foot grid ticks based on Kentucky
coordinate system, south zone. 1000-meter Universal Transverse
Mercator grid ticks, zone 16, shown in blue. 1927 North American
Datum. To place on the predicted North American Datum 1983 move
the projection lines 4 meters south and 1 meter east as shown by
dashed corner ticks
Revisions shown in purple and woodland compiled in cooperation
with State of Kentucky agencies from aerial photographs taken
1981 and other sources. Contours adjusted adjacent to certain
photorevised hydrographic features. This information not field
checked. Map edited 1983



CONTOUR INTERVAL 10 FEET
NATIONAL GEODETIC VERTICAL DATUM OF 1929

THIS MAP COMPLIES WITH NATIONAL MAP ACCURACY STANDARDS
FOR SALE BY U. S. GEOLOGICAL SURVEY, RESTON, VIRGINIA 22092,
KENTUCKY GEOLOGICAL SURVEY, LEXINGTON, KENTUCKY 40506,
AND KENTUCKY DEPARTMENT OF COMMERCE, FRANKFORT, KENTUCKY 40601
A FOLDER DESCRIBING TOPOGRAPHIC MAPS AND SYMBOLS IS AVAILABLE ON REQUEST



ROAD CLASSIFICATION
Heavy-duty 4 LANE 16 LANE Light-duty
Medium-duty 2 LANE 16 LANE Unimproved dirt
U. S. Route State Route

EQUALITY, KY.
NE/4 CENTRAL CITY 15' QUADRANGLE
37087-D1-TF-024

1952
PHOTOREVISED 1983
DMA 3558 I NE-SERIES V853

A.H. ROBINSON
MAP LIBRARY

AUG 28 1984

University of Wisconsin
Madison