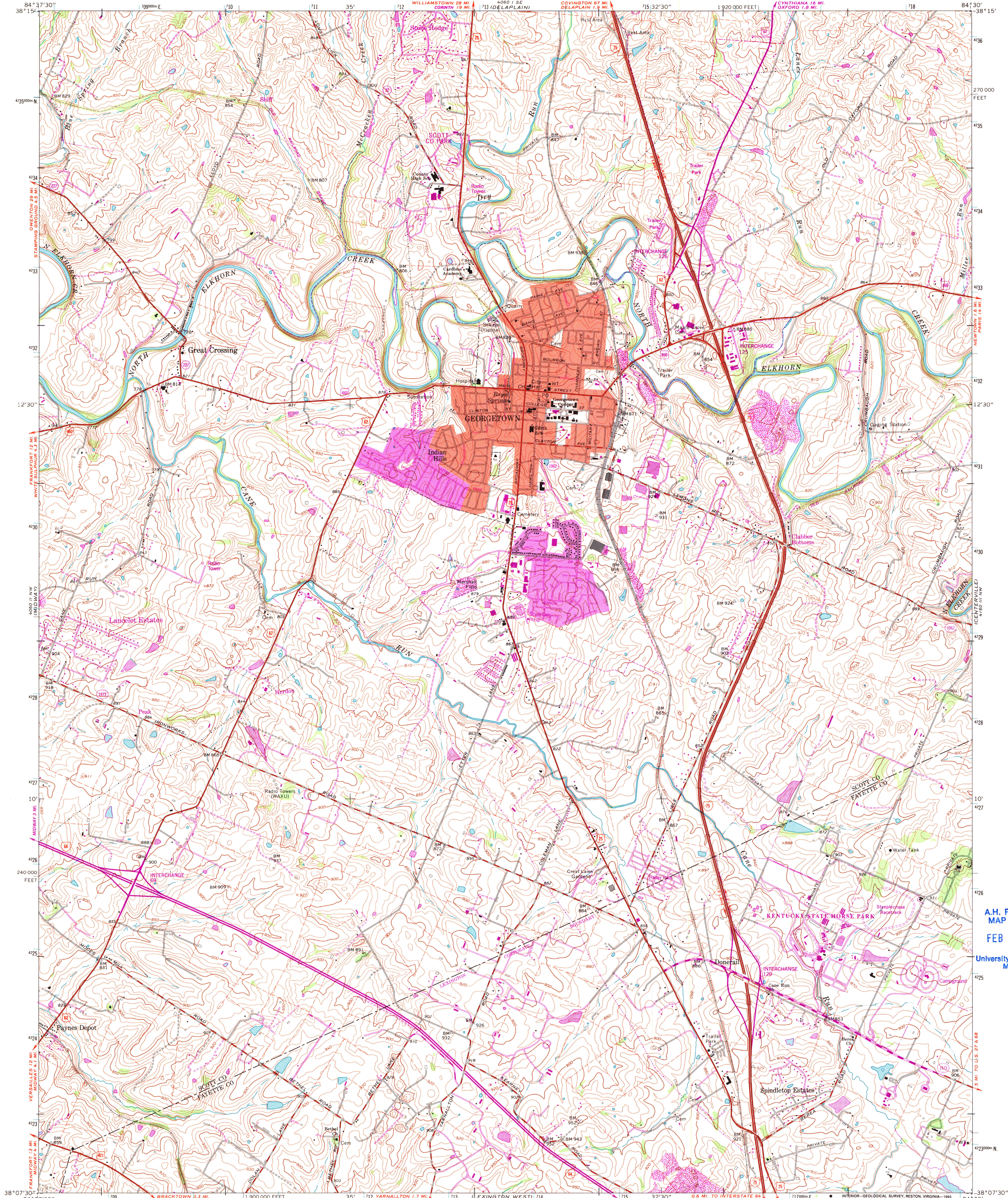


UNITED STATES
DEPARTMENT OF THE INTERIOR
GEOLOGICAL SURVEY

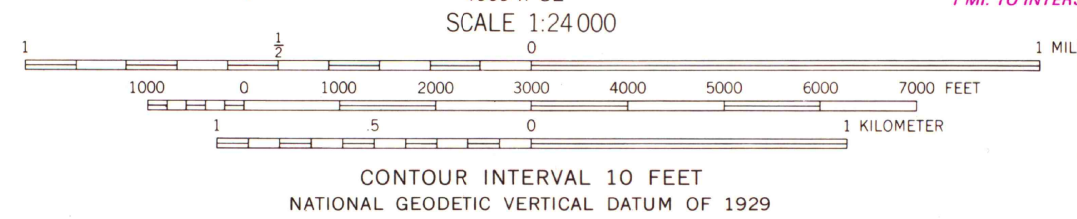
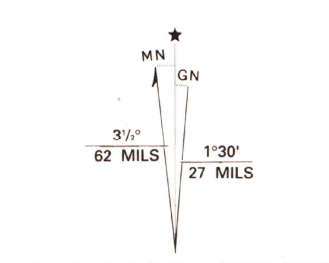
STATE OF KENTUCKY
KENTUCKY GEOLOGICAL SURVEY
UNIVERSITY OF KENTUCKY

GEORGETOWN QUADRANGLE
KENTUCKY
7.5 MINUTE SERIES (TOPOGRAPHIC)

NE 4 GEORGETOWN 15' QUADRANGLE
(LEXINGTON)



Produced by the United States Geological Survey
Control by USGS and NOS/NOAA
Topography by photogrammetric methods from aerial photographs taken 1952. Field checked 1954. Map revised 1965
Projection and 10,000-foot grid ticks: Kentucky coordinate system, north zone (Lambert conformal conic)
1000-meter Universal Transverse Mercator grid ticks, zone 16, shown in blue 1927 North American Datum (NAD 27)
North American Datum of 1983 (NAD 83) is shown by dashed corner ticks. The values of the shift between NAD 27 and NAD 83 for 7.5-minute intersections are given in USGS Bulletin 1875
There may be private inholdings within the boundaries of the National or State reservations shown on this map
Red tint indicates area in which only landmark buildings are shown



THIS MAP COMPLIES WITH NATIONAL MAP ACCURACY STANDARDS
FOR SALE BY U. S. GEOLOGICAL SURVEY, DENVER, COLORADO 80225 OR RESTON, VIRGINIA 22092.
KENTUCKY GEOLOGICAL SURVEY, LEXINGTON, KENTUCKY 40506,
AND KENTUCKY DEPARTMENT OF COMMERCE, FRANKFORT, KENTUCKY 40601
A FOLDER DESCRIBING TOPOGRAPHIC MAPS AND SYMBOLS IS AVAILABLE ON REQUEST

U.S. Regional
Depository Copy
DO NOT DISCARD



ROAD CLASSIFICATION
Heavy-duty ——— Light-duty ———
Medium-duty ——— Unimproved dirt ———
Interstate Route U.S. Route
State Route

GEORGETOWN, KY.
NE 4 GEORGETOWN 15' QUADRANGLE
38084-B5-TF-024

1965
REVISED 1993
DMA 4060 II NE—SERIES V853

Revisions shown in purple and woodland compiled in cooperation with State of Kentucky agencies from aerial photographs taken 1988 and other sources. Contours not revised. This information not field checked. Map edited 1993
Purple tint indicates extension of urban areas

A.H. ROBINSON
MAP LIBRARY
FEB 08 1994
University of Wisconsin
Madison