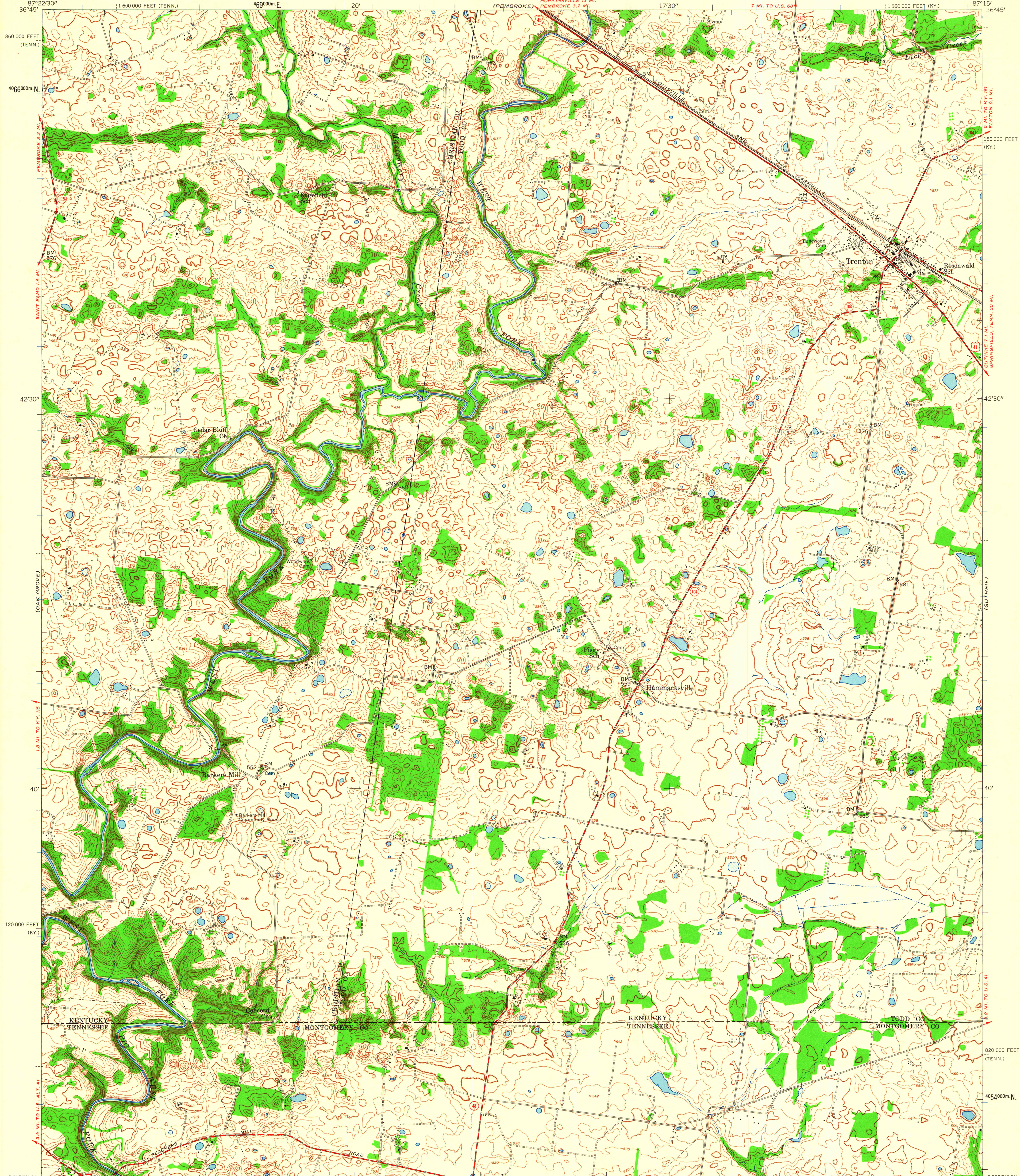


UNITED STATES
DEPARTMENT OF THE INTERIOR
GEOLOGICAL SURVEY

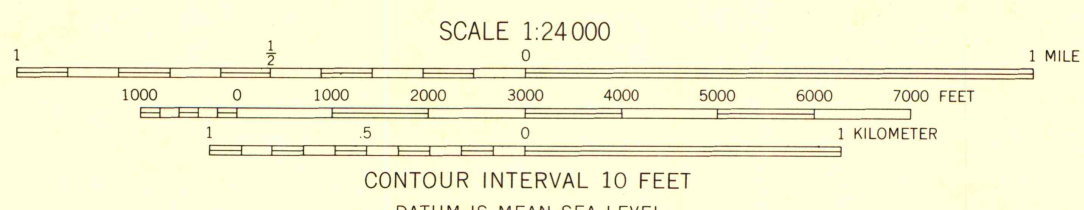
UNITED STATES
DEPARTMENT OF THE ARMY
CORPS OF ENGINEERS

HAMMACKSVILLE QUADRANGLE
KENTUCKY-TENNESSEE
7.5 MINUTE SERIES (TOPOGRAPHIC)
NE 1/4 CLARKSVILLE 15' QUADRANGLE



Mapped by the Army Map Service
Published for civil use by the Geological Survey
Control by USGS, USC&GS, and USCE
Topography by photogrammetric methods from aerial
photographs taken 1951. Planimetric detail revised from
aerial photographs taken 1956. Field check 1957
Polyconic projection. 1927 North American datum
10,000-foot grids based on Kentucky coordinate system,
south zone, and Tennessee coordinate system
1000-meter Universal Transverse Mercator grid ticks,
zone 16, shown in blue
Unchecked elevations are shown in brown

TRUE NORTH
MAGNETIC NORTH
APPROXIMATE MEAN
DECLINATION, 1957



THIS MAP COMPLIES WITH NATIONAL MAP ACCURACY STANDARDS
FOR SALE BY U. S. GEOLOGICAL SURVEY, WASHINGTON 25, D. C.,
KENTUCKY GEOLOGICAL SURVEY, LEXINGTON, KENTUCKY,
KENTUCKY DEPARTMENT OF ECONOMIC DEVELOPMENT, FRANKFORT, KENTUCKY,
AND TENNESSEE DIVISION OF GEOLOGY, NASHVILLE, TENN.
A FOLDER DESCRIBING TOPOGRAPHIC MAPS AND SYMBOLS IS AVAILABLE ON REQUEST



ROAD CLASSIFICATION
Heavy-duty ——— Light-duty ———
Medium-duty ——— Unimproved dirt ———
U. S. Route ——— State Route ———

HAMMACKSVILLE, KY. TENN.
NE 1/4 CLARKSVILLE 15' QUADRANGLE
N3637.5-W8715/7.5

1957

MAP AND AIR PHOTO LIBRARY
University of Wisconsin