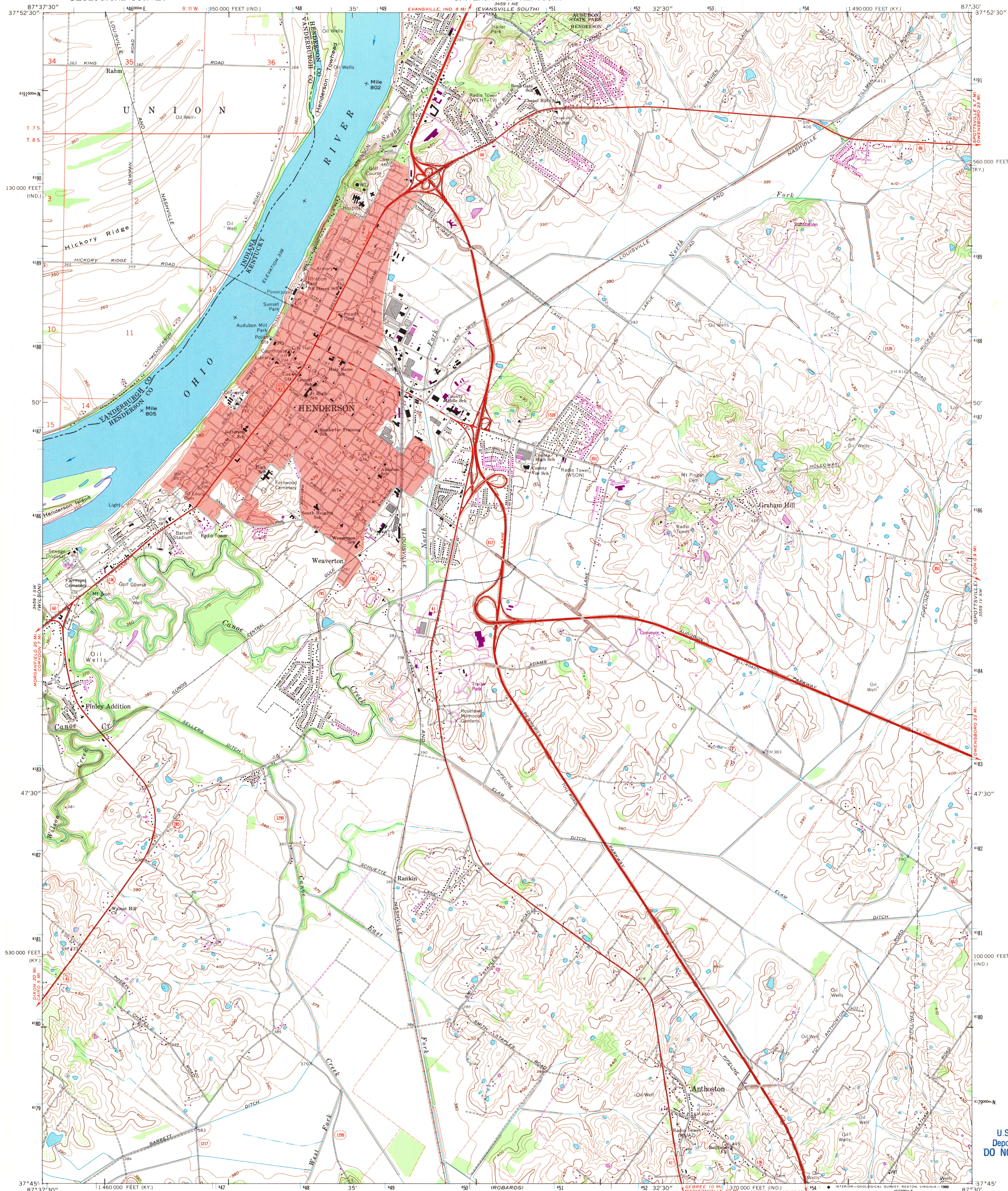


UNITED STATES
DEPARTMENT OF THE INTERIOR
GEOLOGICAL SURVEY

STATE OF KENTUCKY
KENTUCKY GEOLOGICAL SURVEY
UNIVERSITY OF KENTUCKY

HENDERSON QUADRANGLE
KENTUCKY-INDIANA
7.5 MINUTE SERIES (TOPOGRAPHIC)
SE/4 HENDERSON 15' QUADRANGLE



U.S. Regional
Depository Copy
DO NOT DISCARD

A.H. ROBINSON
MAP LIBRARY

OCT - 1 1989

University of Wisconsin
Madison

Mapped, edited, and published by the Geological Survey
Control by USGS, NOS/NOAA, and USCE
Planimetry by photogrammetric methods from aerial photographs
taken 1950. Topography by planimetric surveys 1952. Revised
from aerial photographs taken 1970. Field checked 1971
Polyconic projection
10,000-foot grids based on Kentucky coordinate system, south zone,
and Indiana coordinate system, west zone
1000-meter Universal Transverse Mercator grid ticks,
zone 16, shown in blue. 1927 North American Datum
To place on the predicted North American Datum 1983
move the projection lines 3 meters south and
2 meters east as shown by dashed corner ticks
Fine red dashed lines indicate selected fence and field lines where
generally visible on aerial photographs. This information is unchecked
The state boundary as shown represents the approximate position of
the low water line as determined from U. S. Corps of Engineers
Ohio River Charts, surveyed 1912-1913, and supplementary information

SCALE 1:24 000
CONTOUR INTERVAL 10 FEET
DOTTED LINES REPRESENT 5-FOOT CONTOURS
NATIONAL GEODETIC VERTICAL DATUM OF 1929
FOR SALE BY U. S. GEOLOGICAL SURVEY, DENVER, COLORADO 80225, OR RESTON, VIRGINIA 22092
KENTUCKY GEOLOGICAL SURVEY, LEXINGTON, KENTUCKY 40506
KENTUCKY DEPARTMENT OF COMMERCE, FRANKFORT, KENTUCKY 40601,
AND INDIANA DEPARTMENT OF NATURAL RESOURCES, INDIANAPOLIS, INDIANA 46204
A FOLDER DESCRIBING TOPOGRAPHIC MAPS AND SYMBOLS IS AVAILABLE ON REQUEST

Red tint indicates area in which only landmark buildings are shown
Revisions shown in purple compiled in cooperation with State of
Indiana agencies from aerial photographs taken 1977 and other
source data. Contours adjusted adjacent to certain photorevised
hydrographic features. This information not field checked
Map edited 1980

HENDERSON, KY.-IND.
SE/4 HENDERSON 15' QUADRANGLE
37087-G5-TF-024

1971
PHOTOREVISED 1980
DMA 3459 I SE-SERIES V853