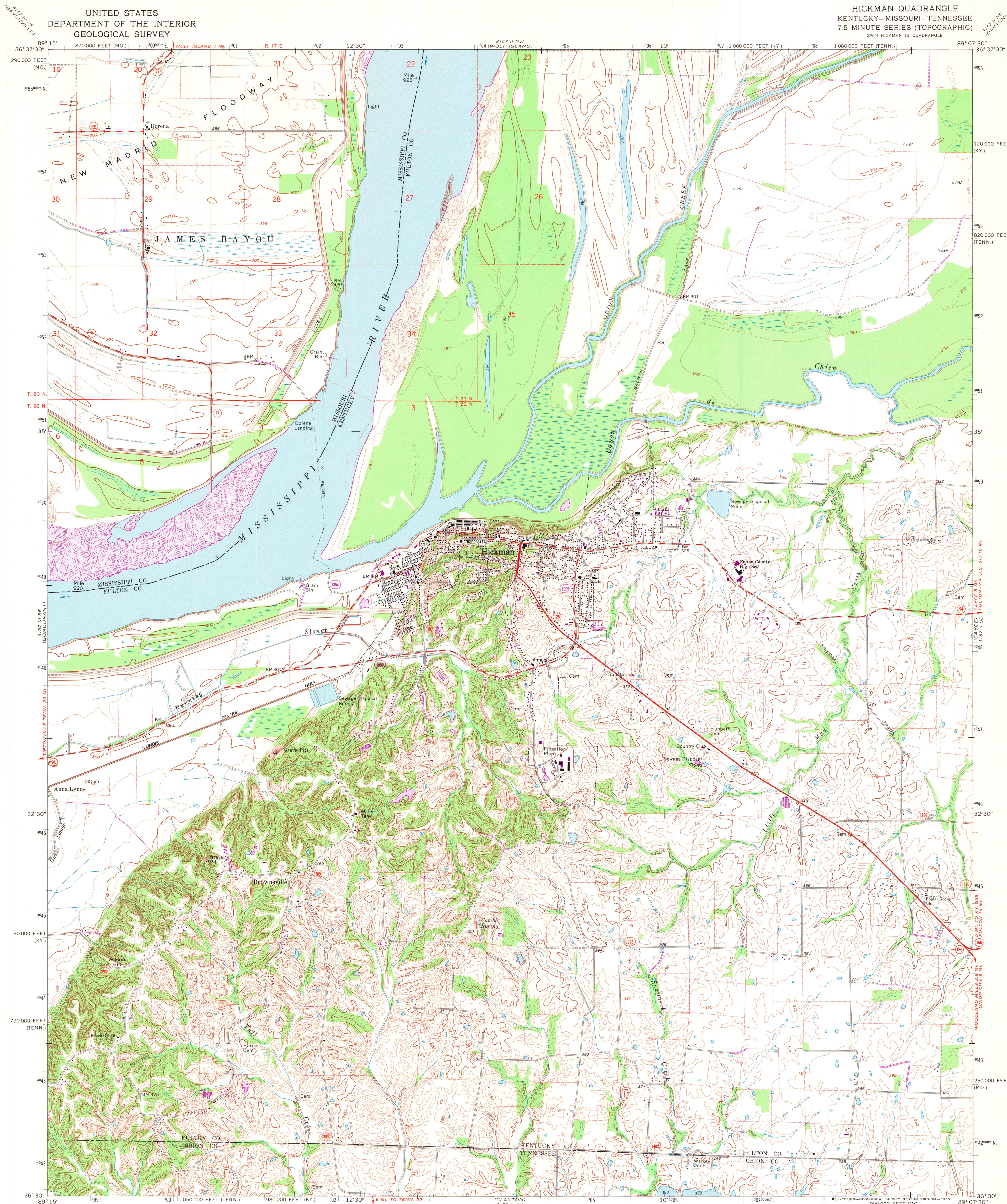


UNITED STATES
DEPARTMENT OF THE INTERIOR
GEOLOGICAL SURVEY

HICKMAN QUADRANGLE
KENTUCKY—MISSOURI—TENNESSEE
7.5 MINUTE SERIES (TOPOGRAPHIC)
SW 4 HICKMAN 15' QUADRANGLE



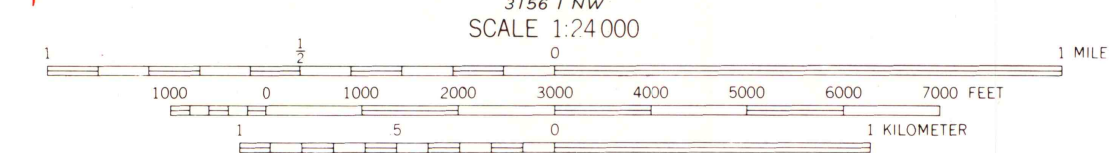
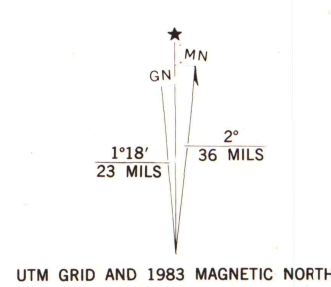
Mapped, edited, and published by the Geological Survey
in cooperation with the State of Kentucky

Control by USGS and NOS/NOAA

Planimetry by photogrammetric methods from aerial photographs
taken 1950. Topography by planimetric surveys 1951 and
Corps of Engineers surveys 1939. Revised from
aerial photographs taken 1969. Field checked 1970

Polyconic projection. 10,000-foot grid ticks based on Kentucky
coordinate system, south zone, Missouri coordinate system,
east zone, and Tennessee coordinate system. 1000-meter
Universal Transverse Mercator grid ticks, zone 16,
shown in blue. 1927 North American Datum. To place on
the predicted North American Datum 1983 move the projection lines
5 meters south and 6 meters east as shown by dashed
corner ticks

Fine red dashed lines indicate selected fence and field lines where
generally visible on aerial photographs. This information is unchecked



CONTOUR INTERVAL 10 FEET
DOTTED LINES REPRESENT 5-FOOT CONTOURS
NATIONAL GEODETIC VERTICAL DATUM OF 1929

THIS MAP COMPLIES WITH NATIONAL MAP ACCURACY STANDARDS
FOR SALE BY U. S. GEOLOGICAL SURVEY, DENVER, COLORADO 80225, OR RESTON, VIRGINIA 22092,
DIVISION OF GEOLOGY AND LAND SURVEY
MISSOURI DEPARTMENT OF NATURAL RESOURCES, ROLLA, MISSOURI 65401,
KENTUCKY GEOLOGICAL SURVEY, LEXINGTON, KENTUCKY 40506,
KENTUCKY DEPARTMENT OF COMMERCE, FRANKFORT, KENTUCKY 40601,
AND TENNESSEE DEPARTMENT OF CONSERVATION, DIVISION OF GEOLOGY, NASHVILLE, TENN. 37219
A FOLDER DESCRIBING TOPOGRAPHIC MAPS AND SYMBOLS IS AVAILABLE ON REQUEST

Revisions shown in purple and woodland compiled in cooperation
with State of Kentucky agencies from aerial photographs taken
1961 and other sources. Contours adjusted adjacent to certain
photorevised hydrographic features. This information not field
checked. Map edited 1983

ROAD CLASSIFICATION

Primary highway, all weather, hard surface
Secondary highway, all weather, hard surface
Light-duty road, all weather, improved surface
Unimproved road, fair or dry weather

State Route

HICKMAN, KY.—MO.—TENN. A.H. ROBINSON
MAP LIBRARY
N 3630—W 8907.5/7.5
DEC 16 1983

1970
PHOTOREVISED 1983
DMA 3157 II SW—SERIES Y853
ARTHUR H. ROBINSON MAP LIBRARY
University of Wisconsin-Madison
University of Wisconsin-Madison