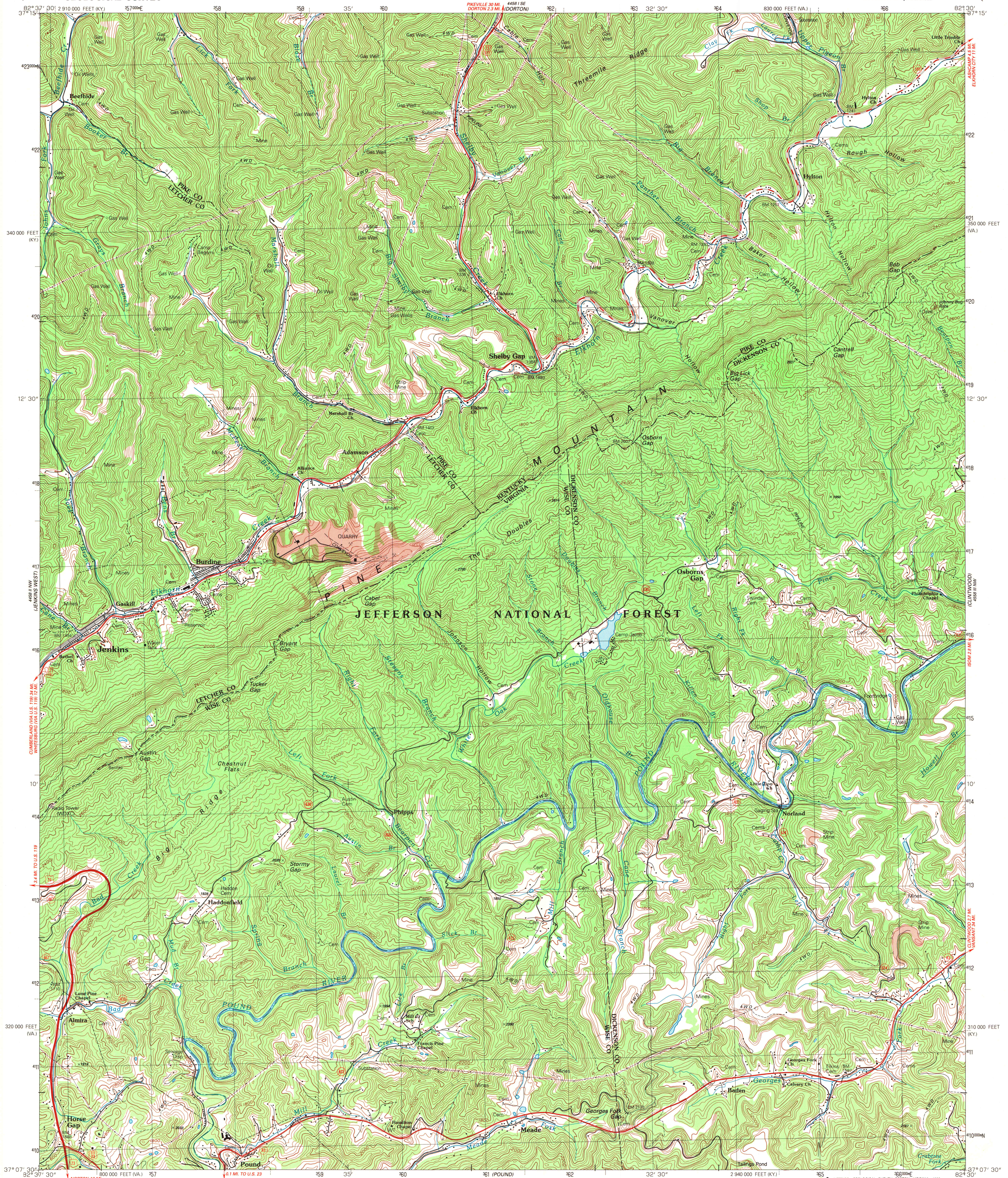
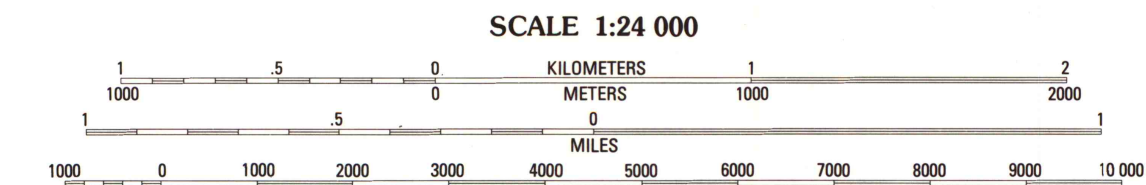
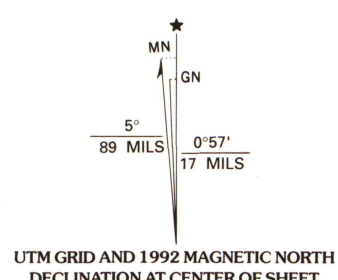


UNITED STATES  
DEPARTMENT OF THE INTERIOR  
GEOLOGICAL SURVEY

JENKINS EAST QUADRANGLE  
KENTUCKY-VIRGINIA  
7.5 MINUTE SERIES (TOPOGRAPHIC)  
NE 4 POUND 15' QUADRANGLE

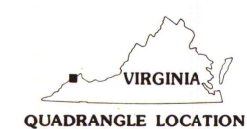


Produced by the United States Geological Survey  
in cooperation with Commonwealth of Virginia agencies  
Control by USGS and NOS/NOAA  
Topography by photogrammetric methods from aerial photographs  
taken 1960. Field checked 1963. Revised from aerial photographs  
taken 1988. Field checked 1991. Map edited 1992  
Projection: Virginia coordinate system, south zone  
(Lambert conformal conic)  
10,000-foot grid ticks: Virginia coordinate  
system and Kentucky coordinate system, south zone  
1000-meter Universal Transverse Mercator grid, zone 17  
1927 North American Datum  
The difference between 1927 North American Datum and North  
American Datum of 1983 (NAD 83) for 7.5-minute intersections  
is given in USGS Bulletin 1875. The NAD 83 is shown by  
dashed corner ticks  
There may be private inholdings within the boundaries of  
the National or State reservations shown on this map



THIS MAP COMPLIES WITH NATIONAL MAP ACCURACY STANDARDS  
FOR SALE BY U.S. GEOLOGICAL SURVEY, DENVER, COLORADO 80225, OR RESTON, VIRGINIA 22092  
VIRGINIA DIVISION OF MINERAL RESOURCES, CHARLOTTESVILLE, VIRGINIA 22903  
KENTUCKY GEOLOGICAL SURVEY, LEXINGTON, KENTUCKY 40506  
AND KENTUCKY DEPARTMENT OF COMMERCE, FRANKFORT, KENTUCKY 40601  
A FOLDER DESCRIBING TOPOGRAPHIC MAPS AND SYMBOLS IS AVAILABLE ON REQUEST

ROAD CLASSIFICATION  
Primary highway, hard surface ..... Light-duty road, hard or improved surface .....  
Secondary highway, hard surface ..... Unimproved road .....  
Interstate Route U.S. Route State Route



U.S. Depository Copy  
DO NOT DISCARD

A.H. ROBINSON  
MAP LIBRARY  
DEC 21 1992  
University of Wisconsin  
Madison

JENKINS EAST, KY.-VA.  
NE 4 POUND 15' QUADRANGLE  
37082-B5-TF-024

1992

DMA 4458 II NE-SERIES V834