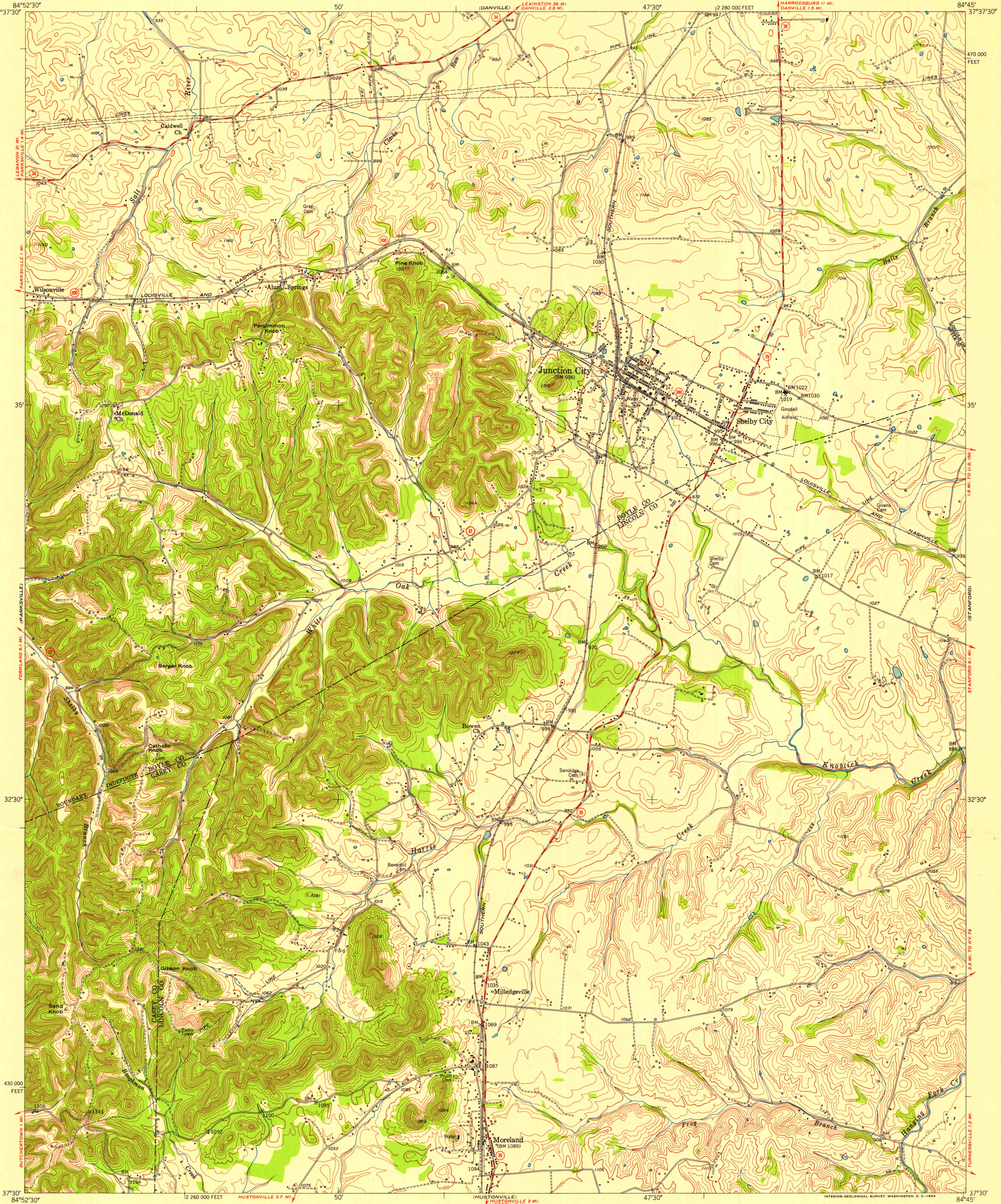


M10

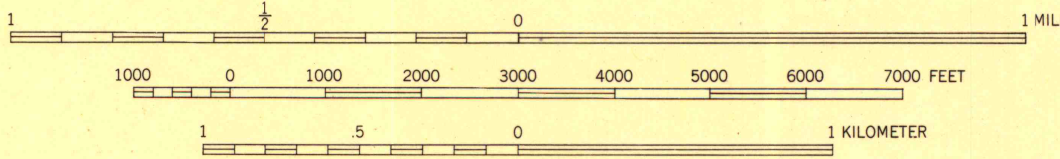
UNITED STATES
DEPARTMENT OF THE INTERIOR
GEOLOGICAL SURVEY

STATE OF KENTUCKY
AGRICULTURAL AND INDUSTRIAL DEVELOPMENT BOARD

JUNCTION CITY QUADRANGLE
KENTUCKY
7.5 MINUTE SERIES (TOPOGRAPHIC)
SE 1/4 DANVILLE 15' QUADRANGLE



Mapped, edited, and published by the Geological Survey
Control by USGS and USC&GS
Topography from aerial photographs by multiplex methods
Aerial photographs taken 1950. Field check 1952
Polyconic projection. 1927 North American datum
10,000-foot grid based on Kentucky coordinate system,
south zone



CONTOUR INTERVAL 20 FEET
DATUM IS MEAN SEA LEVEL

ROAD CLASSIFICATION
Heavy-duty 4 LANE 16 LANE Light-duty
Medium-duty 4 LANE 16 LANE Unimproved dirt
U. S. Route State Route

JUNCTION CITY, KY.
SE 1/4 DANVILLE 15' QUADRANGLE
N3730-W8445/7.5

1952 UNIVERSITY OF WISCONSIN
Department of Geography

THIS MAP COMPLIES WITH NATIONAL MAP ACCURACY STANDARDS
FOR SALE BY U.S. GEOLOGICAL SURVEY, WASHINGTON 25, D.C.
AND KENTUCKY AGRICULTURAL AND INDUSTRIAL DEVELOPMENT BOARD, FRANKFORT, KENTUCKY
A FOLDER DESCRIBING TOPOGRAPHIC MAPS AND SYMBOLS IS AVAILABLE ON REQUEST